

Holstein Journal

AUSTRALIA

SPRING 2022



**Winter Fair
roundup**

**August ABV
release**

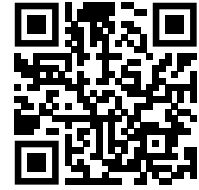
**Cow Family
– Cupids**

LEAD INNOVATE DELIVER

Australia's Choice

Out Now!

Australian Dairy Sire
Spring Update:



Fast Forward your Genetic Progress™



TPI 2986	NM\$ 891	TYPE 1.56	UDDER 1.64
--------------------	--------------------	---------------------	----------------------

MECCA P

MONUMENT P x Hurricane x SILVER



USDA 08/22 81% Rel		Daughters: G Herds: G	
TPI	2986	SCC	2.75 76%
NM\$	891	PL	+3.3 75%
Milk	1018	CE	2.2 63%
Fat	118 0.27	DPR	-0.5 76%
Protein	54 0.08	GL	-1.5 75%

US 08/22 78% Rel		Daughters: G Herds: G	
Type	1.56	Rump Angle	0.45
Udder	1.64	Thurl Width	0.93
Feet & Legs	0.38	Legs - Side View	-0.95
Stature	1.22	Legs - Rear View	0.69
Strength	0.86	Foot Angle	1.29
Body Depth	0.71	Feet and Legs	0.57
Angularity	0.85	Fore Udder Att.	1.63
		Rear Udder Att. (H)	2.32
		Rear Udder Att. (W)	2.19
		Udder Cleft	1.42
		Udder Depth	1.34
		Front Teat Pl.	0.57
		Rear Teat Pl.	1.04
		Teat Length	-0.06

DAM: Boghill Glamour Hurricane Carlin D VG-89

Its official! Sexcel® was the Number One selling sexed semen in Australia last year.

Sexcel has a big role to play in creating a more profitable and sustainable future, by offering the ability to breed your heifer replacements from the best cows in your herd.



1800 **ABS BULL** (1800 227 285)

www.absglobal.com/au





C o n t e n t s



8 Power of Women winner



16 In the ring at the Winter Fair



21 Malanda Show winners

CEO’s Message: Looking to the future 5

Online youth expo returns 6

Welcome Amanda Glossop..... 6

POW scholarship winner heads to World Dairy Expo..... 8

Semex On-farm Competition is back! 8

Seeing Red at IDW 9

Cow of the Year finalists..... 10-11

Youth members bound for Belgium 12

Master Breeder: Yelverdale 13

Virtual Spectacular 14

Winter Fair 16-20

Malanda Show 21-22

Cow Family: Fantasia Cupids 24

All-Australian back in business 29-38

Master Breeder: Rockwella 40

August ABV release 41-50

Sustainability Index will help cut emissions with genetics .. 41

Classification Tour Results 6/5/2022 to 18/8/2022 51

Bevandale’s record-breaking Excellence 54

The Australian Holstein Journal is the official publication of Holstein Australia Inc. Content is copyright and reproduction without permission of the publisher is forbidden. Opinions and views expressed or implied are not necessarily those of Holstein Australia or the publishers and responsibility for the validity or accuracy of any statement, and content of any advertisement, lies solely with the author or advertiser.

Re. No: A14883U ABN: 87 455 118 302

Holstein Australia Office: Ph: 03 9835 7600

www.holstein.com.au

Holstein Australia
AgriBio, 5 Ring Road, Bundoora Victoria 3081

Produced by Monks Communication on behalf of Holstein Australia
Editor: Lee-Ann Monks
Layout: SUBStitution Pty Ltd
Advertising: Amanda Glossop 0409 926 429
Printed by Litho Art, Darra, Qld

COVER: The current generation behind Master Breeder herd, Yelverdale: Andrew and Claire Jenkins and their children, Denver, Wesley Bonnie, Riley. *Photograph: Dairy Australia*



HIGH **HHP\$**TM SIRE THAT FITS YOUR BREEDING GOALS

PARFECT



7HO15085 SIEMERS RENG D PERFECT-ET
18 TP 1C 1V 1V 1L 1D 1H 1T 1H 2T 1H 3T 1H 4T 1H 5T 1H 6T
RENEGADE X DELTA-LAMBDA X DENVER

EXTREMELY HIGH DEMAND SIRE WITH A PROVEN SIRE STACK

TYPE: +2.49 PTAT | **UDDERS:** +2.34 UDC | **HHP\$:** +1018
SUPERIOR PRODUCTION & COMPONENTS: +1164 PTAM WITH +155 COMBINED FAT AND PROTEIN
ADDS TEAT LENGTH: +0.63 TL
GREAT STRENGTH AND FEET & LEGS: +1.45 STR | +1.80 FLC

HIS EARLY SONS ARE IMPRESSIVE!

CODE	NAME	A2A2	TPI*	PTAT	UDC	DPR	PTAM	HHP\$ TM
7HO15769 	HECKER	A2A2	3084	+1.67	+2.06	+0.3	+749	1106
7HO15790 	ISON-P	A2A2 BB	2922	+1.98	+1.58	+1.6	+789	1037
7HO15793 	PEARCE	A2A2 BB	3034	+2.15	+2.13	+1.0	+1484	1000
250HO15939 	PRIVATEER	A2A2 BB	3013	+1.74	+2.01	+1.4	+520	1064



ABOVE: SIEMERS RENG D PERFECT-ET
LEFT: **PARFECT** DAM
SIEMERS LMDA PARIS 27856-ET EX-91



WORLD WIDE SIRES

Phone (03) 5831 5559 • info@wwsaustralia.com
wwwsaustralia.com

HERE FOR YOU.

designations based on 04/22 proofs

*GForce, *gender SELECTED and *Mastitis ResistantPRO are trademarks of Select Sires Inc. *RobotPRO is a registered trademark of Select Sires Inc. Ultraplus™ is a trademark of STGen LLC. All gender SELECTED semen is processed using Ultraplus™ technology. 08/22 CDCB, IB-WACE and HA data. 7HO15085 Rel. Production 82%, Rel. Type 81%. 7HO15769 Rel. DPR 73%, Rel. Production 88%, Rel. Type 78%. 7HO15790 Rel. DPR 73%, Rel. Production 79%, Rel. Type 78%. 7HO15793 Rel. DPR 74%, Rel. Production 80%, Rel. Type 79%. 250HO15939 Rel. DPR 74%, Rel. Production 79%, Rel. Type 78%.

Product of the USA



CEO's Message

Rohan Butler
CEO, Holstein Australia



Looking to the future

With another calving season well under way, the Holstein community is in the midst of one of its busiest times of the year.

This year in particular many members are hanging on for summer or, if not summer, certainly less rain. Parts of New South Wales and Queensland have had the wettest January to June in 164 years of records. More recently Gippsland, Victoria's dairy heartland, has experienced flooding. From fires to floods, it feels like we have had everything thrown at us over the last few years. The longer-range forecast is starting to look more promising. Hopefully, as we head towards Christmas the impact of the last few months will recede and members affected by flood will have a strong end to the year.

Holstein Highlights 2022

I'm looking forward seeing as many members as possible at Holstein Highlights, our revamped National Awards Dinner, in Ballarat, Victoria, on 14 September.

You could almost say it's been three years in the making! This will be our first in-person AGM and Awards Dinner since 2019 and is being hosted by Western District Sub-branch, which has put a great program together.

After the last couple of years, a few days off farm with like-minded people celebrating all that is good and great about the Holstein community will be pretty special.

Future proofing the Association

At this year's AGM members are being asked to vote on special resolutions that the Board believes will help Holstein Australia to be more responsive to member needs and enable it to better meet the objective of ensuring "the integrity and continual development of the Holstein breed".

The proposed changes would see a new committee structure with the current Finance and Audit & Risk committees remaining. The Breed Development and Conformation Committee (BDCC) would be split into two: Classification & Awards and Genetic Improvement.

While the Strategic Directions Committee (SDC) played a vital role during the drafting of our five-year business plan, it has since had minimal work to do. This has led to the recommendation to establish a more focused and resourced committee, the Member Engagement Committee, which will focus on engaging the wider membership through the Sub-branch network and Youth.

The BDCC plays a vital role providing guidance to the Board on a wide range of matters and it was felt that the breadth of subject matter would be better dealt with across two committees. The new structure will allow more members to participate on committees that have more specific areas of focus. This, coupled with increased use of online meeting technologies such as Zoom, will significantly decrease the amount of time individuals need to commit in order to be on a committee.

Show time!

It was great to see a strong showing at the Victorian Winter Fair a couple of months back. It was certainly a busy event for HA and gave us the opportunity to catch up with many Victorian members for the first time in a while.

Our regional shows, and the important social side of these events, was hit particularly hard over the first two years of COVID but are now back and gathering momentum.

The sense of connection with each other is I think really important for farming

families, and we seem to have a new appreciation for this. It is an essential part of the dairy industry, and very much part of the way we do business.

With the NSW State Show and WA's Farmwest Discovery Day back, amongst other events, it has been great to see people in person again, and I'm looking forward to getting to South Australia and Tassie later in the year.

International markets

With China constantly in the news, despite fears around live exports to our biggest trading partner, the market remains very strong with the demand for dairy and Australian genetics continuing to grow.

For the first time in a few years Holstein Australia will be represented at next month's World Dairy Expo, with a key task being meeting with international visitors to the event and showcasing Australian Holstein genetics.

Young Breeders School Team

As I write this, Australia's Young Breeders School team is getting ready to fly off to Belgium to compete against teams from around the world. If you haven't caught up with how they are doing, check out the new Australian Dairy Youth Facebook page for all their news.

HA staff update

Last month Holstein Australia welcomed Amanda Glossop to the team, who has joined as Communications and Marketing Coordinator following Sarah Keen's departure. Amanda has made a great start and will have been on the phone to many of you by now.

I look forward to celebrating the many member achievements and successes with you at Holstein Highlights. **HJ**

Online youth expo returns

The online all breeds dairy youth show is retuning for a second year. Open to all dairy breeds, the event allows for young breeders to showcase their favourite animals without taking them to the show ring.

The 2022 STgenetics Australian Dairy Youth Expo will be judged in mid-October by Lisa McKay (Linsand Farms), whose judging experience spans every state in Australia, including all Royal Shows and the Sheri Martin Memorial Youth Showmanship competition at International Dairy Week in 2019.

Showing has been a huge part of Lisa's life for many years. She has owned and exhibited three IDW Supreme Champions and various All-Australian winners. Included in this is the famous cow Fairvale Morty Lady 51 EX97-5E.

Pete Semmens said STGenetics Australia was excited to hold the Virtual All Breeds Youth Expo, 2022. "This expo allows us to recognise the youth of today. The enthusiasm and volume of entries has been exceptional and is a strong sign of the positive direction the industry is heading," he said.

There's ample opportunity for the next generation to parade their favourite heifers with 10 classes across Junior Handler (4-14 years) and Senior Handler (15-25 years) age groups.

How to enter

Submit a 15-30 second video with just one heifer being led. Enter all your favourite animals – one animal per video but enter as many classes as you like.

Email video entries and entry forms to callcentreaus@stgen.com Closing date 10 October. Entry forms are available via QR code at right.



Everyone who enters a video in the competition will receive an Australian Dairy Youth t-shirt and hat.

More information: your STgenetics Australia Area Manager or phone 1800 793 465.



An image from Britney Gavenlock's 2021 entry which won the Holstein Australia Youth Encouragement Award.

Welcome Amanda

Amanda Glossop has joined the Holstein Australia team as Communications and Marketing Coordinator, commencing in late July. She grew up surrounded by dairying – her parents Bob and Di Glossop bred under the Harmony Holsteins prefix – and has a passion for stud Holsteins.



Amanda lists winning Junior Champion Heifer and Junior Champion Handler at the

IDW All Breeds Youth Show in 2000 as one of her greatest memories.

When drought hit hard in the mid-2000s, the family herd was dispersed and Amanda pursued a career in sport management, working in community-based sports administration roles at Football Victoria, Melbourne Victory Football Club and Western Bulldogs AFL club for seven years.

Amanda feels life is completing a full circle in joining the Holstein Australia team as it allows her to combine her skills and experience with a lifelong passion for Holsteins. Her role covers all things marketing and communications

– including working closely with sub-branches and members.

She is also leading the relaunch of children's book *Holly the Holstein* under the management of Holstein Australia and taking an active role in youth development initiatives.

Holstein Australia CEO Rohan Butler welcomed Amanda. "Not only does she have the technical skills for the role, but as soon as you speak with her, you appreciate her passion for and knowledge of Australia Holsteins. I'm really looking forward to seeing her develop in the role and I know she can't wait to get out and about to meet more members in person."

DJ HANO

Siemers Dj HANO

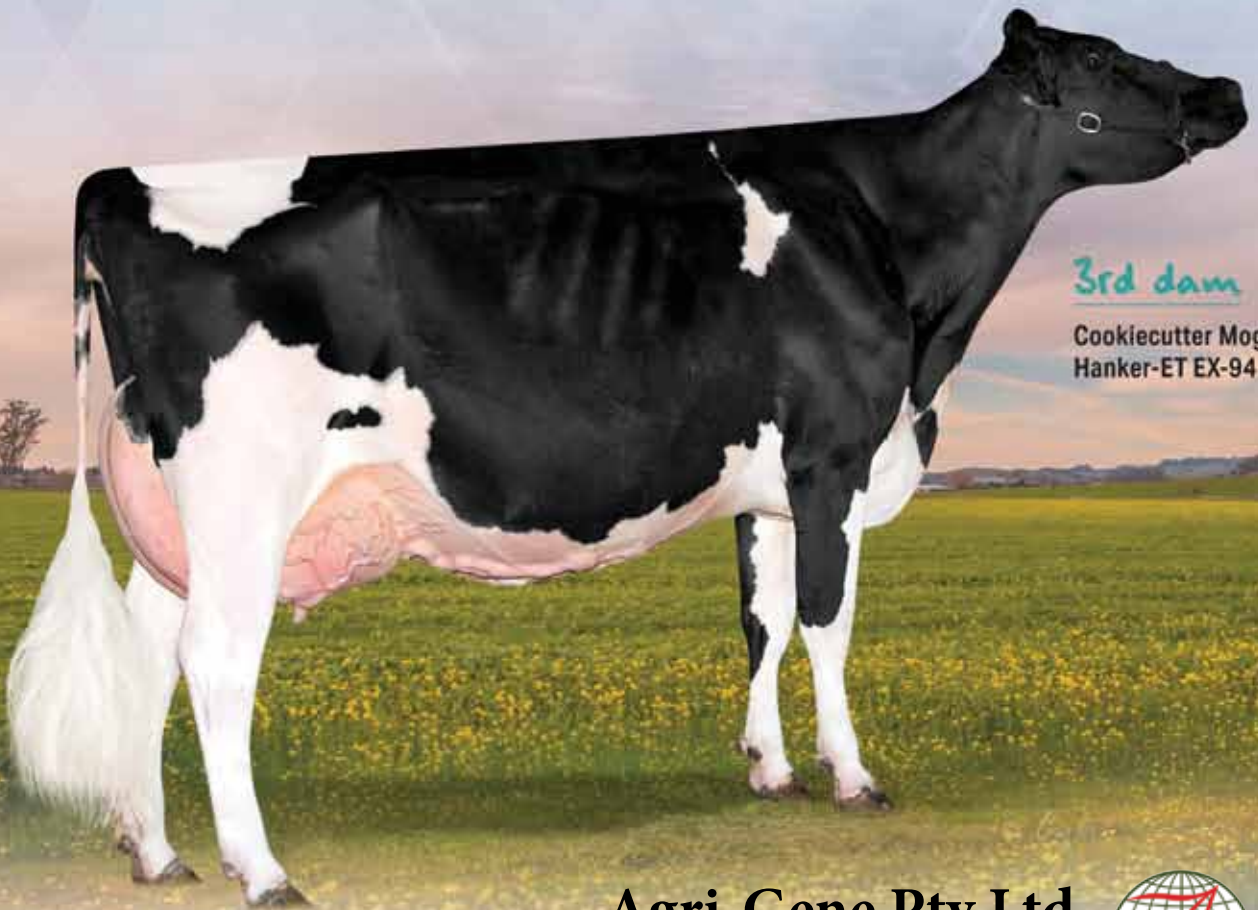
Discjockey ✕ Doc ✕ Monterey

- The Breeders Dream Sire
- Combines Fertility, Production & Type
- **+1.71** Strength
- **+1.82** Body Depth
- 11 Generations of VG or EX dams
- AVAILABLE in SEXED and Conventional



ABV AUGUST 2022

BPI + 377 | TPI +2748 | Milk +518 | Fat 44lbs 0.8% | Prot 41lbs 0.9% | Type +2.68 | Udders +2.59 | DPR +1.9



3rd dam

Cookiecutter Mog
Hanker-ET EX-94

Agri-Gene Pty Ltd

123-125 Tone Road, Wangaratta Victoria 3677



Ph: 03 5722 2666 Fax: 03 5722 2777 Email: info@agrigen.com.au www.agrigen.com.au



POW scholarship winner heads to World Dairy Expo

The dream of a trip to the World Dairy Expo in Wisconsin became a reality for Penny Welch when she won the 2022 Power of Women in Dairying World Dairy Expo scholarship.

Penny said it was “a surreal moment” when Jade Sieben introduced her as the winner at the Power of Women Afternoon Tea during the Victorian Winter Fair in late June.

The Power of Women in Dairying provides a networking opportunity for women in dairy and doubles as a platform to fundraise toward scholarship opportunities for up-and-coming females in the industry.

This is the second time the scholarship has been awarded, with Penny following in the footsteps of Clare Modra of Avalon Holsteins, who travelled to the World Dairy Expo in 2017.

Penny was one of 11 outstanding women who applied for this year’s scholarship, reflecting the depth of female talent currently working in dairying in Australia.

A familiar face throughout the dairying community, city-turned-country girl, Penny worked on a dairy farm from the age of 16, before joining Total Livestock Genetics, where she has been involved

with the live exports of milking cows, bull collection and her current role as genetic export coordinator.

Penny said that without this opportunity, it simply wouldn’t have been possible for her to travel to this prestigious event.

She hopes to not only see some of the best cows in the world but also experience the difference in how AI centres are run and to learn more about the smaller, more intense, barn-based operations in America.

“It is an honour to represent the field of women in dairying – I feel like we have always been here, but now there is a large acceleration forward allowing us to showcase what we can do within the industry,” Penny said.

She is especially passionate about educating women and girls on the vast range of industry opportunities for females and that you don’t have to be a dairy farmer to make your mark on the industry.

Holstein Australia is a proud sponsor of the Power of Women in Dairying movement and we look forward to following Penny’s journey to the World Dairy Expo which is being held from 2 to 7 October at the Alliant Energy Centre in Madison, Wisconsin, US.

HJ



Clare Dee, 2022 POW Scholarship winner Penny Welch, Jade Sieben and Stacey Leppert.

Semex On-farm Competition is back!

Say it quietly...the Semex-Holstein Australia On-farm Competition is back to celebrate its 21st year in style.

The full competition has returned and is getting under way now. This follows the COVID-necessitated cancellation of the competition in 2020 and running it at a local level only during the lockdowns and border closures of 2021.

Holstein Australia CEO Rohan Butler welcomed the return of the competition. “There’s certainly some excitement around this year’s competition,” he said.

“For many sub-branches the On-farm is one of the key social and member activities. As we’ve all discovered this year, bringing people together on-farm, at local presentations and events and at a regional level is really important.”

This year there will be a change of venue for Victoria’s presentation luncheon, with the event moving to Tabcorp Park in Melton.

The entry period for this year’s competition runs from late August to Wednesday

19 October. Sub-branch competitions must be completed by this date and all results sent to Semex.

Overjudging runs from Sunday 30 October to Monday 7 November, with Victoria’s presentation lunch taking place on Wednesday 23 November at Tabcorp Park.

“We’re looking forward to seeing the on-farm back to full strength,” Rohan Butler said. “It should be a bumper year for the competition and a happy 21st!”

Seeing Red at IDW

International Dairy Week (IDW) 2023 will offer a standalone National Red and White Holstein show for the first time. It will be judged by Callum McKinven of Lookout Farms in Quebec, Canada, one of the most highly regarded judges in the world, having judged in 31 countries.

IDW organisers Declan Patten and Brad Cullen created the class in recognition of the significant growth in the depth and quality of Red and White Holsteins over the years.

Declan said he was a huge supporter of the Red and White Holstein breed. "I have seen them continue to improve and develop as a breed so I'm excited to have them in a standalone show."

While traditionally, Black and White and Red and White Holsteins have been shown together, with a specific Reds sub-section

2023 IDW Judges

Holstein: Warren Ferguson, Ferdon Genetics New Zealand

Brown Swiss: Callum McKinven

Jersey: Kelli Cull, Budjon Farms, Wisconsin

Illawarra: Brad Gavenlock, Cherrylock Cattle Co. Tallygaroopna, Victoria,

International Dairy Week returns for its 33rd year at Tatura Park, between 14 and 19 January 2023.

of the class, the stand alone show provides an opportunity for exhibitors to enter cows they may previously have chosen to leave at home.

"People with Red and Whites can be a little intimidated to bring them out with the Black and Whites, so some of

these Red and Whites, who are exceptional cows and heifers, are left at home," said McKinven.

Exhibitors are already expressing support for the National Red and White Show, including Judson Jennings of Rusty Red Holsteins, who has been passionate about Red and Whites since buying his first when he was 10 years old.

"I've always been passionate about the Red and Whites and this is something I always hoped was going to happen," Judson said.

Red Holsteins can be entered in both the Red and White Show and the National Holstein Show. Both Red and White and Holstein Champion exhibits will be eligible to compete for the Australian Grand Champion title.

New website

Visit the new IDW website www.idwaus.com or follow the Around the Barn podcast via Facebook and Spotify.



The Red and White Holstein Senior Champion line-up at 2022 International Dairy Week. Photograph: Brooke Somerville

UPGRADE YOUR MILKING SYSTEM?

If you're thinking about automation, we can help you look at the full picture from rotaries to robots, not just one type of system.

Talk to the Upgrade Specialists



1800 817 199

delaval.com



2021-22 Cow of the Year Finalists

AVONLEA SANCHEZ ALANA-IMP-ET

Herd Book: 1879986
DOB: 13/04/2015
Owner: Matthew and Nicola Templeton, VIC
Breeder: American Holstein Friesian Assoc, USA
Classifications: EX-93-4E
Dairy Strength: 94
Rump: 93
Feet & Legs: 94
Mammary: 92
Awards: 4* SBC 2xM 2xF 1xP
Best Lactation: Age 4-5: 11,294 litres
Production ABV: 4/22 Milk -54 Protein -3 Fat -9 BPI +83 HWI +100 OT
 105 MS 104 ASI -35



LACTS	LIFETIME PROD					AVG/Lact		
	Ltrs	Protein	Pro %	Fat	Fat %	Ltrs	Fat	Protein
3	39,256	1,308	3.33%	1,893	4.82%	13,085	631	436

Progeny Performance

No	NASIS	Class	EX	VG	GP	G&F	ABV	AI	ET
34		12		9	3		23	31	19

Supporting comments:

Alana had been an absolute herd favourite with her outstanding temperament, nature and type. Her breeding impact for a young cow has been quite outstanding. We absolutely love the cow for all these things. She also has an incredible pedigree being a daughter of the world-renowned MS Goldwyn Alana EX96, a daughter of an EX94 clone of Shoremar S Alicia and then Starbuck Ada EX94. Alana's youthful mammary system, big wide-open ribbed frame and the way she's transmitting those traits onto her outstanding progeny is the reason why we're nominating this amazing cow!

Judges comments:

Alana's outstanding individual pedigree, impressive production and her exceptional brood cow performance, particularly for a young cow, make her a real contender among in a group of truly elite COTY finalists.

CLYDEVALE MRSAM PISA (g)

Herd Book: 1513068
DOB: 11/11/2008
Owner: CLYDEVALE HOLSTEINS P/L atf DEE FAMILY TRUST, VIC
Breeder: AF & CM DEE, VIC
Classifications: EX-91-3E
Dairy Strength: 96
Rump: 91
Feet & Legs: 87
Mammary: 92
Awards: 12*SBC, 1xEP 2xM 2xP, LIFE 2
Best Lact: Age 5-8: 12,610 ltrs
Production ABV: 4/22 Milk +528 Protein +23 Fat +34 BPI +248 HWI
 +172 OT 104 MS 101 ASI +170



LACTS	LIFETIME PROD					AVG/Lact		
	Ltrs	Protein	Pro %	Fat	Fat %	Ltrs	Fat	Protein
5	81,904	2,863	3.50%	3,257	3.98%	16,381	651	573

Progeny Performance:

No	NASIS	Class	EX	VG	GP	G&F	ABV	AI	ET
263	2	87	1	42	42	2	137	185	47

Supporting comments:

Pisa has been a herd favourite for many years. She has had show, OFC, production and breeding success for many generations and has now retired. The Penny family is our largest and Pisa is the most significant cow from the P family. Pisa's progeny have been sold throughout Victoria and have been successful show cows with high production for their new owners. Pisa is always been a hard working aggressive feeder with a large frame and great udder. Pisa represents the kind of cow we are trying to breed and has been a pleasure to work with.

Judges' comments:

A very strong contender again this year, Pisa combines overall performance through a combination of type, production and ABVs and is a great contributor to the Australian Holstein breed.

2021-2022 Cow of the Year Finalists

CLYDEBANK ALLEN LEONIE-ET

Herd Book: 1476640
DOB: 20/03/2005
Owner: CLYDEBANK HOLSTEINS
Breeder: CLYDEBANK HOLSTEINS
Classifications: EX-94-2E
Dairy Strength: 92
Rump: 95
Feet & Legs: 91
Mammary: 97
Awards: 6*SBC
Best Lactation: Age 3-6: 11,421 litres
Production ABV: 4/22 Milk +768 Protein +0 Fat +0 BPI -42 HWI -70
 OT 105 MS 101 ASI -88

LACTS	LIFETIME PROD					AVG/Lact		
	Ltrs	Protein	Pro %	Fat	Fat %	Ltrs	Fat	Protein
5	71,434	2,181	3.05%	2,593	3.63%	14,287	519	436

Progeny Performance:

No	NASIS	Class	EX	VG	GP	G&F	ABV	AI	ET
259		105	5	43	57		32	119	22

Supporting comments:

Leonie is an outstanding individual having a great impact with her progeny possessing tremendous workabilities, above average production and classifying 5 EX, 2 VG89, 2 VG87, 1 VG85 & 2 GP. The consistent quality and performance of her descendants has been unparalleled, especially through her son Clydebank Le Damion EX93, whose 45 classified daughters in 3 herds include 5 VG 1st lactation, 50% VG on 2nd lactations and the first 5 scored on their 3rd lactations are 2VG88, 2VG87 & 1GP. A bull that adds Muzzle, Chest width, Depth to the rib, Slope to the rump & improves teat length and placement is a great asset and is now also being used by several prominent Holstein breeders.



Judges comments:

Leonie stands out for her all-round performance on farm and in the show ring, but also for her high scoring brood cow record through males and females, a fantastic contributor to the Holstein breed.

HULLABALOO BOLTON SUNDAE 7282-ET

Herd Book: 1656625
DOB: 24/03/2011
Owner: CLYDEVALE HOLSTEINS P/L atf DEE FAMILY TRUST, VIC
Breeder: MURRAY VARCOE, VIC
Classifications: EX-95-3E
Dairy Strength: 94
Rump: 95
Feet & Legs: 96
Mammary: 96
Awards: 3*SBC 1xM 1xP LIFE 1
Best Lact: Age 3-9: 12,143
Production ABV: 4/22 Milk +741 Protein -1 Fat +19 BPI -9 HWI -38 OT
 102 MS 101ASI -49

LACTS	LIFETIME PROD					AVG/Lact		
	Ltrs	Protein	Pro %	Fat	Fat %	Ltrs	Fat	Protein
4	67,219	2,087	3.10%	2,478	3.69%	16,805	620	522

Progeny Performance:

No	NASIS	Class	EX	VG	GP	G&F	ABV	AI	ET
119		68	1	16	49	2	87	37	15

Supporting comments:

Sundae is a once-in-a-lifetime cow. She has high type, production and likability. A show winner and All Australian Cow and our highest classified cow ever. Sundae is breeding very well. Her daughters and granddaughters are amongst our best ever cows. Her sons have bred 75 daughters in our herd. Currently being flushed, Sundae has retired. We have pregnancies coming from Sundae and her daughters are achieving great things. Sundae is the best cow ever at Clydevale and we hope to keep working with her for many years.



Judges' comments:

A really impressive individual in her own right, ticks all the boxes for type and production, progeny performing well, a great example of an Australian Holstein family that continues to perform through the generations.

Youth members bound for Belgium

Holstein Australia youth members are part of the team to represent Australia at the Young Breeders School in Battice, Belgium, in September.

The team members, selected after a rigorous application and interview process, come from five dairy regions across two states and represent a number of dairy breeds. Led by Justin Johnston, Glomar Holsteins Bundalaguah, Victoria, the team members are:

- Andrew Gray (Long Gully) Chapel Hill, South Australia
- Courtney Afford (Billaview), Woods Point, South Australia
- Georgia Sieben (Brindabella), Torrumbarry, Victoria
- Kaitlyn Wishart (Rowlands Park), Cohuna, Victoria
- Nathan Hart (Amelia Park), Stanhope, Victoria

The team reserve is Oakley Henry (Wilara), Tinamba, Victoria.

The Young Breeders School is an annual five-day event run by the Association Wallonne de l'Elevage (AWE). It involves hands-on workshops including bedding, showmanship and clipping, as well as classroom-based sessions, such as marketing and herd promotion. After three days of workshops and practice, participants put their skills to the test

Georgia Sieben, Torrumbarry, Victoria

"Young Breeders School is great opportunity for youth around the world who are passionate about cows to come together doing what they enjoy and to share knowledge on the dairy industry. I'm honoured to be given the opportunity to represent Australia in Belgium."

in stock judging, showmanship and calf classes.

An Australian team competed at the Young Breeders School for the first time in 2019, with all team members finishing in the top third of the results, three in the top 15.

Formerly called the European Young Breeders' School, the event's increasingly international nature has seen it rebranded to reflect its global reach more accurately.

Nathan Hart from Stanhope, Victoria

"I am hoping to learn and expand my knowledge of fitting and showing cattle, my chosen profession, by working with some of the greatest youth in our industry not only from Australia but other countries too. At the same time, I would like to gain educational knowledge about farming across Europe so I can learn from these different ideas and adapt them to work in to our farming here in Australia."

This will be the first time the school has taken place since the beginning of the COVID-19 pandemic.

Justin Johnston said the Young Breeders School was the international reference point for training and show preparation, with many countries entering teams year-on-year.

"It will be a great learning experience for our team members, and a real opportunity to showcase the talent of Australian dairy youth on the world stage," Justin said.

"It's about more than the show ring too. Key selection criteria for our 2022 team were that individuals were focused on a dairy career and were able to demonstrate leadership potential. What became clear to us during this process is that Australia is in a good place in terms of youth participation, with opportunities like this playing an important part in nurturing and developing that potential."

In addition to team partners Melbourne Royal, Jersey Australia and Holstein Australia, the team has been embraced by the Australian dairy industry with STG Australia, WFI, Genetics Australia, Bega, Coprice, Gardiner Dairy Foundation, Yarra Corporation and Ridley supporting this year.

Rohan Butler, Holstein Australia CEO, said the experience would enable the team members to hone their skills, already at a high level, and benchmark themselves against some of the best young competitors from Europe, the UK and Canada.

"We see our 2022 team members as emerging leaders so we along with the other partners will be working with them once they return from Europe to develop those skills further," Rohan said.

Following the European Young Breeders School, the Australian team will travel through Holland on an educational tour visiting several farms, Alta Genetics and Lely in what is regarded as one of the world's most productive dairy regions. **HJ**

Kaitlyn Wishart, Cohuna, Victoria

"Being selected to represent Australia at the Young Breeders School is an honour. It will be an incredible learning and networking experience in which I aspire to further build my skills and knowledge regarding the showing, preparation and management of dairy cattle."



Holstein Australia CEO Rohan Butler with 2022 team members Nathan Hart, Kaitlyn Wishart, Andrew Gray, Courtney Afford, Georgia Sieben.



Yelverdale Holsteins

Robert and Ruth Poole have received a second Master Breeder award for their herd, Yelverdale Holsteins (Yelverton, WA). Since 2014 the Yelverdale business has been run by Robert and Ruth's daughter, Claire, and their son-in-law Andrew Jenkins (Valdana Holsteins). Today, they milk 800 cows on a 290 ha milking platform plus 700 ha of support land producing 100% A2 milk.

Yelverdale Holsteins is arguably one of the most successful dairy herds in Western Australia. The Pooles began their stud with 120 cows bought from Rozendaal along with one bull, farming on 227 ha at Yelverton (25km south of Busselton). The cows came with 25 years of herd recording, which gave Robert and Ruth a racing head start. They continued herd recording, increasing their herd to 440 cows and more than doubling their land to 486 ha.

Robert and Ruth achieved a great deal in their dairying career, winning the Australian Dairy Farm Management Award and a Telstra Small Business award in 1998 for service to primary industry in the South West. They received the first Master Breeder accolade in 2003.

Farm facts

Females bred:

EX: 5

VG: 385

SBC: 81

Production awards: 1360

Lifetime production awards: 96

Points required: 3,723

Points earned: 3,954

Claire and Andrew worked at Yelverdale Holsteins for four years from 2004 before buying their own property near Denmark in 2008, to milk 250 Holsteins. In 2014 they moved back to Busselton, taking over the Yelverdale business, leasing the farm from Claire's parents and running two dairy farms, peaking at 1,100 cows.

They consolidated back to one farm, buying the Yelverdale herd over time. Andrew and Claire run a high-input high-output system, focusing on building soil health to run a productive pasture system, helping maintain a healthy high producing herd.

"It's a balanced system and everything is interlinked; if you have healthy soil, you'll grow productive grass and the cows will be

Holstein Australia services

- ✓ Registration
- ✓ Classification
- ✓ Genomics

nutritionally balanced," Claire said. The herd is fed a total mixed ration (TMR) over summer and a partial mixed ration (PMR) during the grazing season.

When it comes to breeding, they aim to breed high type, structurally sound, high-producing and positive component animals, using only A2 sires.

"We have recently started genomically testing all heifer calves, also testing the A2 gene that is a prerequisite for A2 milk supply," Claire said.

Sexed semen is used over the heifers which are synchronised for three AI joinings a year in autumn, spring and summer.

Claire and Andrew have also established the Valdana prefix and are aiming to maintain and improve the fully registered herd for the next generation.

Claire said receiving the second Master Breeder award for Yelverdale Holsteins ran parallel with their breeding program.

"We're very grateful to have had such a solid genetic foundation to start with. We're extremely happy to have continued on Mum and Dad's 40-year legacy.



Robert and Ruth Poole with Andrew, Claire, Riley, Denver, Bonnie and Wesley Jenkins.

Prefix: Yelverdale

Member: Robert & Ruth Poole and Andrew & Claire Jenkins

Location: Yelverton (25 km south of Busselton WA)

Years in industry: 20 years (Claire & Andrew)

Land size: 890 ha

Cows milked: 800 peak

Important cow families: Tuftie, Barbara & Sijje (all have Star Brood & Production awards)

Favourite bull: Glenafton Enhancer

Current bull team: Larson, Maestro, Dynasty and Privateer

Important traits: High type, structurally sound, high-producing and positive component animals

First EX cow: Yelverdale Tuftie 131



The 2022 STG Australia Virtual Holstein Spectacular National Champion, Clydevale Solomon Sunset-ET EX-91-1E, exhibited by the Dee family, Clydevale Holsteins, Macorna, Victoria, with Adam, Ryan, Mandy, Mark, Hannah and Colin Dee

Competitors join in from across the country

The online STG Australia Virtual Holstein Spectacular provides a unique opportunity for breeders to compete against the very best from across Australia – without leaving the farm.

Participants from every State submitted a 30-second video of their favourite Holstein. Judging progressed from a local to a regional to a national level, with the winners announced online after each stage in the lead up to the National Final. Finals' judge South Gippsland's Nicola Templeton (View Fort Holsteins) awarded 6-year-old Clydevale Solomon Sunset-ET EX-91-1E the National Champion title. Bred by the Northern Victorian Dee family from their two-time Master Breeder herd Clydevale Holsteins, Sunset impressed with her length of frame, her angularity and superior udder attachments.

Nicola described her as the "most complete cow of the competition".

"You have to appreciate her length of head, her long clean neck and width through her shoulders," Nicola said.

Her smooth fore attachment, snugness of her vessel, and superior height of rear udder placed Sunset ahead of Gippsland's winning 5-year-old, Wilara Alltime Lila At-ET, exhibited by Trevor and Tracey Henry and family, Wilara Holsteins.

Adam Dee said the virtual competition was a great opportunity to compete against the best in Australia, and was

thrilled to see Sunset receive the ultimate prize against some strong competition.

"Taking the video was relatively easy and meant Sunset could compete against cows she would never have seen at a show," he said.

Descending from the renowned Sunspot family of Burn-Brae, Sunset is a daughter of the 2017 NHD Victoria Winter Fair Champion and All Australian, Hullabaloo Bolton Sundae EX-95-3E 1xM 1xP LIFE1.

Sunset's list of accolades include 1st in the 4-year-old section for the Northern Region in the inaugural Virtual Spectacular in 2020, finishing 2nd in her class in the National final. She was Champion Cow at the North West Winter On Farm Challenge

in June this year, 1st 6-year-old, Supreme Udder and Reserve Senior Cow at the NHD Victorian Winter Fair in July, and Reserve Senior Champion at Cohuna Show and North West Victoria's Sub-branch Cow of the Year for 2021.

While Adam he admits is incredibly proud of what Sunset has achieved, it is her kind temperament and easy nature that makes her a truly special individual. Now on her 4th lactation, peaking at 56 litres per day, Sunset is housed in the Dees' 500-cow robot-dairy compost barn at Macorna. She has been short bred to Eba Davinci, with an IVF program scheduled in the coming weeks, with Adam suggesting the sires Delta Lambda and Siemers Rengd Parfect as potential mates.

Noting her EX-93 point mammary, Adam said Sunset was probably the best-uddered cow they have ever bred. "For us she is the ideal cow for both type and production." **HJ**

Virtual Holstein Spectacular 2022 National Results

Judge: Nicola Templeton, View Fort Holsteins & Jerseys

2 year old: Champion: Childers Cove Doc Isla, Eugene Rea, Western District; **Reserve:** Wilara Hotspot Tiara, WE, MJ & TW Henry, East Gippsland; **Honourable Mention:** Gorgala Unstopabull Tiffany, CB & KE Gordon, North West Victoria.

3 year old: Champion: Rowlands Park Chief Balertwine, RL & TL Wishart, North West Victoria; **Reserve:** Gilabils Impression Cuteness, H & CJ Stewart, Darling Downs, Queensland; **Honourable Mention:** Katandra Park Mafia Melva, DM & LM Fry, WA.

4 year old: Champion: Wilara Alltime Lila At, WE, MJ & TW Henry, East Gippsland; **Reserve:** Rowlands Park Solomon Donica 2, RL & TL Wishart, North West Victoria; **Honourable Mention:** Childers Cove Lenux Milly, Eugene Rea, Western District, Victoria.

5 year old: Champion: Murribrook Doorman Rae, Brittany Legge, South Coast & Tablelands; **Reserve:** Golderama Racer 2386, LB & MA Golder, Fleurieu & Central SA; **Honourable Mention:** Kayton Montross Amanda, RJ & RN Robins, North West Victoria.

6+ year old: Champion: Clydevale Solomon Sunset, Clydevale Holsteins, North West Victoria; **Reserve:** Murribrook Goldwyn Verbena, D & N Smith, Northern Victoria; **Honourable Mention:** Damar Lady Melantha, DM & LM Fry, WA.

National Overall Champion: Clydevale Solomon Sunset, Dee family, Clydevale Holsteins, North West Victoria; **Reserve:** Wilara Alltime Lila At, WE, MJ & TW Henry, Wilara Holsteins, East Gippsland.



AUSTRALIA'S DAIRY YOUTH EXPO

EXCITING ANNOUNCEMENT

WIN yourself a fully imported holstein heifer by just entering this years competition.

Every video that is entered in the 2022 Youth Expo competition will go into the lucky entry prize draw to win an Elite Holstein Heifer that has been born in Australia recently as a result of the STG Australia breeding program. That is right you can win a fully imported ET heifer calf for just entering your video in the event.

The more videos you enter the more chances you get to win this exciting Lucky Entry Prize.



- Open to ALL DAIRY BREEDS with great prizes on offer
- Entries will be entered via video footage
- Ideal school holidays project
- Videos to be taken between 25th June & 10th October 2022
- Entries close at 5pm on 10th October 2022
- Online results and reasons will be presented in late October 2022



ENTRY FORMS AND FULL EVENT DETAILS ARE ON OUR WEBSITE www.stgenetics.com.au



STG AUSTRALIA ARE PROUD TO BE A SPONSOR OF THE YOUNG BREEDERS SCHOOL FOR 2022

We wish the 5 participants Nathan Hart, Kaitlyn Wishart, Andrew Gray, Georgia Sieben & Courtney Afford all the best representing Australia at the Young Breeders School in Belgium in September.





Courtesy of Verified Holsteins Online, exhibitors enjoyed egg and bacon rolls on the last day of the show, with the classifiers doing the rounds before the first class of the day.



This year's Australian Young Breeders School team came together for the first time at the Victorian Winter Fair.

All the fun of the Winter Fair!

July's Victorian Winter Fair was a watershed moment for many including Holstein Australia.

Last year's Fair was sandwiched between state-wide COVID lockdowns but this year was back to full strength with a packed schedule both in the show ring and for Holstein Australia.



The larger-than-usual Holstein Australia stand (photographed on set up day) hosted many visitors over the two days of the Fair.



Holstein Australia classifiers were up early meeting online with their counterparts at Holstein Canada to discuss all things 'class'. And celebrate Rob Marshall's birthday! (Above)



Gorbro Holsteins investing in champions

BY JON HOLLAND

The NHD Victorian Winter Fair returned to capacity this year with all eyes on Bendigo on the last day of June for the all-important Holstein in-milk classes.

Fair judge was renowned breeder, Ben Govett, Tandarra Holsteins and Brown Swiss. As the associate judge at the inaugural Fair in 2014, Ben was thrilled with the opportunity to return to the event he believes is one of the best dairy shows in the country.

Reflecting on his experiences competing and officiating at shows, Ben said events like the Winter Fair motivated dairy farmers to continue milking and breeding better cows.

“Shows are important for harbouring youth and passing on knowledge,” he said. “You can gain a lot of life skills as a kid when you work at a show.

Problem-solving, teamwork, discipline, responsibility – as well as learning how to work alongside adults.”

Assisting Ben as associate judge was Tasmanian breeder, Olivia Millhouse, Southwick Holsteins. Ben said he appreciated Olivia’s input throughout the show and enjoyed their discussions in the ring.

“It made it easy having a second set of eyes with you in the ring – someone to share ideas with and talk to when breaking down the classes,” he said. “We were both looking for a similar type of cow – the type we would like to milk on our own farms. These were the cows we saw in the Championship line-up.”

In selecting their Senior Champion, Ben and Olivia could not go past the strength and balance of their winning 5-year-old, Avonlea Rival Ruth EX-91-1E, exhibited by the Gordon family (Gorbro Holsteins), Cohuna.

“My Champion is just a fantastic cow – so correct and well balanced,” Ben said in his comments. “She’s not the biggest cow – but cows don’t need to be big to win. They need to be correct.”



Winning 5-year-old and Senior Champion Cow, Avonlea Rival Ruth EX-91-1E with Glen Gordon, Gorbro Holsteins, Cohuna, Victoria.



Senior Champion Cow, Avonlea Rival Ruth EX-91-1E with Glen Gordon, Gorbro Holsteins, Cohuna, Victoria, and judge Ben Govett, Tandarra Brown Swiss and Holsteins, Tandarra, Victoria.

It was Ruth’s extra width and depth of chest, strength of topline, and overall balance that placed her ahead of the Reserve Champion, Clydevale Solomon Sunset EX-91-1E, exhibited by the Dee family (Clydevale Holsteins) of Macorna. Awarded Best Udder of Show, Sunset used her superior udder attachments to place over the Honourable Mention, Eclipse Yorik Tabaret-ET EX-91-2E 1*, exhibited by

the Jones family, (Cypress Grove Holsteins), Foster.

Ruth’s victory delivered the Gordon brothers their third consecutive VWF Senior Champion title. Gorbro Holsteins also claimed the Intermediate Champion, the Reserve Intermediate Champion, and the Reserve Senior Red and White Champion, earning them the prestigious Premier Exhibitor title for 2022.

The Master Breeder herd, based at Cohuna in north west Victoria, is a family operation, managed by brothers Drew and Glen Gordon, their parents Ross and Janette, Drew’s wife Stacey and Glen’s wife Genna. Milking 650 cows, they specialise in high performance pedigrees, mostly registered Holsteins, with a select group of elite Jerseys and Illawarras.

Alongside their loyal list of return private buyers, the Gordons host regular elite on-farm auctions for their cattle, with their sales in 2017 and 2020 averaging over \$7,500 and grossing over \$400,000 each. Their next sale is scheduled for November 2022, showcasing deep pedigrees and premier Australian cow families.

To maintain return buyer interest, herd

manager Drew says it is important they re-invest in different bloodlines from proven cow families.

“Breeders are always looking for something new and exciting, so we try and buy the best and breed from the best – then we can offer our best for our sales,” Drew said. “We want cow families we can build from, that are reliable, and are performing well in Australia, so our buyers can have confidence in them.”

Drew said that while they usually invest in cows they believe will make successful brood cows, Ruth was bought specifically for the showing. Since calving at Gorbros in October 2021, Ruth has delivered on her promise, named Reserve Champion Holstein at International Dairy Week in January, and now VWF Grand Champion.

“When we first saw Ruth, she was a really good young cow we thought could be a big-time show cow,” Drew said.

Bred by Master Breeders John and Cherie Gardiner, Ruth is a daughter of Avonlea Goldwyn Ruth EX-92-1E 3xM 4xF 2xP, tracing back to the brood cow Cha Hol Tempo Roletha W 6702-ET VG85 4* 2xM. Ruth was among a group of 11 cows the Gordons bought off the Gardiners, which also included the 2021 VWF Champion, Murribrook Reginald Victory EX-92-2E.

“Going to shows and having success with these cows is a great way to showcase our herd and promote the breed and our industry,” Drew said. “It’s great being able to work with cows like Ruth, seeing how they develop, and giving them the opportunity to show their full potential.”

An Awesome Intermediate Champion

The Gordons’ success continued with the Intermediate Championship, claiming the Supreme Intermediate title with their junior 3-year-old entry, Windy View Awesome Pauline-RED VG88, and Reserve Intermediate Champion with their junior 2-year-old, Murribrook Sidekick Cybele VG85.

The Honourable Mention and Intermediate Best Udder, Rowlands Park Chief Balertwine-ET VG87, exhibited by the Wishart family (Rowlands Park Holsteins), also has a close connection to the Gorbros herd. Her dam, Gorbros Atwood Balertwine-ET EX-90-2E 4* was bought by the Wisharts at the Gordons’ sale in 2017.

For Drew, it was thrilling to see their



Supreme Champion Intermediate Holstein – Windy View Awesome Pauline-RED VG88, exhibited by Gorbros Holsteins, led by Alex Crawford.

friends and neighbours achieve success through a cow bought at their sales.

“The Wisharts have done so well with the original Balertwine cow – it’s great to see them have success with the daughter now as well,” Drew said.

Drew was also excited by Pauline’s success at her first show. Pauline came to Gorbros in 2021 among a group of young cows they bought from western districts breeder, Jason McVilly. A daughter of Barostin Goldkite Pauline 713-ET-RED EX-91-6E 1* LIFE1, her pedigree is loaded with high type and longevity, with 7 from 8 generations of dams exceeding 7 lactations.

“Glen picked her out from the other heifers as having a better pedigree,” Drew said.

“When she calved, she really stood out with her great frame and terrific udder.”

Pauline classified VG88 fresh on her second lactation, and has become a real herd favourite thanks to her bright red colour and easy-going nature. Now with her showing success, Drew is pretty excited about her future.

For judge Ben Govett, Pauline was as a “very complete cow”, praising her dairy strength and balance, and exceptional mammary system.

“She is a fantastic cow – a cow with great angularity and dairyness to her frame,” Ben said. “She has a fantastic fore attachment and beautiful teat placement with a really strong ligament. She’s so correct and so

balanced throughout – the kind of cow I really like to work with.”

When naming his Champion, Ben noted Pauline as being on her second lactation, giving her the advantage for her superior angularity and balance over her herdmate, the Reserve Intermediate, Murribrook Sidekick Cybele VG85. Cybele won her junior 2-year-old class comfortably thanks to her superior scale and capacity, with Ben describing her as a young cow with a fantastic frame and a big future. She tracked a little smoother on a more correct set of legs than the Honourable Mention and best intermediate udder, Rowlands Park Chief Balertwine VG87.

Fast track for Junior Champion

For his Junior Champion, Ben chose the winter 2021 born calf, Mario Park Chief Alicia-ET.

“This heifer caught my eye straight away,” he said of his Champion heifer. “I tried for the rest of the class to find another heifer to best her – and I couldn’t.”

Bred by NSW breeders Murray and Jane Polson (Mario Park Holsteins), Alicia was exhibited by the partnership of Cameron Yarnold, Todd Wilson and Natt Lowman. The partnership bought Alicia at the Cherrylock “Fast Track to Success” sale in November 2021, and has since remained under the astute management of professional fitters, Brad and Jess Gavenlock and their Cherrylock team.

Brad says Alicia typifies the type of animal he likes to promote in his sales.

"We called our sale 'Fast Track to Success' – and so far it has delivered on its promise," Brad said. "It really sums up our sale – giving farmers an opportunity to fast track their breeding program, fast track their genetic improvement and fast track their showing success."

A daughter of renowned show Champion, Mario Park Sid Alicia EX-92-3E 1xM LIFE1, Chief Alicia has now replicated her dam's success as a class winner at both Sydney Royal and now the VWF. Alicia's next dam is the 2018 Holstein Australia Cow of the Year, Mario Park Goldwyn Alicia-IMP-ET EX-93-4E STP 16*.

Ben gave Alicia the advantage over the Reserve, Lightning Ridge CMD Thunder Nico-TW, for her overall correctness, cleanliness and style, and superior locomotion.

"I like correctness – and heifers that are correct make cows that are correct," Ben said of his junior line-up. "My Junior Champion is just that – she's so correct, and so balanced. She has that style and angularity and femininity that I really admire."

The Reserve Junior Champion was exhibited by the partnership of Gippsland breeders Mal Nikora and Kelly Bleijendaal, and New Zealand breeder Nathan Bayne. Nico used her extra depth and sweep to her fore and rear rib to place over the broad and open framed senior heifer, Belrue Moovin Lynley, exhibited by the Railton family, Belrue Farms, Echuca.

Back-to-back Red and White Champion

It was back-to-back titles at the NHD Victorian Winter Fair for Brad and Jess Gavenlock's Red and White Champion, Bluechip EV Shesaawesome Apple-ET-RED EX-91-2E. Apple was Champion in 2021 under judge Brian Leslie, and has returned in 2022 on her 4th lactation to the to reclaim her Senior Red and White Holstein Champion crown.

Naming Apple as Champion was an easy decision for judge Ben Govett.

"She's a cow that exudes a lot of quality," Ben said of the Excellent 5-year-old. "She's clean right throughout, she's long of her body, long of her neck and long of her rump – and a fantastic mammary system."

It was Apple's cleanliness through her front end, and superior style and dairy quality



Supreme Junior Champion Mario Park Chief Alicia, exhibited by Yarnold, Wilson and Lowman partners, led by Zoe Hayes.

that placed her over the very capacious, open ribbed cow in Reserve, Hawova Burst Jodie-RED EX-92-2E, exhibited by Gorbros Holsteins.

"You really have to admire the depth and openness of rib on this cow," Ben said, praising the 8-year-old Jodie for her capacity and longevity. "For a cow her age and number of calves – she's holding her udder so well while producing a lot of milk."

Jodie's superior dairy strength gave her the advantage ahead of the entry of Quality

Ridge Holsteins, Amelia Park Faber Naomi 2nd-RED VG86.

With wins in both red and white and black and white classes at State shows, Royals and IDW, and now back-to-back Champion titles at the Winter Fair, Sheeawesome Apple has been a dominate force in the Holstein show ring since the Gavenlocks bought her as a calf in 2016 from Dean and Di Malcolm.

Brad Gavenlock attributes much of Apple's success to her ability to milk well into her lactation, and her impressive fertility,



Red and White Senior Champion Holstein, Bluechip EV Shesaawesome Apple-ET-RED EX-91-2E, led by Jess Gavenlock, Cherrylock Holsteins.

having calved in October every year since 2018 – and with a heifer calf each time. Apple is due to calve again this spring, pregnant with sexed semen to the popular young sire Avant-Garde I Latenite-RED.

Apple's influence at the Fair went beyond her own success, with three direct daughters featuring in the red and white junior championship line-up, including the Reserve Junior Red and White Holstein, Cherrylock Applesauce-RED, exhibited by Rod and Steph Goode, Baronia Glen Holsteins, Poowong. Applesauce couldn't match the overall balance and angularity of the Red and White Junior Champion, Westmuir LR Mirand Apple-ET, also exhibited by the Goode family.

Rod and Steph milk 350 cows on their farm at Poowong in southern Gippsland. Steph has a keen interest in genetics, especially descendants of the renowned 'million dollar' cow, KHW Regiment Apple-ET-RED EX-96-3E.

"I always wanted an Apple – it's one of the best red and white cow families in the world, and it has always been my aim to have an Apple with our prefix attached to it," Steph said. "We're just really grateful we got the chance to buy these heifers and one day milk them in our herd."

Steph says her goal of investing in elite cow families is to build better type and production into their breeding program.

"For me, type is really important," she said, emphasising the need to balance high type with high production. "We need cows that produce, but I also want cows that will last – cows with well attached udders and a bit of chest and capacity to their frames."

The Intermediate Red and White Champion and Supreme Intermediate Holstein Champion went to the 3-year-old Windy View Awesome Pauline-RED VG88, exhibited by the Gordon family.

Pauline used her superior mammary system and style in the red section to place ahead of the Reserve, Rusty Red Jacot Isabella-IMP-ET-RED, exhibited by Judson Jennings, Rusty Red Holsteins.

"My red Champion is so correct and so stylish," Ben said in his comments. "She's a real complete cow."

Isabella placed ahead of another Jacot daughter in Aroona Jacot Netta 3491-RED GP84, exhibited by the Eloora Pastoral Co of Deniliquin NSW.

NHD Victorian Winter Fair

Judge: Ben Govett – Tandarra Holsteins and Brown Swiss, Victoria;

Associate Judge: Olivia Millhouse – Southwick Holsteins, Tasmania

Supreme Junior Champion: Mario Park Chief Alicia-ET, Yarnold, Wilson & Lowman; **Reserve:** Lightning Ridge CMD Thunder Nico-TWIN, Winwood & Busybrook Holsteins; **Honourable Mention:** Belrue Moovin Lynley, Railton family, Belrue Farms, Echuca, Victoria.

R&W Junior Champion: Westmuir LR Mirand Apple-Red, R & S Goode, Baronia Glen Holsteins, Poowong, Victoria; **Reserve:** Cherrylock Applesauce-Red, R & S Goode, Baronia Glen Holsteins, Poowong, Victoria; **Honourable Mention:** Elmar Mirand Farlex 4688-Red-PO, Abbie Hanks, Wellcoora Holsteins, Cobden, Victoria.

Supreme Intermediate Champion: Windy View Awesome Pauline-Red, Gordon family, Gorbro Holsteins, Cohuna, Victoria; **Reserve:** Murrubrook Sidekick Cybele, Gordon family, Gorbro Holsteins, Cohuna, Victoria; **Honourable Mention:** Rowlands Park Chief Balertwine, R & T Wishart, Rowlands Park Holsteins, Mead, Victoria.

R&W Intermediate Champion: Windy View Awesome Pauline-Red, Gordon family, Gorbro Holsteins, Cohuna, Victoria; **Reserve:** Rusty Red Jacot Isabella-Red-IMP-ET, Jennings & Mahoney, Rusty Red Holsteins, Chapplevale, Victoria; **Honourable Mention:** Aroona Jacot Netta 3491-Red, Eloora Pastoral Co, Aroona Holsteins, Deniliquin, NSW.

Supreme Senior Champion: Avonlea Rival Ruth, Gordon family, Gorbro Holsteins, Cohuna, Victoria; **Reserve:** Clydevale Solomon Sunset, Dee family, Clydevale Holsteins, Macorna, Victoria; **Honourable Mention:** Eclipse Yorik Tabaret-ET, Jones Family, Cypress Grove Holsteins, Foster, Victoria.

R&W Senior Champion: Bluechip EV Shesaawesome Apple-Red-ET, B & J Gavenlock, Cherrylock Holsteins, Tallygaroopna, Victoria; **Reserve:** Hawova Burst Jodie-Red, Gordon family, Gorbro Holsteins, Cohuna, Victoria; **Honourable Mention:** Amelia Park Faber Naomi 2nd-Red, J & R Fisher, Quality Ridge Holsteins, Kyabram, Victoria.



Intermediate Red and White Holstein Championship: R&W Intermediate Champion, Windy View Awesome Pauline-RED VG88, exhibited by Gorbro Holsteins, R&W Reserve Intermediate Champion, Rusty Red Jacot Isabella-IMP-ET-RED, exhibited by Judson Jennings, R&W Intermediate Hnr Mention, Aroona Jacot Netta 3491-RED GP84, exhibited by the Eloora Pastoral Co.





Hot contest at Malanda Show

In far north Queensland, the strong entries and welcoming hospitality were a highlight for Malanda Show judge Kelvin Cochrane (Miss Holsteins). Excited by the high standard of Holsteins on show, he praised the exhibitors for the depth of quality – particularly the in-milk competition.

“The senior show was a lot of fun, with all the classes hotly contested,” Kelvin said. “In many classes, there were cows down the line that, on other years, could easily have won the show.”

In a close decision, Kelvin selected the 8-year-old entry of Henry and Anna Bevan and family, Bevandale Gillespy Franny VG87, for his Senior Champion.

“I adored this cow from the moment she came in the ring,” he said of Franny. “She was so dairy and stylish on the move, so long from end to end, and had a beautiful high wide mammary.”

Franny stems from the Bevandale ‘F’ family, boasting multiple generations of high performance VG and EX Star Brood Cows. Franny was previously crowned Intermediate Champion at Malanda as a 3-year-old in 2017, while her daughter, Bevandale Dealmaker Franny VG85, was Intermediate Champion in 2021.

Returning to Malanda as an aged cow, Franny used her superior leg set and overall length and quality of frame to place over the Reserve Champion and Best Udder of Show, Ourway Atone Rachelle VG86, exhibited by Colin and Shelley Daley, Ourway Holsteins.

Kelvin praised Rachelle for her tremendous height and width of rear udder, saying she was a young cow “destined for a brood ribbon” in the future.

Honourable Mention went to the 5-year-old “ultra-dairy milk machine”, Millaa View Bursting Pansy, exhibited by David and

Tonia Daley, Millaa View Holsteins.

David and Tonia also claimed the Intermediate Champion title with their junior 2-year-old entry Millaa View Frosty June. The June family has performed consistently for the Daley’s for nearly 50 years, founded on the brood cow Millaa View Linmack June VG85.

Kelvin found June to be a comfortable winner of the Intermediate section. “She has such a big open frame to her,” he said. “She’s so deep and wide throughout, with her mammary welded onto her big frame.”

June used her superior capacity and scale to place ahead of the Reserve Intermediate, the very correct senior 2-year-old, Bevandale Ammo Blanca-RED-PO GP83, exhibited by the Bevan family. The Bevans also claimed the Honourable Mention and Best Intermediate Udder with Bevandale Lamba Lorraine 2 GP84.

In a strong showing, the Bevan family’s Master Breeder herd swept the Junior



Malanda Dairy Show Senior Champion Holstein Cow, Bevandale Gillespy Franny VG87, exhibited by the Bevan family, Bevandale Holsteins, with Judge Kelvin Cochrane, Dairymaids Summer Trevor & Frances English, and handler Simon Tognola. Photograph: Anne Daley



Overjudge Phil Hentsche and sponsor Clare Weatherly (Rabobank) with the Young Dairy Judging participants. Photograph: Anne Daley

section, taking the Junior Champion, Reserve and Honourable Mention, on their way to winning the prestigious Premier Breeder and Exhibitor title.

In his comments, Kelvin said his Junior Champion, Bevandale Hancock Mollyjean, "was hard to fault" and "oozed style". Following Mollyjean in Reserve was herdmate Bevandale Luster Sally who used her superior rump and tail setting to place ahead of the Honourable Mention, Bevandale Unstoppabull Sally-RED.

Seventeen participants in the John & Cherie Bevan Memorial Dairy Youth Challenge with Mark Patullo, WWS. Photograph: Anne Daley



2022 MALANDA SHOW

JOHN & CHERIE BEVAN MEMORIAL DAIRY YOUTH CHALLENGE: Kimberly Daley, Rebecca Payne, Nathan Daley & Mary English

YOUNG JUDGES – DAIRY:

Junior: 1st Erin Burtenshaw, 2nd Frances English, 3rd Nathan Daley
Senior: 1st Anastasia Theochari, 2nd Rebecca Payne

DAIRY PARADERS:

Junior: 1st Abigail Daley, 2nd April Burtenshaw, 3rd Lincoln Warburton
Intermediate: 1st Nathan Daley, 2nd Mary English, 3rd Frances English
Senior: 1st Terese Daley, 2nd Patrick English, 3rd Lachlan Johnston

HOLSTEIN SHOW:

Senior Champion: Bevandale Gillespy Franny, Bevan family, Bevandale Holsteins, Ravenshoe;
Reserve: Ourway Atone Rachele, CJ & SJ Daley, Ourway Holsteins, Millaa Millaa; **Honourable Mention:** Millaa View Bursting Pansy, MB Daley, Millaa View Holsteins, Millaa Millaa

Intermediate Champion: Millaa View Frosty June, MB Daley, Millaa View Holsteins, Millaa Millaa;
Reserve: Bevandale Ammo Blanca, Bevan family, Bevandale Holsteins, Ravenshoe; **Honourable Mention:** Bevandale Lamba Lorraine 2, Bevan family, Bevandale Holsteins, Ravenshoe

Junior Champion: Bevandale Hancock Mollyjean, Bevan family, Bevandale Holsteins, Ravenshoe;
Reserve: Bevandale Luster Sally, Bevan family, Bevandale Holsteins, Ravenshoe; **Honourable Mention:** Bevandale Unstoppabull Sally-RED-PO, Bevan family, Bevandale Holsteins, Ravenshoe

Most Successful Exhibitor: Bevandale Holsteins, Bevan family, Bevandale Holsteins, Ravenshoe

Most Successful Breeder: Bevandale Holsteins, Bevan family, Bevandale Holsteins, Ravenshoe

QUALITY

COST

Change the way you see nutrition.

At CopRice, we are committed to delivering the highest quality rations, regardless of your specification, every time. Our pellets, mashes and concentrates contain carefully-selected Australian-grown grains, legumes, processed grain products,

vegetable proteins and other quality nutrients. Our state-of-the-art facilities and world-class quality assurance systems mean you can be confident of the composition and safety of every load.

Book an obligation-free on-farm consultation and find out how CopRice can deliver a nutrition program that really stacks up.



1800 267 742
coprice.com.au

NUTRITION THAT STACKS UP

®Registered trademark of CopRice, a division of Ricegrowers Limited. CPA21505C

Fantasia Cupids – Living the dream

As a young sharefarmer working for the Dawes family on their dairy at Meningie in South Australia, Master Breeder Colin Seidel dreamed of one day owning his own farm and milking a large herd of registered Holsteins.

When the Dawes family dispersed their herd, Colin and his wife Dianne were offered first pick, helping them to set up new share operation at OB Flats on the outskirts of Mt Gambier.

Colin had grown up with stud cattle and at the time felt he had “a pretty good herd of cows”. He established Fantasia Holsteins in 1982. Forty years on, Colin has achieved his dream, farming 320 hectares of rich volcanic soils at Allendale East, along South Australia’s east coast.

“I had always said to Dianne that one day, I’d love to own 300 stud cows and 300 acres of land. Well now I’ve got 800 acres of land and over 1,000 head of stud cattle,” Colin said proudly.

When they began registering the cows through the appendix system, Colin was unsure of a name for his stud prefix. Dianne suggested ‘Fantasia’ – telling Colin his dream of owning his own farm and stud herd was just a fantasy.

In 2006, Fantasia Holsteins was awarded Master Breeder status, something Colin proudly credits to his family, to years of hard work, and to his cows – in particular, the Cupid family.

True family farm

Colin and Dianne bought their Allendale property in 1994. Now retired from the dairy, the day-to-day management is

under the care of their sons Will and Phil Seidel, with Will’s partner Ollie and Phil’s wife Alicia also involved. Elder brother Jason is a local accountant and helps with the farm finances, while Phil and Alicia’s children Georgia (19), Hannah (17), Lucy (14) and Jake (13) pitch in when they can.

Youngest brother Will describes their structure as a “true family farm”, that functions effectively without designated job titles.

“We all know our roles and we all work together,” he said. “It’s not about defining who does what – it’s just about getting on with the business.”

The milking herd consists of 580 registered Holsteins, with 60 Jerseys registered under the Pyelanda prefix. The diet is 85% total mix ration (TMR), made up of mostly home-grown fodder, supplemented by 2 tonne per cow per year of crushed wheat and canola. They cut about 3,000 tonnes of hay each year, growing a mixture of annual ryegrass and clover pastures, cereal crops and summer crops across 320 hectares, of which 200 hectares is irrigated under pivots.

The TMR is calculated to encourage high components, with the Fantasia herd boasting an impressive 305-day average of 8,500 litres and 670 kg milk solids. Will says their experience preparing cows for shows when they were younger taught them a lot about feeding cows, knowledge he and Phil have translated into the milking herd ration.

“We feed all our cows like we would a show cow – getting that mix right to get a real fill on them,” Will said. “A cow can only

give you what you put in, so you need to give them the right feed and right amount of feed. Then, if you have the ‘right’ cow – you’ll get the results.”

Will says having the ‘right’ cow is a priority for their business, breeding cows that are not extreme, that are well balanced, sound in the udder, and with great dairy strength. It is then up to the farmer to look after them, and allow them to develop and reach their full potential.

“Much can be gained by having cows that are bred true-to-type,” he says. “We breed for functional cows. Cows that will milk – but also cows that will last a lifetime.”

Like his brother, Phil takes a commercial-minded approach to breeding cows and building pedigrees, placing great emphasis on functional type.

“I’m happy with a cow that may only make it to 86 points, but does 10 lactations,” he said. “This is better than an 84 point heifer that only lasts for one.”

Phil believes strength of cow family should be the basis of any breeding decision, favouring proven genetics ahead of young sires where possible.

“Genomics has a place – but I won’t use a ‘flashy’ bull unless he has a proven pedigree to support it,” Phil says, preferring bulls from maternal lines that are backed by high classification scores and favourable sire stacks. “I’ve seen too many disappointments from using bulls that weren’t supported by a strong pedigree – and once you lose that capacity and functionality in a pedigree, it takes generations to get back.”

Fantasia Holsteins Master Breeder Colin Seidel with his sons, Will and Phil, with Phil’s children Hannah, Lucy and Jake.



Breeding for type has always been a priority for the Seidels with their Fantasia Holsteins and Pyelanda Jersey herd currently boasting 43 Excellent cows. In April, the classifier awarded 17 Holsteins the elusive Excellent 90+ score, including three members of their Cupid cow family. Among them was the 10-year-old Fantasia Guthrie Cupid EX-91-3E STP.

The 'right' cow

Guthrie Cupid typifies Will's vision of the 'right' cow, scoring EX-92 for mammary and EX-93 for dairy strength, and receiving her Superior Total Performance (STP) award.

"Guthrie Cupid is an incredible cow – probably the best looking cow on our farm by a mile," Will says proudly. "She's got that big open rib and great spring to her – and an incredible udder that just pours the milk out."

The Seidels no longer show their cows, though they occasionally enter the local On Farm Competition "when the right cow comes along". Guthrie Cupid was in peak form in 2017, winning the 5-year-old class for South Eastern South Australia.

"Guthrie Cupid would have made a great show cow," Will says. "She's got a real 'showy' udder – really high and wide at the rear, and super texture."

Guthrie Cupid is a daughter of Fantasia Dundee Cupid-TW VG86 making her a 6th generation to exceed 5 lactations. Her lifetime record-to-date sits at 60,000 litres, peaking as an 8-year-old at 800 kg milk solids in 305 days with a PI 123. When interviewed, Will was eagerly waiting for his favourite cow to return to form as she prepared for her 7th lactation, due to calve in August to the high milk sire Peak AltaGopro.

While Guthrie Cupid is Will's favourite, for brother Phil, it is the 10-year-old, Fantasia Scoobydo Cupid EX-90-1E STP.

Like Guthrie Cupid, Scoobydo Cupid classified Excellent in April and was awarded an STP status.

Phil describes Scoobydo Cupid as "a very functional, no fuss kind of cow", saying it's her balanced conformation, her longevity, and her remarkable dairy strength (EX-94) that makes her "his type of cow".

"I love this cow," Phil says. "She's not a huge cow or a tall uphill front-ended cow – but a cow with a big barrel and really good udder."



South East South Australia OFC 2017, 5-year-old, Fantasia Guthrie Cupid EX-91-3E STP.

Scoobydo Cupid's granddam, Fantasia Integrity Cupid VG88, was one the Seidel's all-time great production cows, completing 11 lactations with a lifetime total of 84,978 litres and 6,569 kg milk solids. She fell just shy of her dam Fantasia Prelude Cupid VG88 STP(Gold) 1xM 1xP LIFE3 who produced 99,771 litres from 10 lactations with a lifetime PI average of 112.

The sire Ronnybrook Prelude had a major influence on the Fantasia herd.

He produced 9 STP daughters, including the 100,000 litre lifetime cow Fantasia Prelude Cherry VG85 STP 6* LIFE 3, a granddaughter of the 1996 Mt Gambier Fair Junior Champion, Fantasia Fancy Cupid VG86 4xM 3xP.

"Dad bought the Prelude semen when it was on a local special for \$135 per dose," Will laughed. "I'm not sure what he was thinking at the time – I think he was just trying to test mum."



Fantasia Scoobydo Cupid EX-90-1E STP.

Australian Holstein Cow Family



Fantasia Potsy Cupid EX-90-1E.

Homegrown confidence

The 8-year-old Fantasia Potsy Cupid EX-90-1E was the third Cupid family member to score Excellent during the April classification visit. An extreme components cow, Potsy Cupid finished her 5th lactation with an impressive 845 kg milk solids from 296 days, including a whopping 531 kg of fat at 5.9% and a PI 120.

She is a direct daughter of Integrity Cupid sired by the homebred bull Fantasia Potter Potsy. Her daughter by Fantasia Planet Earth, Fantasia Earth Cupid 2 VG86, is a 2nd generation of natural breeding – something Phil is quite proud of.

“We have a lot of faith in our own bulls,” he says confidently. “It’s about having faith

in your own breeding and your own cow families.”

Earth Cupid 2 inherited her dam’s imposing frame along with her productive power, boasting a 2nd lactation record over 10,000 litres and 750 kg milk solids.

“She’s a damn good cow,” Phil said of the 6-year-old. “And she’s still young – I reckon she’s easily got more points in her in the future.”

The Seidels have three daughters from Earth Cupid 2 – the eldest a 2nd lactation VG 3-year-old, Fantasia Solomon Cupid VG85. Phil says the Walnutlawn Solomon daughter is typical of the cow family.

“She’s got a really nice udder and heaps of middle for a young cow,” Phil says. “She’s milking well and she’s in calf again. It’s



Fantasia Solomon Cupid VG85.

pretty typical of the Cupids really – just doing what needs to be done.”

Rock solid foundations

The 7-year-old Fantasia Kalaber Courtney VG88 headlines an emerging branch of the Cupid family – the Courtneys. Phil says the Courtneys are an exceptionally good line of cows that transmit the capacity and longevity of the Cupids, but with slightly higher milk yields.

The Courtneys stem from the Memory Court Recount Rock daughter of the foundation cow, Fantasia Kingsley Cupid App4. Born in 1985, Fantasia Rock Cupid App3 VG85 STP 1xM LIFE 4 was the Seidel’s first cow to exceed 100,000 litres lifetime.

“Cows like Rock Cupid and Kingsley Cupid were the ones that really cemented everything,” Phil says.

Despite calving 11 times, Rock Cupid only produced two registered daughters – the standout being the red and white Meadowlake Jubilant daughter, Fantasia Jub Cutie-RED VG87 1xP.

“She was an underrated cow,” Phil said of the Jubilant daughter. “She was a huge, big barrelled thing that had a rump about 2 foot wide at the pins!”

Cutie peaked on her second lactation,

Cupid family tree



Fantasia Kalaber Courtney VG88 and Fantasia Earth Cupid 2 VG86.



producing more than 10,000 litres and 640 kg milk solids in 305 days. "As a 3-year-old, she was looking really good," Phil says. Excited by the scale and style of the big red cow, the brothers spent months training her to halter in preparation for the Western Victoria Feature at Camperdown Show. Unfortunately, the three-hour drive across the border was not a successful trip, with Cutie never making it into the showing.

"She just kept spooking at the shadows," Phil laughs. "We never even got her out of the shed."

The style and strength of the Jubilant has continued through her many descendants, including one of the Seidels biggest-ever production cows, Fantasia Talent Courtney EX-90-1E STP 1xEP 1xF LIFE1. A daughter of the production powerhouse, Fantasia Metro Courtney VG88 1xM 1xF, Talent Courtney reached 12,211 litres and more than 920 kg milk solids on her 4th lactation.

"She was a fantastic cow," Will says of Talent. "She was so tough and hassle free for such a big production cow."

Talent Courtney's daughter, Fantasia Kalaber Courtney VG88, inherited her dam's massive black frame, silky texture – and will to milk. "Kalaber Courtney is one hell of a cow," Phil says. "She is just like her mother – absolutely something special, and her udder is flawless!"

Will agrees with his brother in his praise of Kalaber Courtney. "She's a real 'straight in-straight out' no fuss cow that really milks," Will says. "She's the kind of cow that you could put a halter on and have some fun with."

Kalaber Courtney has produced four daughters from four calves, with her eldest daughter, Fantasia Kingboy Courtney, on her way to an impressive first record, exceeding 400 kg milk solids in just 200 days. A Scientific Daryl daughter is showing great promise as she freshens for her first lactation, and Will says a fancy Croteau Lеспerron Unix daughter is the standout among the Fantasia yearlings. Kalaber Courtney herself is due to calve in December, pregnant to sexed Stantons Chief – a combination the brothers are very excited about.

Despite their affection for their cows, Phil says there are no favourites when it comes to cows that don't perform.

"We run a very commercially minded set-up here," he says, crediting their low stock turnover, and the use of sexed semen in allowing them to maintain rigid selective pressures on their culls.

"In the end, the cows are here to make us money. We don't tend to

carry over cows – we expect them to perform without any special treatment."

For Phil, their regular calving intervals and extreme milk solid yields across multiple lactations make the Cupids a very reliable and profitable bloodline. While he says the Cupids are "nothing fancy", they consistently show correct slope to their rumps and ideal dairy strength, and are cows that thrive in a large herd environment.

"That's the thing about the Cupids – they just don't fail," Phil says proudly, "We may never breed the ultimate 'show cow' from them, but we will breed functional cows that last – and the Cupids last so long because they're so structurally correct." **HJ**

nzholstein

Official publication of Holstein Friesian New Zealand



Subscribe NOW!

For NZ\$92

(Annual subscription, postage incl.)

Three issues per year

- Breeder Profiles
- Events
- Animal Spotlights
- Industry Issues

NAME: _____

ADDRESS: _____

CITY/PROVINCE: _____ POST CODE: _____

COUNTRY: _____

PHONE: _____ FAX: _____

EMAIL: _____

Fill in this coupon and forward with payment to:
 Holstein Friesian New Zealand
 PO Box 9282, HAMILTON 3240, New Zealand
 Enquiries: ph 0064 7 839 9957 or email r.cakebread@nzhfa.org.nz
www.nzholstein.org.nz
*Payment by bank cheque or bank draft in NZ\$ and exclusive of transaction fees.



THE NEXT GENERATION

from a two-time Master Breeder herd

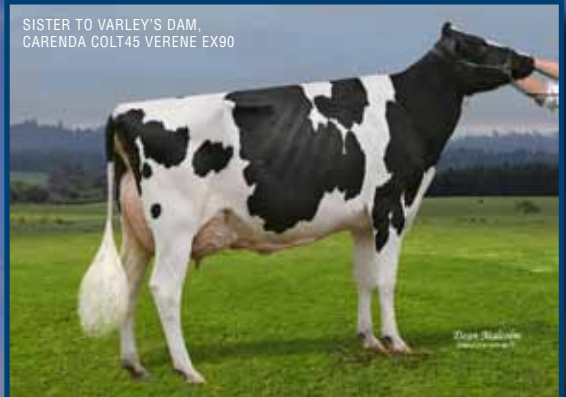
CARENDA **VARLEY** *Pemberton x Superhero*

BPI +491 | HWI +452 | C/Ease +104
Type +110 | Mammary +110 | A22

SexedUltra



SISTER TO VARLEY'S DAM
CARENDA COLT45 VERENE EX90



CarenDA Ella Vanish EX4E
|
CarenDA Rudolph Venice VG87
|
CarenDA Igniter Verna EX90
|
CarenDA Reginald Verra VG88
|
CarenDA Superhero Verlo GP84 2yrs
|
CarenDA VARLEY

Positioned in the TOP 1% of the breed for BPI, Type and Udder rankings on the Good Bulls Guide following the August 2022 ABV release. Bred by two-times Master Breeder, Carenda Farms in Western Australia, VARLEY descends from one of the leading cow families amongst the Holstein breed. Talk to your Genetics Australia representative today about securing this bull for your spring mating's.

August 2022 ABVs

2022 Holstein/Semex All-Australian Finalists

All-Australian back in business

After a disrupted couple of years, judges of the 2022 All Australian competition were delighted to be able to meet face-to-face to select this year's finalists. COVID restrictions meant the 2020 competition was judged via Zoom and the 2021 competition paused due to limited show opportunities.

This year's competition included animals that qualified during 2020/21 or 2021/22. Overall the number of entries (177) was excellent considering the stop/start nature of the show circuit during the 2 years the competition was run over due to COVID.

Returning judge, David Peglar (Sleepy Hollow, Fleurieu & Central South Australia) said judging together in the room was far better than the virtual experience. "From a judge's perspective, the All Australian is a unique and enriching experience. Judging in the traditional show ring is a solo experience. The All Australian is a rare opportunity to work collaboratively with very experienced judges," he said.

David was joined by Matt Templeton (View Fort, South Gippsland Victoria) and David Johnston (Segenhoe Park, Western Districts), who was a very much appreciated last minute selection to judge when Lisa MacKay was unavailable.

He was reassured by the consistency of views amongst the judges. "We were pretty much unanimous in our placings, which I think is a testament to the training we've all been through over the years. But I really enjoy hearing the other judges' standpoints. It's an honour to be invited to judge the All Australian," David Peglar said.

The All Australian is judged only on what is presented in the photos. The judges are not given any information on the animal – they are unaware of its name, pedigree, breeder or owner. It comes down to the quality of the animal, how it's captured in the photo to highlight its best features.

David Johnston said the judges' first impression was usually based on the quality of the photo. "Unlike a show ring, you can't walk around the cow and judge from a variety of angles. So, a photo can make or break a cow's success in the All Australian," he said.

"I looked at the placement of the legs and feet, head carriage and presentation of the head and neck. The next step is a closely examination of her conformation. The head and neck needs to be clean and dairy; legs not toeing out and depth of body and strength to the topline. And in milking cows, the most important attachment and particularly foreudder placement. Teat placement is also important but you can't always see all four teats in a photo. Finally I look at the overall bone quality of the animal – I'm looking for bone that appears wide and flat."

All judges cited two standout classes in the competition: the 3-year-olds and mature cows (6-year-olds).

The 3-year-olds was the biggest class of the competition with



Excellence in conformation and showing

The Holstein Australia/Semex All-Australian Competition is a national photography competition recognising excellence in conformation and showing. It is open to all Holstein Australia Herdbook and Appendix 1, 2 and 3 females that have been successfully shown at nominated shows throughout Australia each year. The three-member judging panel selects both the finalists and the top three places in each class.

29 entries. David Peglar described the top of this class as magnificent young cows.

"These animals are on their second lactation and represent the future of the herd. Their owners should be delighted with the quality," he said.

David said the mature cows were a challenge and a pleasure to judge, with 17 entries. "There was such depth and consistency right throughout the class. The top six were exceptional animals; they are real standout cows. Separating out the finalists and winners came down to very fine details – it was reassuring that the judges were all in agreement," he said.

Matt Templeton encouraged members to return to showing and picturing their animals with COVID restrictions over.

"In this era of social media, cow photos are a valuable tool, not just for entering the All Australian but also for promoting your reputation as a breeder and individual animals when you want to sell them," Matt said.

You'll find the finalists for each class on the following pages, with the winners published in the Summer issue of the Journal.



The 2022 All Australian judging panel: David Peglar, David Johnston and Matt Templeton – delighted to be back in the business of judging together in a room.

2022 Holstein/Semex All-Australian Finalists



Holstein
AUSTRALIA

6 YEARS & OVER



SEMEX



A **SMALLRIDGE SHADOW RAINBOW**
JADE & SCOTT SIEBEN, VIC
1st Sydney Royal 2022



B **AVONLEA STANLEYCUP CAROL**
INSTYLE HOLSTEINS, VIC
5th IDW 2022



C **MARIO PARK ATWOOD MIDAS-ET**
MURRAY POLSON, NSW
2nd VWF 2021



D **CLYDEVALE SOLOMON SUNSET-ET**
CLYDEVALE HOLSTEINS PTY LTD ATF DEE FAMILY TRUST, VIC
1st VWF 2022



E **MURRIBROOK REGINALD VICTORY-ET**
R K & J R GORDON/J H & C J GARDINER
2nd VWF 2022



F **EAGLE RIDGE AMAZING G POLLYANNA**
R K & J R GORDON, VIC
2nd VWF 2022

2022 Holstein/Semex All-Australian Finalists



Holstein
AUSTRALIA

5 YEAR OLD



SEMEX



A **CLYDEVALE SOLOMON SUNSET**
CLYDEVALE HOLSTEINS PTY LTD ATF DEE FAMILY TRUST, VIC
1st Cohuna Show 2021



B **MURRIBROOK REGINALD VICTORY-ET**
R K & J R GORDON/J H & C J GARDINER, VIC
1st VWF 2021



C **WARRAMONT DIAMONDBACK FONDUE-ET**
N & M WILKIE/SIMON WILKIE, VIC
4th IDW 2022



D **AVONLEA RIVAL RUTH**
R K & J R GORDON, VIC
1st IDW 2022



E **AVONLEA-YF DOORMAN CONNIE-ET**
R K & J R GORDON, VIC
2nd VWF 2021



F **TOMARGO RECLUSE BRAD JACKIO**
S D & E G CHESWORTH T/A CHESWORTH DAIRY P/SHIP, NSW
1st Sydney Royal 2022

2022 Holstein/Semex All-Australian Finalists



Holstein
AUSTRALIA

4 YEAR OLD



SEMEX



A **CHERRYLOCK CHASSITYS INNOCENCE-IMP-ET**
B & J GAVENLOCK, VIC
3rd VWF 2022



B **BENLARGO ELIJAH DING**
BENLARGO HOLSTEINS, SA
2nd IDW 2022



C **AROONA BEEMER DESIREE 3435-ET**
ELOORA PASTORAL CO, VIC
7th IDW 2022



D **GLOMAR HOTLINE SARAH 6200**
R JOHNSTON, VIC
2nd IDW 2022



E **KAARMONA MOGUL SHAUNA 3-IMP-ET**
B & J GAVENLOCK/MURRAY POLSON
3rd VWF 2021



F **GORBRO SOLOMON LIVIA**
R K & J R GORDON, VIC
6th IDW 2022

2022 Holstein/Semex All-Australian Finalists



Holstein
AUSTRALIA

3 YEAR OLD



SEMEX



A **CLYDEVALE SOLOMON FOXY-ET**
CLYDEVALE HOLSTEINS PTY LTD ATF DEE FAMILY TRUST, VIC
5th VWF 2021



B **STRONGBARK CANDIES UNIX**
LINSAND FARMS PTY LTD/JIM STRONG
2nd VWF 2022



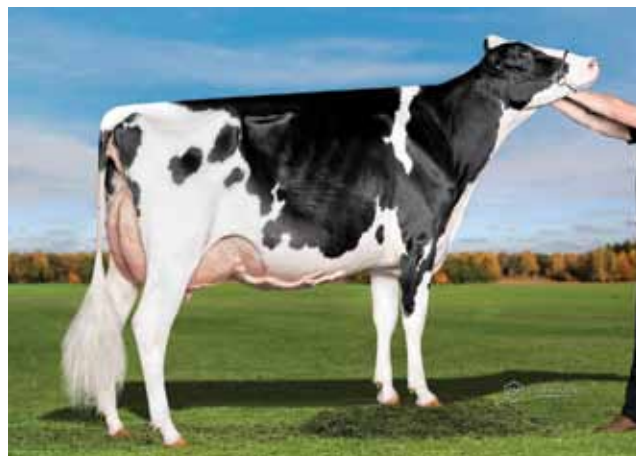
C **INSTYLE DOC AMY**
INSTYLE HOLSTEINS, VIC
3rd IDW 2022



D **QUALITY RIDGE 1STGRADE WILLA**
E,A & R ATTENBOROUGH/NATHAN HART/QUALITY RIDGE, VIC
2nd IDW 2022



E **ROWLANDS PARK CHIEF BALERTWINE-ET**
R L & T L WISHART, VIC
1st VWF 2022



F **AVONLEA UNIX ANNA 2ND-ET**
J H & C J GARDINER, VIC
1st VWF 2021

2022 Holstein/Semex All-Australian Finalists



Holstein
AUSTRALIA

2 YEAR OLD – IN MILK (OVER 30 MONTHS)



A **AVONLEA VALIDATION RITZY**
J H & C J GARDINER, VIC
3rd VWF 2021



B **CP CAPITAL CINNAMON**
INSTYLE HOLSTEINS/T K & L M NORTHFIELD
2nd VWF 2022



C **MARIO PARK KING D ALEECE-ET**
MURRAY POLSON, NSW
5th VWF 2021



D **AVONLEA TADOO DIXIE**
J H & C J GARDINER, VIC
2nd IDW 2022



E **AVONLEA CRUSHBULL ROSINA-ET**
R K & J R GORDON, VIC
3rd IDW 2022



F **BRINDABELLA DOORMAN CHERRIO**
JADE & SCOTT SIEBEN, VIC
2nd VWF 2021

2022 Holstein/Semex All-Australian Finalists



Holstein
AUSTRALIA

2 YEAR OLD – IN MILK (30 MONTHS & UNDER)



SEMEX



A **AVONLEA KINGDOC APRIL**
J H & C J GARDINER, VIC
3rd VWF 2021



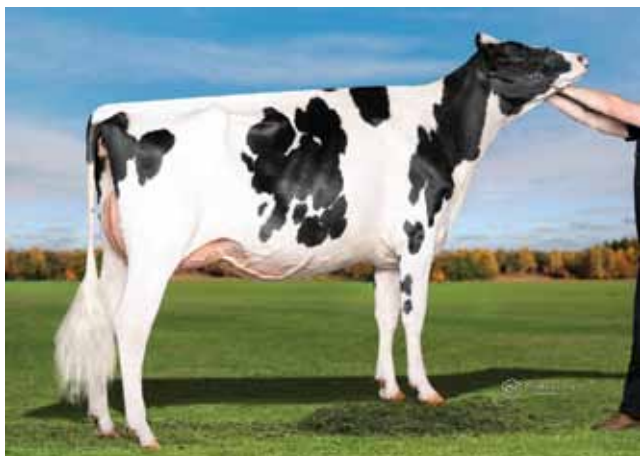
B **ELMAR CHIEF MAIDA 4329**
ELMAR HOLSTEINS, VIC
7th VWF 2021



C **MURRIBROOK SIDEKICK CYBELE**
R K & J R GORDON, VIC
1st VWF 2022



D **WESTMUIR CHIEF FROSTBITE**
MAL NIKORA/COREY COUCH/KELLY BLEIJENDAAL, VIC
4th VWF 2021



E **AVONLEA DOORMAN PRINCESS**
J H & C J GARDINER, VIC
1st VWF 2021



F **GORBROTATTOO OF SHIMMER**
R K & J R GORDON, VIC
2nd VWF 2021

2022 Holstein/Semex All-Australian Finalists



Holstein
AUSTRALIA

SENIOR YEARLING DRY (OVER 15 MONTHS)



SEMEX



A **MELINGER TATTOO HEIDI**
MELINGER PARTNERS, VIC
5th IDW 2022



B **MARIO PARK SOLOMON ALLICIA-ET**
MURRAY POLSON, NSW
1st Sydney Royal 2022



C **AROONA ARTIST MAIDA 3797**
ELOORA PASTORAL CO, VIC
3rd VWF 2022



D **WINDY VALE WARRIOR ROSE**
DECLAN L PATTEN, VIC
1st VWF 2022



E **LIGHTNING RIDGE CMD THUNDER NICO-TWIN**
MAL R NIKORA, VIC
1st VWF 2022



F **MARIO PARK CRUSHABULL FANNY**
MURRAY POLSON/CAMERON YARNOLD, NSW
1st VWF 2021

2022 Holstein/Semex All-Australian Finalists



Holstein
AUSTRALIA

SENIOR YEARLING DRY (UNDER 15 MONTHS)



SEMEX



A **KATANDRA PARK MIRAND BLYTHE-PO**
D M & L M FRY, WA
1st WA Autumn Fair 2022



B **ELMAR MIRAND FARLEX 4688-RED-PO**
WELLCOORA HOLSTEINS, VIC
2nd Noorat Show 2021



C **AVONLEA LAMBDA SPOT**
J H & C J GARDINER, VIC
2nd VWF 2022



D **TOMARGO RECLUSE SIDEKICK DEE**
S D & E G CHESWORTH T/A CHESWORTH DAIRY P/SHIP, NSW
2nd Sydney Royal 2021



E **CHERRYLOCK CHIEF PAULINE**
B & J GAVENLOCK, VIC
6th VWF 2022



F **MARIO PARK CHIEF ALICIA-ET**
CAMERON YARNOLD, NSW
1st VWF 2022

2022 Holstein/Semex All-Australian Finalists



Holstein
AUSTRALIA

ALL-AUSTRALIAN HOLSTEIN YOUTH CALF



SEMEX



A **BELRUE CHIEF ROSA**
BELRUE FARMS, VIC
2nd VWF 2022
Handler: Aisha Railton



B **ELMAR MIRAND FARLEX 4688-RED-PO**
WELLCOORA HOLSTEINS, VIC
2nd Noorat Show 2021
Handler: Abbie Hanks



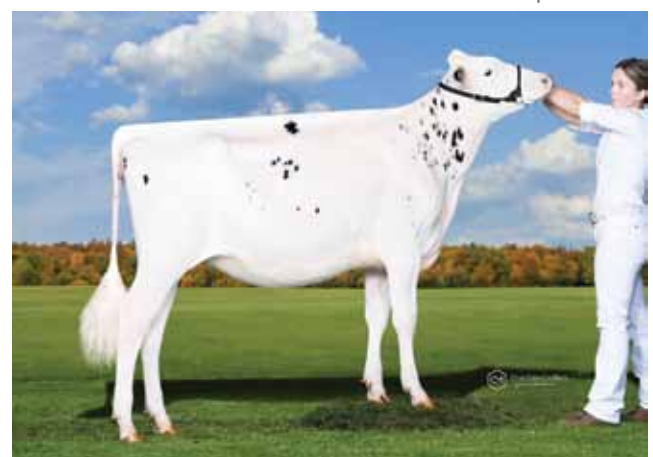
C **CAMELLIA GROVE CHIEF BUTTER**
P J & C A CASTLES, VIC
1st Heytesbury Show 2022
Handler: Amarli McKenna



D **QUALITY RIDGE SIDEKICK JANE**
QUALITY RIDGE, VIC
1st IDW 2022
Handler: Cooper Fisher



E **AVALON UNSTOPABULL MANDY-RED**
S S & C L MODRA
5th VWF 2022
Handler: Kendall Modra



F **GORBRO ARROW1ST PEACHES**
LUKE GARDINER, VIC
1st VWF 2022
Handler: Abbie Hanks

When HIGH TYPE matters...

Emu Banks **CARTEL**

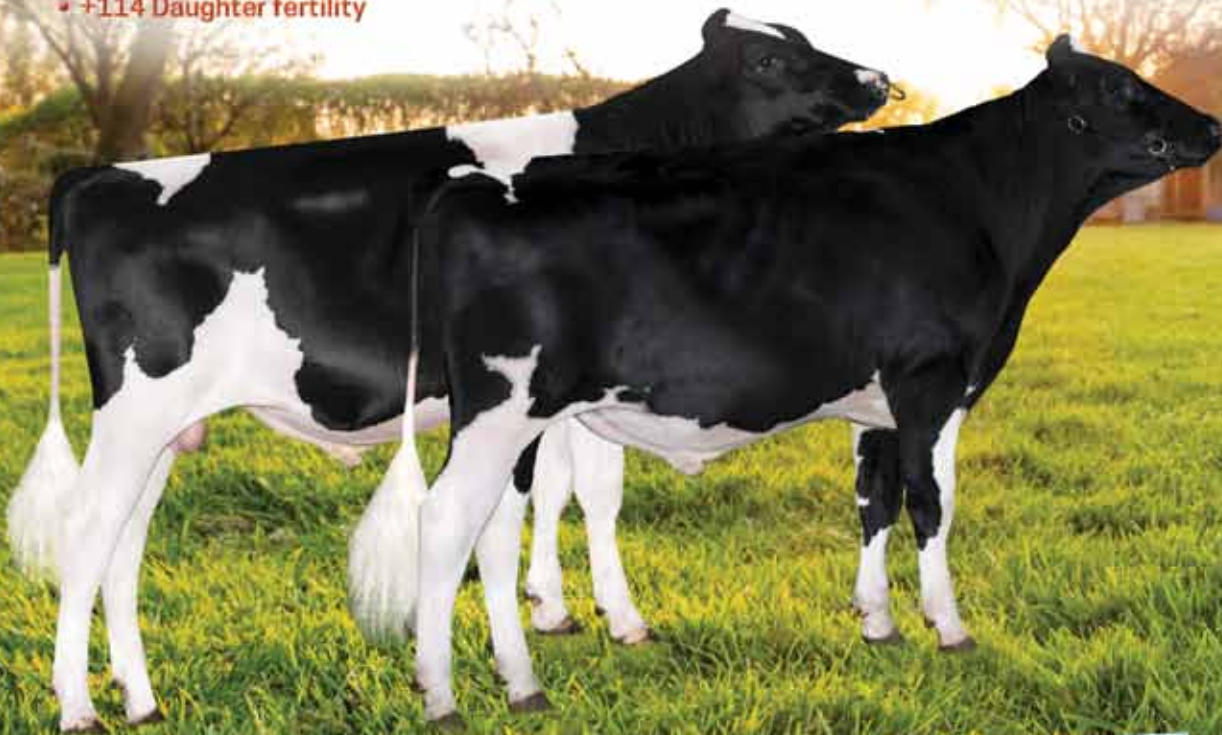
Redcarpet / Balisto

- #1 Australian standing A2A2 sire for Type
- Overall Type +114 Mammary 106
- Increased to 450 BPI and 501 HWI (08/22)
- +114 Daughter fertility

Vala Nacash **LEITH - P**

Nacash / Polar

- Popular fresh sexed semen sire A2/A2
- 2630 TPI +1.42 PTAT 409 BPI 117 D/FERT
- Combining BPI, TPI, Fertility, A2 & Polled



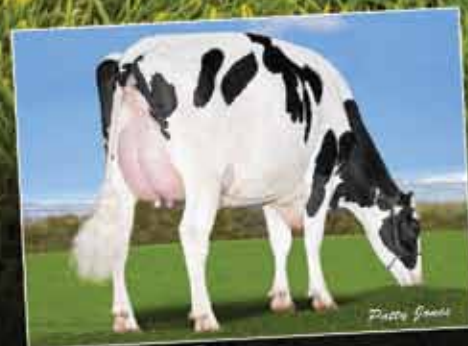
TLGCARTEL and TLGLEITH-P
Photos by Cullen Macleod

Vala 2020

EPIC - P

Vogue 2020 / Luster-P

- ❖ High TPI polled sire +2867
- ❖ +2.16 PTAT +2.16 UDC A2/A2



MGD: Silveridge Duke Elsa
Photo: Gonda

- ❖ BPI 439 HWI 432 SI 836
- ❖ Daughter Fertility +108

ALL THREE SIRES ARE AVAILABLE IN FRESH & FROZEN SEXED ULTRA 4M SEMEN

TOTAL
LIVESTOCK GENETICS

4969 Princes Hwy, Camperdown Vic 3260
Phone: 03 55 932 016 tlg@tlg.com.au www.tlg.com.au
Mobile: 0447 441 422 sales@tlg.com.au



Rockwella Holsteins

Rockwella Farm Holsteins has been in the Hurrell family since 1979 when Wes's parents Doug and Helene bought the farm at Yankalilla on South Australia's Fleurieu Peninsula.

Since taking over the farm in 2011, Wes and his wife Rita and son James have made major changes to convert what started as a small family farm, into a thriving dairy powerhouse.

Wes's passion for registered Holsteins runs deep. From when he bought his first Holsteins 37 years ago, he has been studying cow families and pedigrees, striving to develop a better cow with type and production at front of mind.

"Achieving the Master Breeder Award isn't something we have given much thought to as our focus has always been on building the strongest cow families we can," Wes said.

"But it is a great acknowledgement of the hard work we have put into our breeding over many years.

"It hasn't just been about the farming either – it is the social aspect too. We have met so many wonderful people over the years and that has been very special to us."

Rockwella Farm Holsteins is looking to consolidate its position in dairying, currently running 450 milking cows on the home farm, with another 300 milkers on a local leased property, while preparing to build an extensive barn and year-round total mixed ration (TMR) set-up.

"Whatever we do has to make money and enhance the business. We want to create a showpiece that sets us apart in the industry moving forward," he said.

Genomic testing has played a key part in their breeding plans for more than seven years to get a picture of the genetic merit of the whole cow, including health traits and workabilities.

"We'd always concentrated on BPI [Balanced Performance Index] to a certain extent. But not fully – it was about 50% and then using other bulls that might have a good type trait or show trait," Wes said. "But we've gone away from that to 100% genomics and working on BPI."

Farm facts

Females bred:

EX: 12

VG: 276

SBC: 65

Production awards: 393

Lifetime production awards: 91

Points required: 1,082

Points earned: 2,767



Rita at Wes Hurrell.

Rockwella's breeding program focuses on joining with bulls that are highly ranked for BPI, with a specific focus on type, udder conformation, sound feet and legs and capacity.

"Breeding big cows is not what we are looking for in this climate – we are focusing on soundly built cows with longevity and the ability to produce."

Genomic testing has enabled Wes and Rita diversify income from export and bull sales, particularly in a local market where they regularly supply bulls from their top cow families to local breeders.

"Genomics means we are essentially providing a 'proof' for the young bulls we sell, which means better value and return on investment," Wes said.

"We think a high BPI herd will have more value when it comes to the point of selling, whether it is bulls or heifers.

Holstein Australia services

- ✓ Registration
- ✓ Classification
- ✓ Genomics

"Everyone is chasing that top BPI heifer, or bull."

Rockwella animals regularly feature at the top of BPI listings, with notable rankings including Rockwella Farm Tirano Mandy (502 BPI) in March 2022; Rockwella Farm Tirano Judith (463 BPI) and Rockwella Farm Redcarpet Delight (439 BPI) in May 2022 and Rockwella Farm Jeronimo Belle (549 BPI) and Rockwella Farm Jeronimo Judith at (353 BPI) in August 2022.

"We used some great bulls in the early years such as Artist, Astre, GGI Belt, Goldbullion, Informer and Shottle."

Wes and Rita are aiming to have their herd ranked in the top 10 in the Australian Breeding Value release in the next five years. They also aim to have more bulls coming through progeny testing, such as Domination and Jovial who is currently with Genetics Australia.

They believe this focus on breeding will pay off in the long term.

"Genetics is the one thing we have control of. Breeding with a focus on the BPI will produce a more efficient and cost-effective animal. The benefits are not just related to income," Wes said. **HJ**

Prefix: Rockwella Farm

Member: Wes and Rita Hurrell

Location: Yankalilla, South Australia (Fleurieu & Central SA)

Years in the industry: 37 years

Farming generation: 3rd generation

Land size: 607 hectares home farm and 303 hectares leased

Cows milked: 450 on home farm and a further 300 on second leased property.

Important cow families: Ding, Jewel, The A family, Molly and Belle

Current Bull Team: Dropbox, Polaris, Tirano, Varley, Emmett, Domination, Rocknroll, Reverso, Decipher, Wifi and Cartell

First EX cow: Rockwella Farm Stardom Molly EX-90-1E



Sustainability Index will help cut emissions with genetics



Australian dairy farmers now have a breeding tool to help reduce their farm’s greenhouse gas emissions.

DataGene has introduced a new standalone breeding index called the Sustainability Index and it’s included in the August release of Australian Breeding Values.

This third Australian breeding index will fast-track genetic gain for lower greenhouse gas emission intensity.

The Sustainability Index ranks bulls according to their ability to reduce greenhouse gas emissions and increase milk production while also considering other vital profitability traits.

The Sustainability Index is one of many tools dairy farmers can use to achieve the industry’s commitment of a 30% reduction in the intensity of greenhouse gas emissions on-farm by 2030.

On-farm profitability

DataGene Stakeholder Relations Specialist, Peter Thurn, said breeding for reduced greenhouse gas emission intensity didn’t mean compromising other traits that underpin on-farm profitability.

“The Sustainability Index is highly correlated with the Balanced Performance Index (BPI); the top bulls on one, will be highly ranked on the other,” he said.

The difference is in the weighting of traits, with the Sustainability Index having triple the weighting of Feed Saved and Survival compared to the BPI (see graph).

“Looking at it from a financial perspective, the trade off in BPI over the next 25 years – if you select on the Sustainability Index instead – is about \$1 a year for Holsteins.”

There are two ways to tackle greenhouse gas emissions on a dairy farm — reduce the total or gross emissions—or reduce the emission intensity.

The Sustainability Index focuses on reducing emission intensity, that is, decreasing the amount of carbon emitted



The August edition of the Good Bulls Guide includes list of bulls ranked on Sustainability Index.

relative to milk production.

This is calculated by dividing the amount of carbon emitted by the amount of milk produced.

“The reduction in emission intensity is achieved through a combination of dilution and increased efficiency; higher milk production from longer lived, more

feed efficient cows means more milk per tonne of carbon,” Peter said.

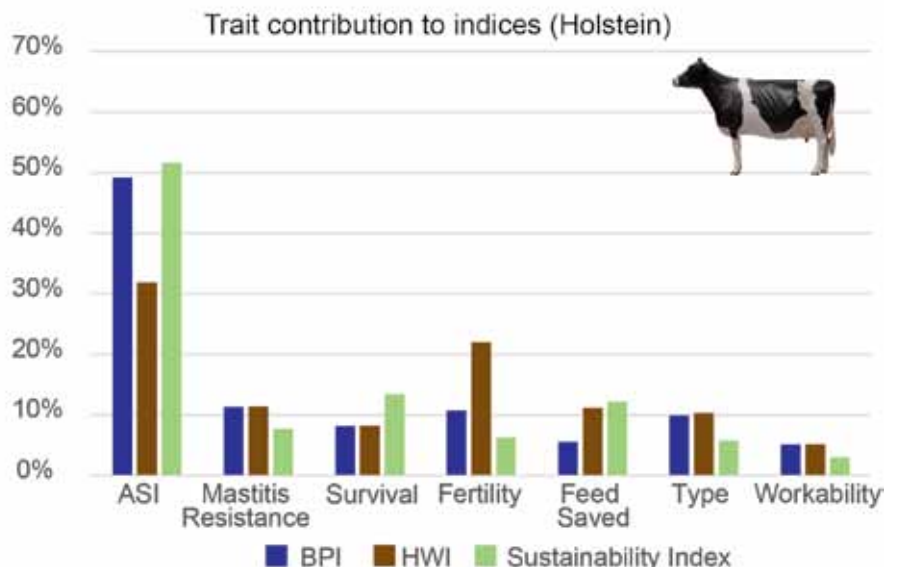
“Reducing emissions intensity is a more practical approach as it does not diminish productivity whereas a gross approach could lead to less productive and ultimately less profitable cows.”

To fast-track genetic gain for lower greenhouse gas emissions, breed replacements from animals that rank high on the Sustainability Index.

“Like any index, you can add a range of other traits to assist you to breed the type of cow you want in your herd. A good way to do this is to use DataGene’s Good Bulls App or DataVat (datavat.com.au),” Peter said.

Holstein Australia CEO, Rohan Butler said the Sustainability Index offers members a great opportunity.

“An index with greater emphasis on survival is consistent with the breeding philosophy of many of our members,” Rohan said. “And breeding cows that are more greenhouse gas efficient will be good for both environmental and business sustainability.”



The Sustainability Index has triple the weighting of survival and feed saved, compared with the Balanced Performance Index.



Top bulls (BPI)

Bull ID	Bull Name	Genetic Codes	Source	BPI \$	BPI Rel	ASI	ASI Rel	No. Dtrs	No. Herds	Over Type	Type Rel	Mam Syst	Survival	Dtr Fert	Feed Saved	Calving Ease	Mastitis Resistance
7H013981	SANDY-VALLEY BD FREEBORN-ET	A22	WWS	557	72	203	79			101	73	106	112*	111	23	100*	112
TOMMYDEE	HINDLEETOMMY/DEE 20 10-ET	A22,CNFPDFBLF	GAC	556	66	230	77	0	0	99	62	102	110	113	25	104	112
0200H012176	PROGENESIS POLARIS	A12	SEM	551	63	213	76	0	0	109	57	108	115	111	-183	104	109
011H012157	PEAK ALTALAWSON-ET	A22	ALT	537	69	327	75			103	73	100	111*	107	-118	101*	106
29H018698	ABS JERONIMO-P-ET	A22,POC	ABS	535	90	229	97	288	39	99	95	98	111	110	-48	101	108
29H020714	BOMAZ WATSON-ET	A22	ABS	534	63	231	76	0	0	103	57	103	111	115	-79	103	108
SUPERDAVE	WARRAMONT SUPERHERO DAVE-ET	A22	GAC	533	70	321	75	26	12	105	72	103	108	104	-115	102	108
29H020617	BOMAZ WISTERIA-ET	A22	ABS	531	63	262	76	0	0	98	56	101	111	112	-102	103	109
29H018863	DENOVO 14520 AMSTEL-ET	A12	ABS	525	69	249	79			102*	64	105*	111*	113	-117	104*	106
STGHOLLYWOOD	WELCOME-TEL TO HOLLYWOOD	A22	SXT	525	63	240	76	0	0	97	56	103	111	112	-7	103	108
VIKASCARI	VH TIRSVAD ALBERTA ASCARI	A22	WIK	521	64	205	77	0	0	103	58	101	112	118	-6	104#	105
29H020549	PINE-TREE DENOVO ALEO-ET	A22	ABS	517	62	197	76	0	0	99	54	105	112	113	-11	106	111
0200H012399	KINGS-RANSOM DROPBOX-ET	A22	SEM	516	63	174	77	0	0	101	56	107	113	115	-128	104	112
0200H011279	PROGENESIS POLAROID	A22	SEM	516	67	170	78	0	0	101	64	101	114	117	-46	104#	109
BOLTI	VALA ANDREAS BOLTI-ET	A22,POC	AGR	514	64	181	77	0	0	102	58	104	115	112	33	103	105
KARAT	KAARMONA DIAMOND-ET	A12	GAC	510	66	148	78	0	0	103	62	109	112	117	-66	102	110
0200H011386	WESTCOAST REVERSO	A22	SEM	510	67	141	77	0	0	105	63	102	114	117	16	101#	109
011H012161	PEAK ALTAAROLDIS-ET	A22	ALT	509	79	271	92	90	13	106	74	104	110	110#	-94	103	103
0200H011749	PROGENESIS PROCEED	A22,CVC	SEM	509	66	196	77	0	0	108	62	107	112	114	-132	100	108
STGWARD	PINE-TREE WIM WARD-ET	A22	SXT	508	64	282	77	0	0	103	59	103	110	110	-144	104	105
7H015807	LAPS-ACRES GEORGE MILLER-ET	A12	WWS	508	61	198	74	0	0	99	53	99	111	113	28	102	111
CINDERMAN	KIRK ANDREWS CINDERMAN	A12	GAC	508	69	179	79	0	0	107	67	107	113	113	-76	101	108
0200H011385	WESTCOAST RIVER	A22	SEM	508	67	149	77	0	0	102	63	101	113	118	26	103	109
7H014174	OCD ALLTIME LATROBE-ET	A12	WWS	506	68	201	75			100	64	105	111*	112	1	104*	108
011H015783	WINSTAR ALTAREGULUS LT 63074-ET	A22	ALT	506	64	235	76	0	0	99	57	98	110	114	-161	102	110
011H012285	AARDEMA ALTANIME-ET	A22	ALT	505	67	291	75			105	64	108	108*	106	-72	104	104
011H015510	PEAK ALTAYODEL-ET	A12	ALT	504	64	213	76	0	0	101	58	100	114	113	-156	103	110
0200H011284	PROGENESIS POWERHOUSE	A12	SEM	503	68	201	78	0	0	100	65	105	113	108	-31	101	109
TALKING	REDMAW KEEPER TALKING 88	A22,CNFPDFBLF	GAC	503	66	177	78	0	0	104	61	104	112	113	8	102	109
7H015770	S-S BR TAOS ULYSSES-ET	A12	WWS	502	62	236	75	0	0	98	54	102	110	111	-67	102	109



Top Bulls (Overall Type)

Bull ID	Bull Name	Genetic Codes	Source	BPI \$	BPI Rel	ASI	ASI Rel	No. Dtrs	No. Herds	Over Type	Type Rel	Mam Syst	Survival	Dtr Fert	Feed Saved	Calving Ease	Mastitis Resistance
0200H007920	VILLY SILVIO	A22	SEM	360	79	84	88	54	17	115	74	113	112	110	-69	103	101
0200H010660	STANTONS ADORABLE	CVF,BLF,A12	SEM	389	82	119	89	50	14	114	80	108	113	109	-127	103	103
TLGCARTEL	EMU BANKS CARTEL-CNF-DPF-BLF	A22	TLG	450	66	123	77	0	0	114	62	106	110	114	-41	104	109
0200H010890	LEGEND-MAKER VICTOR	A22	SEM	378	74	130	78			113	81	107	112	108	-77	99	104
DECIPHER	CALLISTER DECIPHER	A22	GAC	507	67	176	78	0	0	112	64	111	111	113	-9	100	108
GGIKONTEX	HAS KONTEX	A22	GGI	430	70	220	75			112	76	110	112	102	-125	103	105
29H017459	HOGERHORST DG OH RUBELS RED	A12,RDC	ABS	415	69	145	79	7	5	112	65	109	111	109	-89	101	105
0200H010894	WESTCOAST SCOTCH	A22,BLF,CVF	SEM	377	71	60	75			112	75	107	111	114	-127	104	109
011H011813	PEAK ALTAIDOHOT	A12,BLF,CVF	ALT	400	82	135	91	69	11	111	75	111	112	107	-146	102	105
0200H010992	WALNUTLAWN SIDEKICK	A22,CVF	SEM	301	86	50	95	157	31	111	92	109	111	106	-101	102	108
VARLEY	CARENDA VARLEY	A22,CNF,DPF,BLF	GAC	491	67	231	77	0	0	110	63	110	110	109	-124	104	105
0200H007956	3STAR OH RANGER RED-ET	A12,RDC	SEM	432	63	117	77	0	0	110	57	104	114	110	-37	103	107
7H015825	BOSSIDE RUBEL REBEL-RED-ET	A22,RDC	WWS	416	65	119	77	0	0	110	60	107	111	115	-107	101	104
AGRDYLAN	KINGS-RANSOM G DYLAN-ET	A12	AGR	395	73	154	81			110	77	113	111	108	-148	103	105
MICHALAK	MICHALAK	A12	AGR	387	74	103	81			110	77	105	110	113	-18	101	106
7H012724	T-SPRUCE SUPRSHT WIGGINS	A22	WWS	379	83	156	90	56	16	110	85	107	111	107	-125	103	104
CBROBINRED	KOEPON OH ROBIN RED	A11,RDC	SXT	344	64	93	77	0	0	110	58	105	112	109	-159	103	106
0200H010641	WESTCOAST RANDALL	A12	SEM	325	76	73	81			110	80	108	109	107	-159	102	109
CRVHOTLINE	PEAK HOTLINE	A22	CRV	327	82	195	92	79	10	109	77	110	106	103	-192	103	104
SECRETARIAT	ALL.NURE SECRETARIAT	A22	GAC	316	82	53	90	70	16	109	78	106	110	106	-49	102	107
011H015202	PEAK ALTAFLASHBACK-ET	A22	ALT	463	66	203	77	0	0	109	61	108	111	109	-104	101	106
JOVIAL	ROCKWELLA FARM JOVIAL-CNF-DPF	A11	GAC	438	69	273	78	0	0	109	66	112	108	102	-19	103	98
011H012211	PEAK ALTAVELVET-ET	A22	ALT	402	70	188	75			109	76	107	106	103	-234	102	114
TLGBOUJANCY	COOMBOONA SUPERSHOT BOUJANCY-IMP-ET	P0C,RDC	TLG	396	79	132	90	70	17	109	66	107	110	112	-100	103	105
94H020248	JBTULLEC THE ALPS	A22	ABS	378	66	143	77	0	0	109	63	113	111	106	-171	104	106
0200H010549	SILVERRIDGE V EUGENIO	A22	SEM	332	72	66	75			109	78	107	114	108	-198	102	105
SILVERLINE	GLOMAR SILVER 1717-ET	A12,BLF,CNF,DPF	GAC	319	93	257	99	886	96	109	98	114	106	96	-118	101	99
0200H012176	PROGENESIS POLARIS	A12	SEM	523	64	199	76	0	0	108	60	106	115	111	-179	104	108
0200H011749	PROGENESIS PROCEED	A22,CVC	SEM	503	67	182	77	0	0	108	63	107	112	115	-128	101	107
CINDERMAN	KIRK ANDREWS CINDERMAN	A12	GAC	501	69	164	79	0	0	108	66	107	113	114	-98	101	108
WIFI	HINDLEE WIFL-ET	A12	GAC	470	68	223	78	0	0	108	65	107	110	107	-124	104	107



Top Females (BPI)

Name	HBN	Owner Name	Sire	DOB	BPI	BPI Rel	ASI	Protein	Protein %	Milk	Fat	Fat %	Overall Type	Mammary System	Survival	Survival Rel	Mastitis Resistance	Somatic Cell	Fertility	Feed Saved	Heat Tolerance
CARENDA JERONIMO VIDA-CNF-DPF-XIF-BLF-PO	2093685	KITCHEN FARMS	JERONIMO	27/08/2019	611	68	360	21	0.76	-701	67	1.4	102	104	109	57	102	168	110	49	95
CARENDA JERONIMO VISTA-CNF-DPF-XIF-BLF-PO	2075833	KITCHEN FARMS	JERONIMO	2/06/2019	586	68	268	8	0.6	-885	57	1.36	107	103	110	57	108	186	112	-56	95
DILEE JERONIMO OLLIE 277	2068227	DILEE HOLSTEINS	JERONIMO	13/03/2019	581	72	301	21	0.68	-554	47	1.02	100	98	109	59	107	175	112	-12	96
WILARA JERONIMO LOLLIE-CNF-DPF-XIF-BLF-PO	2090331	W E & M J & T W HENRY	JERONIMO	23/08/2019	579	70	323	24	0.66	-388	55	1.04	103	104	110	56	106	175	112	-155	91
HINDLEE JERONIMO PB DALLAS 19004-ET-CNF-DPF-XIF-BLF	2076910	J M & V LILLICO	JERONIMO	19/02/2019	577	67	263	29	0.48	148	39	0.48	102	102	111	57	107	178	115	-122	93
CURRA JUGLE JERONIMO GOLDEN 2906-CNF-DPF-XIF-BLF	2085003	K N & S K JOLLIFFE	JERONIMO	21/06/2019	571	69	244	12	0.49	-495	51	1.04	102	102	112	59	106	179	115	-61	95
JELBART JERONIMO 16096-CNF-DPF-BLF	2128687	JELBART DAIRY PTY LTD	JERONIMO	24/04/2020	568	68	319	17	0.76	-872	53	1.31	106	105	110	57	104	165	107	-33	98
WILARA JERONIMO JORDA-CNF-DPF-XIF-BLF-PO	2090330	W E & M J & T W HENRY	JERONIMO	22/08/2019	568	72	317	22	0.66	-473	56	1.09	100	100	111	60	103	175	112	-73	93
CYPRESS GROVE V4 JERNIMY TIFFANY-ET-CNF-DPF-XIF-BLF	2073415	JONES FAMILY	JERONIMO	16/03/2019	565	73	299	10	0.93	-1454	34	1.39	103	100	109	60	104	171	112	12	97
EMU BANKS JERONIMO CENTREPIECE 1223	2102628	B J & J L DICKSON	JERONIMO	19/07/2019	564	69	309	15	0.66	-764	61	1.34	104	105	110	58	106	181	109	-118	96
JELBART JERONIMO ROXANE 15905-CNF-DPF-BLF	2128683	JELBART DAIRY PTY LTD	JERONIMO	28/03/2020	564	67	205	9	0.41	-467	45	0.93	98	102	112	56	107	184	117	27	94
KARMONA JERONIMO DEO-CNF-DPF-XIF-BLF-PO	2083954	GRAEME SPRUNT	JERONIMO	26/04/2019	551	68	305	14	0.54	-555	72	1.38	102	100	108	57	108	190	106	-14	93
ROCKWELLA FARM JERONIMO BELLE-CNF-DPF-XIF-BLF	2100778	ROCKWELLA FARM HOLSTEINS	JERONIMO	15/08/2019	549	68	304	14	0.73	-903	53	1.31	103	102	109	56	108	181	108	-141	96
CARENDA JERONIMO ALANNAH	2093670	KITCHEN FARMS	JERONIMO	18/08/2019	543	68	273	28	0.45	149	48	0.6	105	104	109	57	107	201	110	-145	99
JELBART JERONIMO 15890-CNF-DPF-BLF	2128686	JELBART DAIRY PTY LTD	JERONIMO	26/03/2020	542	67	236	22	0.44	-58	40	0.61	97	101	109	56	105	177	118	-5	92
HINDLEE JERONIMO PB DALLAS 19007-ET-CNF-DPF-XIF-BLF	2076913	J M & V LILLICO	JERONIMO	23/02/2019	541	67	299	22	0.59	-350	55	1.01	98	98	111	56	104	169	111	-69	93
KINLORA FEDORA FRANCES 5076	2088810	J & K PEKIN	FEDORA	9/04/2019	539	68	231	11	0.5	-564	45	1	100	102	111	58	109	189	112	-12	92
EASTERN STAR WOOKIE PLACE	2099764	DAMIEN & EBONY HENRY	WOOKIE	25/08/2019	537	67	380	28	0.81	-531	63	1.23	99	98	108	57	104	163	108	-207	94
EMU BANKS JERONIMO CAROL 1279	2102631	B J & J L DICKSON	JERONIMO	16/08/2019	536	69	279	20	0.58	-370	48	0.92	100	99	111	58	104	173	110	-27	96
NUMERALLA DELTA 1427 6160-CNF-DPF-XIF-BLF	2060501	NUMERALLA	DELISHDELTA	30/10/2018	536	71	346	20	0.59	-437	80	1.42	103	105	109	59	104	150	107	-85	91
ECLIPSE HUMBLE DANCER III-IMP-ET-CNF-DPF-BLF	2114701	B J & J L DICKSON	HUMBLEKIND	10/04/2019	535	67	233	11	0.41	-390	55	1.03	106	109	112	58	108	163	110	-65	94
EMU BANKS JERONIMO SONIA 1246	2102632	B J & J L DICKSON	JERONIMO	25/07/2019	526	69	279	28	0.48	88	48	0.64	102	103	108	58	108	183	109	-87	90
HINDLEE JERONIMO LOYALTY 20057	2114209	J M & V LILLICO	JERONIMO	16/03/2020	525	68	203	22	0.46	-70	21	0.35	97	94	111	57	107	186	117	84	98
EMU BANKS DELTALAMBDA TIFFANY 11317-ET	2127508	B J & J L DICKSON	DELTALAMBDA	5/09/2019	524	68	349	30	0.52	102	75	1.03	105	109	109	60	103	138	102	-72	95
HINDLEE JERONIMO GC DREAM 19096-ET-CNF-DPF-XIF-BLF	2098041	J M & V LILLICO	JERONIMO	3/08/2019	524	69	279	9	0.62	-887	58	1.38	100	94	111	59	104	183	111	-43	99
ILLAWAMBRA RIVER SLEEPY 3950-CNF-DPF-BLF	2110430	T J & L R PARRISH	RIVER	7/04/2020	524	64	231	19	0.52	-325	34	0.68	97	93	109	51	110	175	116	31	97
IVYHURST MAEBULL ASSISI	2061535	A P & C M SEBIRE	MAEBULL	11/08/2018	524	69	284	26	0.65	-297	35	0.69	108	105	108	63	104	178	109	16	94
ROCKWELLA FARM JERONIMO JUDITH-CNF-DPF-XIF-BLF	2100823	ROCKWELLA FARM HOLSTEINS	JERONIMO	17/09/2019	524	67	266	7	0.6	-917	56	1.38	101	101	109	55	106	176	111	-29	97
IVYHURST WRANGLER MYSTERY 6194-OC	2099988	A P & C M SEBIRE	WRANGLER	8/03/2017	523	69	336	14	0.83	-1121	58	1.52	99	95	103	64	105	160	115	42	97
CYPRESS GROVE V2 JERONIMO TIFFANY-ET-CNF-DPF-XIF-BLF	2073413	JONES FAMILY	JERONIMO	14/03/2019	522	73	309	18	0.8	-898	42	1.16	101	97	109	60	102	167	110	-41	97
EMU BANKS KARAT CENTREPIECE 13075-ET-CNF-DPF-BLF	2189966	B J & J L DICKSON	KARAT	13/03/2022	518	65	140	5	0.24	-303	36	0.71	105	108	111	51	109	194	119	-2	98



Top Females (Sustainability Index)

Name	HBN	Owner Name	Sire	DOB	BPI	BPI Rel	SI	SI Rel	ASI	Protein	Protein %	Milk	Fat	Fat %	Overall Type	Mammary System	Survival	Survival Rel	Mastitis Resistance	Somatic Cell	Fertility	Feed Saved	Heat Tolerance	
JELBART ALLTIME 14116-CNF-DPF-XIF-BLF	2128733	JELBART DAIRY PTY LTD	ALLTIME	21/03/2018	513	68	1098	66	389	46	0.71	331	53	0.57	95	96	104	61	104	104	143	108	-51	90
WILARA BUDDHA STEPH	1858109	W E & M J & T W HENRY	BUDDHA	15/08/2013	442	70	1060	67	330	41	0.54	486	49	0.41	98	98	102	65	105	105	139	101	178	98
WILARATERRAINE COLLETTE	2181623	W E & M J & T W HENRY	TERRAINE	7/08/2019	511	67	1059	64	343	42	0.69	207	39	0.44	98	102	108	57	102	102	152	109	-79	92
CARENDA JERONIMO VIDA-CNF-DPF-XIF-BLF-PO	2093685	KITCHEN FARMS	JERONIMO	27/08/2019	611	68	1052	65	360	21	0.76	-701	67	1.4	102	104	109	57	102	102	168	110	49	95
HINDLEE JERONIMO PB DALLAS 19004-ET-CNF-DPF-XIF-BLF	2076910	J M & V LILLICO	JERONIMO	19/02/2019	577	67	1031	64	263	29	0.48	148	39	0.48	102	102	111	57	107	107	178	115	-122	93
WILARA PERSEUS JO-CNF-DPF-XIF-BLF	2051798	W E & M J & T W HENRY	PERSEUS	28/09/2018	492	72	1012	68	313	34	0.59	122	46	0.58	94	95	107	60	103	103	160	109	24	90
EMU BANKS DELTALAMBDA TIFFANY 11317-ET	2127508	B J & J L DICKSON	DELTALAMBDA	5/09/2019	524	68	1003	65	349	30	0.52	102	75	1.03	105	109	109	60	103	103	138	102	-72	95
EMU BANKS PERSEUS LUCY 11469	2112932	B J & J L DICKSON	PERSEUS	4/03/2020	441	68	999	65	241	39	0.21	1028	44	0	100	103	108	60	103	103	167	110	-33	93
PURNIM SEVILLE BIOSMA 5051-CNF-DPF-XIF-BLF	2051249	PURNIM HOLSTEINS	SEVILLE	23/05/2018	443	69	998	66	291	37	0.43	516	48	0.38	101	99	108	62	101	101	140	106	15	96
HINDLEE JERONIMO LOYALTY 20057	2114209	J M & V LILLICO	JERONIMO	16/03/2020	525	68	992	64	203	22	0.46	-70	21	0.35	97	94	111	57	107	107	186	117	84	98
GORBRO UNONUMERO TIFFANY-ET	1759860	R K & J R GORDON	NUMEROUNO	12/04/2013	489	77	990	74	376	36	0.58	182	74	0.96	107	106	106	70	101	101	130	99	-44	94
DILEE JERONIMO OLLIE 277	2068227	DILEE HOLSTEINS	JERONIMO	13/03/2019	581	72	983	69	301	21	0.68	-554	47	1.02	100	98	109	59	107	107	175	112	-12	96
CARENDA MASTERMIND FANDANGO-CNF-DPF-XIF-BLF	2093737	KITCHEN FARMS	JSMASTERMIND	24/09/2019	418	68	978	65	211	40	0.16	1168	34	-0.23	103	111	107	59	104	104	177	103	-17	90
BRENTLIA HUMBLENKIND WAVES 2610-ET	2087146	W R & B G ANDERSON	HUMBLENKIND	13/02/2019	456	68	970	65	205	32	0.22	745	36	0.06	97	101	107	58	106	106	167	112	70	97
EMU BANKS LAMBDA LORI 9916	2118754	B J & J L DICKSON	DELTALAMBDA	23/03/2019	423	69	969	66	291	36	0.39	585	52	0.4	103	104	106	60	102	102	131	103	31	96
CARENDA HOTSPOT 910-CNF-DPF-BLF-PO	2121931	KITCHEN FARMS	GGHOTSPOT	20/06/2020	486	68	968	65	176	28	0.25	552	23	-0.01	97	104	112	57	108	108	177	114	-60	95
VALA BANDARES BOLIANA-ET-PF	2051960	VALA HOLSTEINS	BANDARES	20/07/2018	478	70	968	67	188	24	0.25	391	34	0.25	97	103	112	60	104	104	167	111	51	92
WILARA JERONIMO JORDA-CNF-DPF-XIF-BLF-PO	2090330	W E & M J & T W HENRY	JERONIMO	22/08/2019	568	72	966	69	317	22	0.66	-473	56	1.09	100	100	111	60	103	103	175	112	-73	93
JELBART LORD 15837-CNF-DPF-BLF	2128684	JELBART DAIRY PTY LTD	LORD	19/03/2020	459	66	962	63	216	35	0.18	955	39	-0.02	99	106	108	56	105	105	168	112	-38	91
EASTERN STAR SUPERDAVE LORETTO-CNF-DPF-BLF	2099785	DAMIEN & EBONY HENRY	SUPERDAVE	1/12/2019	476	67	957	64	340	40	0.63	252	47	0.53	107	105	109	57	101	101	158	105	-218	94
EMU BANKS JERONIMO SONIA 1246	2102632	B J & J L DICKSON	JERONIMO	25/07/2019	526	69	956	65	279	28	0.48	88	48	0.64	102	103	108	58	108	108	183	109	-87	90
IVYHURST MAEBULL ASSISI	2061535	A P & C W SEBIRE	MAEBULL	11/08/2018	524	69	955	66	284	26	0.65	-297	35	0.69	108	105	108	63	104	104	178	109	16	94
JELBART JERONIMO 15824-CNF-DPF-BLF	2128740	JELBART DAIRY PTY LTD	JERONIMO	18/03/2020	502	68	953	64	203	24	0.37	157	29	0.32	103	100	109	57	107	107	185	111	45	93
WILARA JERONIMO TAMMY-CNF-DPF-XIF-BLF	2090327	W E & M J & T W HENRY	JERONIMO	7/08/2019	508	72	952	68	298	29	0.46	153	58	0.75	99	98	110	58	102	102	167	110	-100	92
GLOMAR ALTAGLOW 1956-PF-CNF-DPF-BLF	2144185	G C & P J MILLAR	ALTAGLOW	1/01/2021	476	65	951	62	255	32	0.38	433	41	0.33	95	98	109	51	106	106	168	112	-56	92
WILARA JERONIMO LOLIE-CNF-DPF-XIF-BLF-PO	2090331	W E & M J & T W HENRY	JERONIMO	23/08/2019	579	70	950	66	323	24	0.66	-388	55	1.04	103	104	110	56	106	106	175	112	-155	91
ROCKWELLA FARM PERSEUS JEWEL-ET	2026686	ROCKWELLA FARM HOLSTEINS	PERSEUS	20/02/2018	487	69	950	66	282	29	0.45	203	52	0.62	105	104	107	61	101	101	166	109	7	102
EMU BANKS JERONIMO CAROL 1279	2102631	B J & J L DICKSON	JERONIMO	16/08/2019	536	69	948	66	279	20	0.58	-370	48	0.92	100	99	111	58	104	104	173	110	-27	96
HINDLEE JERONIMO PB DALLAS 19008-ET-CNF-DPF-XIF-BLF	2076914	J M & V LILLICO	JERONIMO	25/02/2019	508	67	948	64	238	26	0.47	34	32	0.44	96	97	111	55	106	106	176	113	-58	91
ECLIPSE HUMBLENKIND DANCER-IMP-ET-CNF-DPF-BLF	2090098	B J & J L DICKSON	HUMBLENKIND	19/02/2019	443	67	948	64	129	26	0.03	895	25	-0.18	101	107	114	58	107	107	165	110	16	99
CARENDA JERONIMO ALANNAH	2093670	KITCHEN FARMS	JERONIMO	18/08/2019	543	68	946	64	273	28	0.45	149	48	0.6	105	104	109	57	107	107	201	110	-145	99

Top Holstein Australia Member Herds (BPI\$)

Owner	Prefix	Location	Rank Profit (BPI)	Average BPI
Wagner G	Rengaw	Bridport	1	264
DICKSON BJ & JL	Emu Banks	Terang	2	258
WINTER BL	Winaview	Warragul South	3	252
KITCHEN FARMS	Carenda	Boyanup	4	251
SPRUNT RG	Kaarmona	Kaarimba	5	239
ANDERSON WR & BL	Bundalong	Kongwak	6	234
HENRY TW & TC	Wilara	Tinamba	7	230
IRELAND JARED & COURTNEY	Redmaw	Lockington	8	229
LISTER CRAIG A	Calister	Calivil	9	227
HOEY DM & L	Beulah Park	Wonthaggi	10	226
GLEESON JONATHON	Gleestar	Tarrone	11	224
HOGG AL & JM	Adlejama	Biggara	12	221
ECCLES AT & WJ	Purnim	Purnim	13	200
FRASER C E	Kinlora	Kolora	15	197
PEKIN JG & KM	Jelbart	Leongatha South	17	195
JELBART DAIRIES PTY LTD	Thapsus	Coorimungle	17	195
PERRY CATTLE PTY LTD	Hindlee	Smithton	19	190
Lillico JM & V	Dilee	Leongatha South	19	190
WHITE KL & DM & RL	Gundowring	Gundowring	21	186
HOLLOWAY ID & AM	Rockwella Farm	Yankalilla	23	183
ROCKWELLA FARM - HURRELL	Daybreaker	Nirranda South	25	182

Top Holstein Australia Member Herds (HWI)

Owner	Prefix	Location	Rank Profit (BPI)	Average BPI
WINTER BL	Winaview	Warragul South	1	256
Wagner G	Rengaw	Bridport	2	253
KITCHEN FARMS	Carenda	Boyanup	3	238
DICKSON BJ & JL (EASVD)	Emu Banks	Terang	4	234
GLEESON JONATHON	Gleestar	Tarrone	6	231
ANDERSON WR & BL	Bundalong	Kongwak	7	225
IRELAND JARED & COURTNEY (EASVD)	Redmaw	Lockington	8	224
LISTER CRAIG A (MOFW5)(GINFO)	Calister	Calivil	10	212
SPRUNT RG (EASVD)	Kaarmona	Kaarimba	11	211
JELBART DAIRIES PTY LTD (GINFO)	Jelbart	Leongatha South	13	205
FULLERTON P & J (MOFW5)	Daybreaker	Nirranda South	16	198
HENRY TW & TC (GINFO)	Wilara	Tinamba	17	197
PERRY CATTLE PTY LTD	Thapsus	Coorimungle	18	196
DONOVANS DAIRYING CO. (EMAIL)	Donovans	Wye	19	195
HOEY DM & L (2) (MOFW5)	Beulah Park	Wonthaggi	24	187
ROCKWELLA FARM - HURRELL(GINFO)	Rockwella Farm	Yankalilla	29	184
Lillico JM & V	Hindlee	Smithton	37	179
ECCLES AT & WJ (DPLAN)	Purnim	Purnim	39	178
PEKIN JG & KM (EASVD) (GINFO)	Kinlora	Kolora	47	172
WHITE KL & DM & RL	Dilee	Leongatha South	47	172
HOLLOWAY ID & AM (EASVD)	Gundowring	Gundowring	47	172



What's new in the August ABV release

The August ABV release includes a number of initiatives that will be welcomed by Holstein breeders.

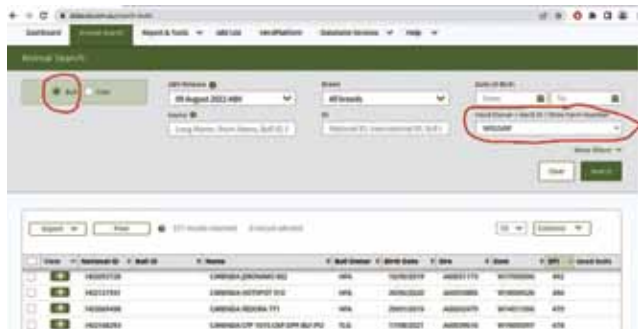
Most notable is the first release of the Sustainability Index, offering dairy farmers a breeding tool to add to their management kit for reducing greenhouse gas emissions on their farms. The Sustainability Index does not replace BPI or HWI but is an important additional tool to use when selecting bulls that best suit your breeding goals. For more information about the Sustainability Index refer page 41.

DataGene has released an updated version of the Good Bulls App which includes the Sustainability Index, is faster and has a new look. Download from the App store or Google Play.

As with every ABV run, there are changes due to addition of extra milking daughters both in Australia and overseas, and improvements in methods of calculations for certain traits. This run follows the addition of more than 8,000 Holstein in the breed's genomic reference population. This means improved reliabilities, with the biggest improvement seen in the Fertility ABV.

The Mastitis Resistance calculation has also been refined. After this one-off change, animals will have a more consistent Mastitis Resistance ABV from one run to the next. For most animals, the change in Mastitis Resistance ABV was within two points, but a small number of animals changed by as much as 6 or 7 points in either direction.

Another useful development with the August ABV release is that farmers can now view their bull's genomic results on DataVat. Genomic service providers can link bulls to herd by entering the herd's National ID into the bull record. This will also facilitate the transfer of bulls between herds as they are sold. A group of 8500 bulls have been matched to their herds to create a starting point that will be built on over time.



Bull owners can now view their bulls' genomic results on DataVat, as shown in the screenshot from the Kitchen family (Carendra Holsteins, WA).



JERONIMO P dominates the field

ABS JERONIMO P is the sire of 16 of 17 of the nation's top ranked Holstein cows, on the Balanced Performance Index (BPI) in the latest ABV release. The exception – at #14 – was out of a JERONIMO P cow by another ABS sire Bomaz EPISODE.

ABS Australian Business Operations Manager Bruce Ronalds said the August ABV release was “history in the making”. “This has never happened before, one sire with more than 500 milking daughters making such a mark on the profitability of Australian dairy herds,” he said. “We thought he'd achieved amazing things when, as a young genomic sire, he'd bred 40% of the top 100 Australian females. I can safely say now, from a profit perspective, JERONIMO P is ABS Australia's most successful sire in the past two decades. He's eclipsed one of the all-time farmer favourites, MVP. That is massive.”

JERONIMO P, known for his health traits, polled gene and productivity, broke genomic records as a young bull and just ticked over 12 months on top of Australia's proven bull ABV rankings. Boyanup, WA, Holstein breeders Ray and Donna Kitchen, with sons Doug and Sam, bred Australia's #1 and #2 cows, both sired by JERONIMO P. They have 30 first and second lactation JERONIMO P daughters in their herd of 400. Many of these animals received a VG classification as heifers with a number scored 85 points or higher.

“Most dairy farmers are trying to achieve what these animals have: good profitability and good health traits, coupled with good conformation,” Ray said. “The two highest cows also have the polled gene which is good news for future progeny.”

Number 1 cow Carenda Jeronimo Vida has a BPI\$ of 611, while #2 Carenda Jeronimo Vista is 586 BPI\$. Both are about to calve for the second time. Vida is classified 83 points and Vista 84 points.

While Ray and Donna appreciate good conformation, they know profitability is measured by what's in the vat and the in-calf rate. Vida produced 5.35% butterfat and 3.75% protein, while Vista hit 5.32% butterfat and 3.75% protein.

The Kitchen family's Carenda Holstein herd was ranked fourth in the latest ABV BPI top herd list. Their JERONIMO Ps have bred several sires for the Australian dairy industry, including the ABS bull Carenda CHEVY PP.

More information: Bruce Ronalds, email: bruce.ronalds@genusplc.com, 0427 826 054



ABS JERONIMO P
– 5 year old.



AGRI-GENE

Holstein line-up impresses

The release of the August dairy proofs saw many highlights for the Agri-Gene Holstein line-up but none better than the continued rise of the home-grown Australian sire BOLTI-P. BOLTI-P again increased for BPI and is now the #1 Australian A2A2, Polled BPI sire. He offers an outcross alternative with a well-balanced combination of production and type with calving ease and great health traits.

New release Parfect son Kings-Ransom DYNASTY is Agri-Gene's leading TPI sire at +3012 and is also over 400 for BPI in Australia. DYNASTY will be a much sought-after sire for spring after being an early release contract mating only sire in autumn. Now on the open market his recent shipment was sold out prior to arrival. Make sure you order early to ensure supply from his September allocation.

Other new arrivals to Agri-gene's Holstein line up to impress were A2A2 Tropic son Calori-D CRS Tropic MAESTRO and high Type and Red carrier sire Dinomi REBELL who is over +3 for PTAT and backed by 11 generations of VG and EX cows. SJK HELIUM is the ultimate box ticker; Black, A2A2, moderate size with good Strength, calving ease and Positive DPR, HELIUM is available in Sexed4M Ultraplus and is an ideal bull for heifer programs this spring. BLACK RUM PP is a homozygous polled Mirand son who will allow breeders to use a homo polled bull without having to sacrifice any of their breeding goals.

Popular French sires NACASH and NARUTO are both starting to add milking daughters and pleasingly both have increased for BPI in Australia as well as their overseas proofs.

Another bull adding milking daughters and increasing for TPI, BPI and type traits was Kings-Ransom DYLAN. Meanwhile, breed legends DELTA-LAMBDA and Stantons CHIEF continue to add thousands of milking daughters globally, remarkably both again lifted for TPI, type and udders; DELTA-LAMBDA is now the #1 Udder composite bull from the Top 100 TPI sires at +2.95 UDC. Chief remains a farmers' favourite for the quality of his daughters who are impressing in both the milking parlour and show rings around the world.

More information: www.agrigene.com.au



Above: BOLTI-P.

Right: Kings Ransom Dynasty.



Genetics
AUSTRALIA
Breeding better Australian herds

GA has a SUPER August ABV release

A combination of genomic and daughter-proven sires make up Genetics Australia's August ABV offering. SUPERPOWER is one of the highest BPI daughter-proven bulls in Australia, with a well-balanced overall ABV for production, health and type. SUPERPOWER was bred by Emu Banks Holsteins, the #1 BPI herd. SUPERDAVE, a high-production bull with more than 200 milking daughters, is the highest Australian ASI bull and second overall with an impressive 301 ASI and 105 Workability ABV.

The first 32 milking daughters of popular genomic sire PEMBERTON, bred by Ray Kitchen of Carenda Holsteins, WA, indicate he could have a big impact in future breeding programs with 500+ BPI, 287 ASI and one of only a handful of bulls over 1,000 for the new Sustainability Index (SI).

Several young genomic bulls continue to rate highly with TOMMYDEE \$543 BPIg, STARMAGIC \$524BPIg and SAMARIA \$519BPIg all in the top 10. SONDALO, DECIPHER, KARAT, CINDERMAN and SHOALHAVEN are all 500 or greater for BPIg. STARMAGIC will be available for the first time this spring in limited supply.

Several other genomic Holsteins with depth of pedigree and performance have been added for the first time. EASTERN, an early JSHERMES son, has very positive production and type traits. His dam is an impressive SUPERDAVE daughter from the Loretto cow family that had success with proven bulls in the past. There are more options in polled genetics with A2P2 and CFP and KITAMI joined in August by new homozygous polled genomic sire LEMONADE, a CFP son bred by Vala Holsteins.

Nearly 70% of the GA Holstein team are A22 and daughter-proven. Bulls such as MAEBULL and SILVERELINE continue to be 'go to' bulls at 99% reliable. There is no better bull to improve mammary than SILVERELINE at 114 for Mammary System and he also remains one of the best production bulls available at 33 kg Protein, 59 kg Fat, 798 Milk and 257 ASI.

Genetics Australia continues to identify pedigree diversity combining traits of increased importance such as longevity, health and fitness, feed efficiency, heat tolerance and polled genetics. Greater emphasis will also be placed on the new Sustainability Index contributing to breeding a 'Greener Cow'.

Our Holstein sire catalogue is now available (contact Kelsie Hore at Khore@genaust.com.au)

More information: genaust.com.au



Left: SUPERDAVE daughter, bred by the Place family in Tesbury, Victoria.
Right: SUPERPOWER daughter, bred by the Dickson family, Terang, Victoria.



Semex sires rise to the top

Taking out #2 BPI genomic sire at +567 is Stantons Goldmedal. He has breed-leading production numbers at +323 ASI featuring +560 Milk L, +40 kg Protein, +0.46% Protein, +56 kg Fat, +0.47% Fat. A Westcoast Guarantee son and backed by a highly productive pedigree, his VG-87-4YR-CAN 2* Delta dam has a lifetime production of 53,628 litres 2421 kg Fat 4.5% Fat 2046 kg Protein 3.8% Protein. The next dam is a VG-85-2YR-CAN 19* Numero Uno. An Immunity+® and A2A2 sire, Goldmedal will sire solid type at +103 Overall Type and +104 Mammary System. His daughters will be medium sized, healthy and productive cows. A small amount of semen has been used in Australia resulting in 31 daughters milking in one herd.

Progenesis Powerhouse is the #3 BPI genomic sire at +545. Sired by Bandares from an EX-91-2E-CAN Jedi dam followed by Progenesis Enforcer Pat, one of the most popular donor dams in the Progenesis Program. Powerhouse combines a profitable production and health profile of +229 ASI, +101 Milk L, +26 kg Protein, +0.44% Protein, +31 kg Fat and +0.38% Fat with low Cell Count +191, +113 Survival, +108 Mastitis Resistance and +110 Daughter Fertility. At +104 Mammary System, expect Powerhouse daughters to display shallow (+107 Udder Depth), well-attached udders, (+103 Fore Attachment, +108 Rear Udder Height and +104 Centre Ligament) with the ability to handle the demands of modern milk production. Powerhouse will produce healthy, long-lasting cows with quality mammary systems that develop well lactation after lactation.

Progenesis Puertorico gained strong market interest in the autumn being A2A2 sire providing an outcross pedigree, calving ease and short gestation. The sire stack of AltaZazzle x AltaCabot x Fabulous gives the option to use Puertorico over many of the current BPI pedigrees. Predicted to sire profitable daughters at +473 BPIg and +235 ASI with high components +0.62% Fat and +0.36% Protein. Daughters will be predominately black, lower stature +97 with +100 Chest Width. An ideal heifer mating option at +103 Calving Ease and transferring to -10 days short for gestation length makes Puertorico an ideal option to use towards the end of joining to tighten the calving period. Puertorico will be available in Semexx™ sexed semen this spring. Popular sires Westcoast Perseus, Progenesis Polaris, Progenesis Dracaena, Kings-Ransom Dropbox and Westcoast Reverso continue to rank among the breed's best sires for BPI.

More information: www.semex.com.au



Stantons Goldmedal



Ready access to sexed semen

The August 2022 ABV release presents the growing presence of STG Australia as an active partner in the Australian dairy genetic industry. This partnership is reinforced with STG Australia's commitment in establishing Australia's only sexed semen processing facility that provides ready access to sexed semen from ST Genetic bulls.

Internationally, the commitment of ST Genetics is acutely focused on strategies that enable international partners access to genotypes that have domestic and international appeal. This is represented by several new Australian ST Genetics sires being added to our spring offering from a diverse range of pedigrees, these include Holstein sires Levi, Hawk, Kyrgios, Yahoo, Kencash, Talent, Fame and Complete. Several are Australian-bred along with a range from imported embryos that offer ready access for the Australian industry. This includes these sires being available this Spring in UltraPlus semen, as well as the increasingly accessed Fresh Sexed option.

These new entrants into the Australian industry are supported by Australian standing sire Kirk Andrews FONDOO. He is ticking so many boxes to satisfy the Australian dairy farmer's needs:

- Extreme rated current #1 for the new Sustainability Index bull 1091.
- Breed leading BPI 460.
- Breed leading milk volume and total solids
- Calving ease and short gestation length.
- Consistency – high type and outstanding udders.
- Farmers' choice based on milking daughter appeal – Likeability 108.
- Daughters designed for longevity and lifetime production.

The proof is in the delivery – consistent Fondoo daughters delivered with confidence..

More information: stgenetics.com.au



STG's LEVI.



Total commitment to Aust. genetics

The recent release of the August 22 ABVs has seen TLG's commitment to Australian dairy genetics strengthen. Premium genomic sires Cartel, Leith and Epic have once again provided strong Australian figures, while last year's farmer favourite Chilli PP has risen to #8 on the homozygous polled list.

TLGCartel (Redcarpet/Balisto) has a promising August proof day with his BPI increasing to 450 along with his HWI increasing to 501. Not only did his BPI and HWI increase so did his combined Overall Type now +114 and Mammary a solid 106. All these traits increasing together is a breed leading combination in Australia that is sure to leave many impressive daughters for Australian dairy farmers. His no holes proof will once again see his demand in the Autumn continue into the spring, so early orders will be a must.

TLGEPIC (Vogue 2020/Luster-p) with a 2867 GTPI and +2.16 for both type and udders is a single polled sire that promises rapid herd improvement. Currently the #1 polled bull in Australia for udders at +108, so for breeders looking at setting the bar high for polled genetics TLGEPIC is the ideal option. Currently available in both conventional and sexed sorted semen TLGLEITH (Nacash/Polar) is the only polled sire in Australia with a combined overall type score of +104 and daughter fertility of a massive +117. This Nacash son is evidence that solid type and high fertility combined with polled is possible. A great all-round sire that delivers on many fronts.

TLGCHILLI PP (Hotspot-p/Polar) is a silky black, A2A2, homozygous polled sire with a remarkable +113 for daughter fertility and impressive 206 for ASI. With high conception rate feedback from the field TLGCHILLI-PP has fast become the go to bull for fixed time programs.

With all of these Australian Holstein young sires standing at our facility at Camperdown, TLG has the ability to produce both fresh and frozen semen in conventional and sexed sorted semen. TLG has all your needs covered for the spring joining period.

More information: tlg.com.au



Above: TLGCARTEL

Right: CARTEL dam Emu Banks Balisto Donatelle.



Exciting new release sires at WWS

LANCASTER's debut proof at +571 BPI is the highest available Holstein bull and NxGen sire HAYK at +542 is at #5. Also worthy of note at 506 BPI and +995 Sustainability Index is LATROBE.

LANCASTER has a pedigree full of special bulls, each breed leaders at the time of use: Gameday, Legacy, Pinnacle then Jedi. Deeper in the pedigree are past greats, Air Magna and Planet, then a double cross of Board Chairman, and his famous son Blackstar. LANCASTER's +916 puts him at the elite end of the new Sustainability Index, with +3029 TPI, +1129 NM\$, +1221 DWP\$ and among the elite in the WWS/Select Sires Herd Health Profit Dollars at +1177.

LANCASTER brings a balanced mix of production +250 ASI with 56 kg of Fat, with massive component percentages at +0.45 Protein and +1.04 Fat, +109 Survival, +115 Daughter Fertility, +111 Mastitis Resistance and +104 Calving Ease. All in a modern-day ideal cow of 99 Stature and +103 Chest Width. LANCASTER carries the A2A2 gene and will be available late September.

HAYK is part of our popular limited availability program NxGen, which provides access to our most elite bulls. Previously sires in this program include RENEGADE, CONWAY and PERFECT.

HAYK is by the quiet achiever Renegade son Taos, who has sired a number of bulls over 480 BPI including ULYSSES at +485 and GEORGE MILLER at +486. The cow family HAYK - the Cookiecutter H family - produced the US\$1.925 million DOC HAVE NOT cow, and countless high-selling bulls in our offering these days including HOMECOMING and extreme type sire in HANCOCK. HAYK's dam is by the #2 proven TPI sire Tahiti, a granddaughter of the Mont Hadley VG88 cow who is the dam of #5 proven BPI sire SANDOR. Hadley via a EX-91 Epic daughter is the daughter of MOM Halo VG88, who is also the 3rd dam of DOC HAVE NOT EX-94. HAYK brings a blend of milk volume and components via 62 kg of combined solids, long-lasting cows with +112 Survival, and very fertile at +113 Daughter Fertility and an impressive +111 Mastitis Resistance. Astute breeders are getting in early on HAYK. Contact your local WWS rep to learn more about how to gain access to a bull like HAYK.

More information: wwsaustralia.com



DAM Welcome Tel Tahiti Huma



Classification Tour Results

6/5/2022 to 18/8/2022

Central & Western NSW

D D CHESWORTH

EX-92-3E	Rissmore Fever Adeen-IMP-ET	5 Lact.
EX-90-1E	Tomargo Avalon Essie	3 Lact.
EX-90-2E	Willette Skyreg Alison	5 Lact.

S D & E G CHESWORTH

EX-91-3E	Instyle Goldsun Kerrie	6 Lact.
EX-91-2E	Tomargo Recluse Bradnick Audacity	4 Lact.
EX-90-1E	Tomargo Recluse Balti Starbaby	4 Lact.
EX-90-1E	Tomargo Recluse Balti Sue	5 Lact.
EX-90-1E	Tomargo Recluse Bankroll Karla	4 Lact.
EX-90-1E	Tomargo Recluse Chief Michaela	3 Lact.
EX-90-1E	Tomargo Recluse Creeky Marvel	3 Lact.
EX-90-1E	Tomargo Recluse Solom Tilly	4 Lact.
EX-90-3E	Tomargo Recluse Palermo Dream	8 Lact.
EX-90-3E	Tomargo Recluse Stanley Duchess	5 Lact.
EX-90-2E	Instyle Doorman Turnell	4 Lact.
EX-90-2E	Tomargo Recluse Brad Alison	4 Lact.
EX-90-2E	Tomargo Recluse Demps Snowwhite	4 Lact.
EX-90-2E	Tomargo Recluse Farnear Starbaby	4 Lact.
EX-90-2E	Tomargo Recluse Stan Frantessie	4 Lact.
VG86	Eagle Ridge Denver Bro Polly	1L 3.0Y
VG85	Elmar Chief Jessica 4444	1L 2.7Y
VG85	Tomargo Recluse Alcatraz Jostle	1L 2.4Y
VG85	Tomargo Recluse Chief Kello	1L 2.3Y
VG85	Tomargo Recluse Chief Pricilla	1L 3.0Y
VG85	Tomargo Recluse Door Crisp	1L 2.6Y
VG85	Tomargo Recluse King Starbaby	1L 2.5Y
VG85	Tomargo Recluse Lambda Dee-TWIN	1L 2.5Y
VG85	Tomargo Recluse Pharo Starbaby	1L 2.5Y
VG85	Tomargo Recluse Sidekick Reckless	1L 2.1Y
VG85	Tomargo Recluse Stantchief Apricot	1L 2.5Y

CUMBEROONA HOLDINGS PTY LTD

EX-91-2E	Cumeroona Windbrook Apricot	6 Lact.
VG85	Cumeroona B52 Apricot 4094	1L 2.5Y
VG85	Cumeroona Mirand Alisha-PO	1L 2.3Y

Far South Coast, NSW

A J ALLEN

EX-90-2E	Galba Db Janette	4 Lact.
----------	------------------	---------

WARWICK FARM ENTERPRISES

EX-90-1E	Warwick Farm Sweet Ascandy-ET	6 Lact.
VG85	Warwick Farm 1stgrade Imagine	1L 3.3Y

Hunter Valley, NSW

HASSETT FAMILY

EX-91-2E	Strongbark Att Larrissa	5 Lact.
A RICHARDSON-HOUGH & M R ROOD		
EX-90-1E	Whitegold Reginald Beauty	4 Lact.
EX-90-1E	Whitegold Trifecta Game	3 Lact.

A S R SHEARER & SON

EX-91-2E	Wyoming Secondbrook Blackie	6 Lact.
EX-90-1E	Wyoming Aftershock Brenda	5 Lact.
EX-90-2E	Wyoming Smokin Dixie	5 Lact.
EX-90-2E	Wyoming Solomon Dayis	5 Lact.

Manning, NSW

CHRIS & BRENDAN BUTLER

VG85	Butlervale Sidekick Pam	1L 2.10Y
------	-------------------------	----------

C R COWAN

EX-93-3E	Eclipse Meridian Queen	6 Lact.
EX-91-4E	Avonlea Aftershock Dorinda-CNF-DPF-BLF	7 Lact.
EX-90-1E	Budgerie Apples Jodie-ET-RED	4 Lact.
EX-90-4E	Instyle Dempsey Shimmer	6 Lact.
EX-90-3E	Budgerie Shock Pam	7 Lact.
EX-90-2E	Juleanwes Field Dita	5 Lact.

C R & D EMERTON

EX-90-1E	Regemo Bigstone Rose	5 Lact.
----------	----------------------	---------

G W & K M FORBES

EX-91-2E	Barrington View Dodge Sherry 4516	7 Lact.
EX-90-1E	Barrington View Altaiota Kristal 4450	7 Lact.
EX-90-1E	Barrington View Goldenboy Dell	7 Lact.
EX-90-1E	Barrington View Guthrie Bell 4846	6 Lact.
EX-90-1E	Barrington View Pearl 4477	7 Lact.
EX-90-1E	Barrington View Punch Alice	3 Lact.

New England & North West NSW

W J & J L BROWN

EX-92-4E	Juleanwes Fever Leila	7 Lact.
EX-92-3E	Juleanwes Braxton Collaroy	5 Lact.
EX-90-2E	Juleanwes Braxton Berlin	7 Lact.
EX-90-2E	Juleanwes Dickey Tame	4 Lact.
VG85	Juleanwes Bytes Passion	1L 3.0Y

S J & L J COOMBES

EX-93-3E	Fraser Goldwyn Meg	7 Lact.
EX-90-2E	Murrubrook Goldwyn Rachel-ET	4 Lact.
South Coast & Tablelands, NSW		

M D G EWIN

VG85	Woodstock Tlgoman Joy 2751	1L 3.0Y
------	----------------------------	---------

W J MURRAY & SONS

EX-91-4E	Rissmore Blitz Sally 2nd	9 Lact.
----------	--------------------------	---------

C & W WATTS

VG85	Pyree Licorice Peachie	1L 2.1Y
------	------------------------	---------

South West Riverina

L A & C M CHESWORTH

VG86	Willette Ntime Perfection	1L 2.3Y
VG85	Willette Lawson Alison 4	1L 2.5Y
VG85	Willette Rabo Alison 8	1L 3.3Y
VG85	Willette Sneaker Alison	1L 2.2Y

KIT DAVIDSON

EX-90-1E	Kit Manifold Katie	5 Lact.
EX-90-2E	Murrubrook Lavaman Cassie-CNF-DPF-BLF	5 Lact.

ELOORA PASTORAL CO

EX-91-2E	Aroona Kendall Fenn 2979	8 Lact.
EX-91-2E	Eagle Ridge Ceo Gwa Polka	4 Lact.
EX-90-1E	Eagle Ridge Elijah F Polka	4 Lact.
EX-90-3E	Holloddon Emerald Corrine 2268-CNF-DPF-BLF	6 Lact.
EX-90-2E	Eclipse Atwoods Deanne	5 Lact.

FLANAGAN FARMS

EX-90-1E	Wood Lawn Rabo Coconut 5977	5 Lact.
W E & I T SHAW & SONS		
EX-90-1E	Hawova Fever Maida-ET	7 Lact.

Atherton & North Queensland

BEVANDALE HOLSTEINS

EX-91-3E	Bevandale Metalica Satin	7 Lact.
EX-90-1E	Bevandale Breeza Meg	6 Lact.
EX-90-6E	Bevandale Talent Meg-RED	10 Lact.
EX-90-2E	Bevandale Kingboy Lorraine	4 Lact.
EX-90-2E	Bevandale Snap Mona	6 Lact.
VG85	Bevandale Tatoo Shower	1L 2.9Y

M B DALEY PTY LTD

EX-91-3E	Millaa View Drestreelamity-RED	7 Lact.
EX-90-3E	Millaa View Spotted Dewdrop 2	10 Lact.
VG85	Millaa View No Deal Winter	1L 3.0Y

C J & S J DALEY

EX-91-3E	Ourway Goldwyn Betsyanne-ET	6 Lact.
EX-90-1E	Ourway Seaver Maisie	5 Lact.
EX-90-8E	Ourway Lethal Phyllis 195	13 Lact.
EX-90-5E	Ourway Jeeves Rosebloem	8 Lact.
VG85	Ourway Isitolo Posch	1L 3.1Y

TERESE DALEY

EX-90-1E	Millaa View Diamond Pansy-CNF-DPF-BLF	3 Lact.
----------	---------------------------------------	---------

Fleurieu & Central South Australia

EDGE HOLSTEINS

EX-90-3E	Edge Fever Opale	6 Lact.
----------	------------------	---------

MISTY BRAE HOLSTEINS PTY LTD

EX-92-2E	Misty Brae Breeza Penny	6 Lact.
EX-91-2E	Misty Brae Jenkins Della	6 Lact.
EX-91-2E	Misty Brae Oman Ding	8 Lact.

ROCKWELLA FARM HOLSTEINS

EX-91-2E	Rockwella Farm Regal Jewel-CNF-DPF-BLF	6 Lact.
EX-90-1E	Rockwella Farm Dispatch Heather 3rd	4 Lact.
EX-90-1E	Rockwella Farm Dynamic Molly 2	5 Lact.
EX-90-1E	Rockwella Farm Dynamic Morn	4 Lact.
EX-90-1E	Rockwella Farm Eudon Jewel	4 Lact.
EX-90-1E	Rockwella Farm Jesse Heather	6 Lact.
EX-90-1E	Rockwella Farm Nirvana Judith 3rd	3 Lact.
EX-90-1E	Rockwella Farm Razor Jewel	4 Lact.
EX-90-1E	Rockwella Farm Shottle Dixie	9 Lact.
EX-90-2E	Edge Long Shakira-CNF-DPF-BLF	5 Lact.
EX-90-2E	Rockwella Farm Largress Lee	5 Lact.

C J & K A ROYANS

EX-90-6E	Windy Vale Shottle Amour	8 Lact.
EX-90-5E	Windy Vale Windbrook Candice-ET	8 Lact.
EX-90-4E	Windy Vale Breeza Lauren	7 Lact.
EX-90-2E	Windy Vale Brawler Zandra-ET	5 Lact.

R & R WALMSLEY

EX-90-1E	Robsvue Avalanche Penny	3 Lact.
VG85	Eclipse Altitude J Princess-ET-RED	1L 2.7Y

South Eastern South Australia

FANTASIA PASTORAL CO P/L

EX-91-3E	Fantasia Guthrie Cupid	7 Lact.
EX-91-2E	Fantasia Baxter Rachel	4 Lact.
EX-91-2E	Fantasia Marmaduke Marlene	6 Lact.
EX-90-1E	Fantasia Otto Tbell	9 Lact.
EX-90-1E	Fantasia Sanchez Poppy	7 Lact.



East Gippsland, Victoria

W E & M J & T W HENRY

EX-92-4E	Wilara Ohgijose Tracy-MFF-CNF-DPF-XIF-BLF	10 Lact.
EX-90-1E	Wilara Silver Request	4 Lact.

North-Western Victoria

CLYDEBANK HOLSTEINS

EX-93-2E	Clydebank Braxton Leonie-ET	4 Lact.
EX-91-3E	Clydebank Ordeal Lassette	6 Lact.
EX-90-1E	Clydebank Loaded Caroline	3 Lact.
EX-90-1E	Clydebank Windbrook Rosebeet	5 Lact.
EX-90-3E	Clydebank Sailing Whitney	5 Lact.
EX-90-2E	Clydebank Shottle Leonie-ET	6 Lact.
EX-90-2E	Clydebank Winmar Roselassie	6 Lact.
VG85	Clydebank Applecrisp Genie	1L 2.11Y

CLYDEVALE HOLSTEINS PTY LTD ATF DEE FAMILY TRUST

EX-93-4E	Mollannie Pleasure Qualative-CNF-DPF-XIF-BLF7	Lact.
EX-91-1E	Clydevale Brawler Pastime	7 Lact.
EX-91-1E	Clydevale Solomon Sunset -ET-MFF-CNF-DPF-XIF-BLF	4 Lact.
EX-91-5E	Clydevale Cricket Lesley	8 Lact.
EX-91-5E	Clydevale Million Paradise-ET	8 Lact.
EX-91-2E	Paringa Aftershock Stacey	5 Lact.
EX-90-1E	Clydevale Archival Palais-MFF-CNF-DPF-XIF-BLF	5 Lact.
EX-90-1E	Clydevale Ashmark Lynx	4 Lact.
EX-90-1E	Clydevale Atwood Frenzy	5 Lact.
EX-90-1E	Clydevale Channer Fuschia	4 Lact.
EX-90-1E	Clydevale Cookiecutter Fig	7 Lact.
EX-90-1E	Clydevale Donante Submarine	8 Lact.
EX-90-1E	Clydevale Fullthrottle Eva	6 Lact.
EX-90-1E	Clydevale Instruct Flaccid	6 Lact.
EX-90-1E	Clydevale Mickey Pleased	9 Lact.
EX-90-1E	Clydevale Mikasa Polis	5 Lact.
EX-90-1E	Clydevale Racer Pigeon	4 Lact.
EX-90-1E	Clydevale Reginald Pearl	4 Lact.
EX-90-1E	Clydevale Superstyle Peninsula	4 Lact.
EX-90-3E	Clydevale Pragna Icecream	7 Lact.
EX-90-3E	Clydevale Pragna Imagine	8 Lact.
EX-90-2E	Clydevale Aftershock Sally Et2-ET	5 Lact.
EX-90-2E	Clydevale Beau Patron	8 Lact.
EX-90-2E	Clydevale Brobie Player	5 Lact.
EX-90-2E	Clydevale Fever Lavinia-ET	8 Lact.
EX-90-2E	Clydevale Stanleycup Isobar	6 Lact.
EX-90-2E	Clydevale Tko Snowgum	9 Lact.
EX-90-2E	Kayton Goldchip Irene	5 Lact.
VG85	Clydevale Jacot Lorax	1L 2.5Y
VG85	Clydevale Kingpin Italic	1L 2.9Y
VG85	Clydevale Stark Peerless	1L 2.10Y

MATHEW DENNIS & ALLEN & LOIS DENNIS

EX-91-2E	Warramont Impression Ella	5 Lact.
EX-91-2E	Yonks Park Classic Elle-ET	6 Lact.
EX-90-1E	Yonks Park Adonis Blackrose-ET-RED	6 Lact.

T D & K J GILMORE

EX-90-2E	Jannali Larson Bonnie-IMP-ET-RED	6 Lact.
EX-90-1E	Murrbrook Doorman Lynette-ET	3 Lact.

C B & K E GORDON

EX-91-1E	Gorgala Bradnic Kassie	3 Lact.
EX-91-3E	Gorbro Bradnick Unbelievable	6 Lact.
EX-91-2E	Gorbro Bolton Charcoal	8 Lact.
EX-90-1E	Gorgala Crush Cretonne-ET	3 Lact.
EX-90-1E	Gorgala Sheath Tiffany	5 Lact.
EX-90-2E	Gorbro Sid Tiffany-ET	6 Lact.

EX-90-2E	Gorbro Stanley Kassie-ET	6 Lact.
EX-90-2E	Gorbro Stanleycup Roxmary	5 Lact.
EX-90-2E	Gorgala Atley Rose	5 Lact.
VG85	Gorgala 1st Grade Wanda	1L 2.11Y
VG85	Gorgala Chief Patrice	1L 2.11Y
VG85	Gorgala Chief Rach	1L 2.11Y

R K & J R GORDON

EX-94-4E	Gorbro Goldwyn Robin-ET	6 Lact.
EX-93-4E	Fleyas Hatali Medallioncherry-CNF-DPF-BLF	6 Lact.
EX-91-3E	Eagle Ridge Amazing G Pollyanna	5 Lact.
EX-91-3E	Horizon Windbrook Leyla-CNF-DPF-BLF	6 Lact.
EX-91-2E	Avonlea Lady Ruby-ET	5 Lact.
EX-90-1E	Avonlea Doorman Ritzy 2nd-ET	4 Lact.
EX-90-1E	Gorbro Braxton Indira-ET	4 Lact.
EX-90-1E	Gorbro Kassies Arival	4 Lact.
EX-90-2E	Avonlea Golden Fay-ET-CNF-DPF-BLF	4 Lact.
EX-90-2E	Avonlea Sid Lana-IMP-ET	6 Lact.
EX-90-2E	Gorbro Windhammer Livia-CNF-DPF-BLF	5 Lact.
VG85	Gorbro Arabella Unix-IMP-ET	1L 2.3Y
VG85	Gorbro Unix Arangatang-IMP-ET	1L 2.2Y

R K & J R GORDON & J H & C J GARDINER

EX-91-2E	Murrbrook Reginald Victory-ET-CNF-DPF-BLF	4 Lact.
----------	---	---------

BEN GOVETT

EX-92-3E	Foxdale Reginald Peggy-CNF-DPF-BLF	7 Lact.
EX-90-3E	Bluechip Windbrook Noni-ET	5 Lact.
EX-90-1E	Tandara Alltheway Chorona 8-ET	3 Lact.

J E HARROWER

EX-90-1E	Beltana Jordan Moncherie-IMP-ET	5 Lact.
----------	---------------------------------	---------

JARED & COURTNEY IRELAND

EX-90-1E	Redmaw Christmas Janea 1791	5 Lact.
----------	-----------------------------	---------

CRAIG A LISTER

EX-90-1E	Calister Planet Guava 6601	5 Lact.
EX-90-1E	Charlock Delsanto 3631	5 Lact.
EX-90-2E	Calister Atley Passion 6642	4 Lact.
EX-90-2E	Ingolmore Brawler Pretex -MFF-CNF-DPF-XIF-BLF	5 Lact.

MITCH HOLSTEINS

EX-90-1E	Holloddon Twist Leonie 2381-CNF-DPF-BLF	5 Lact.
EX-90-3E	Tpm Jeeves Razz 2103	8 Lact.
EX-90-2E	Mitch Superieur Dolly	5 Lact.
MITCH HOLSTEINS & MOUNTAIN T & P		
EX-90-3E	Mitch Chipper Beauty -IMP-ET-RED-MFF-CNF-DPF-XIF-BLF	6 Lact.

S S & C L MODRA

EX-90-1E	Avalon Ali Doris	8 Lact.
----------	------------------	---------

S J & M E PORTWINE

EX-92-2E	Goldenview Dictator Angela	10 Lact.
EX-90-1E	Warrawae Park Esquire Wisty	6 Lact.
EX-90-2E	Warrawae Park Esquire Elissa	6 Lact.

QUINNER HOLSTEINS

EX-90-1E	Quinner Solomon Sundae-ET	3 Lact.
VG85	Elmar Chief Josephine 4462	1L 2.6Y
VG85	Quinner Mirand Sundae 8010-PO	1L 2.4Y

B E & J N SOMERVILLE

EX-90-1E	Brindabella Control Dottie	3 Lact.
EX-90-1E	Clydebank Aftershock Rosebabs	3 Lact.

T & M SOMERVILLE

EX-90-1E	True Blue Attit Scarlet-ET-RED-CNF-DPF-BLF	5 Lact.
EX-90-1E	True Blue Dempsey Jodene-ET	4 Lact.
VG85	True Blue Awekix Maple-RED	1L 3.2Y

W L & J A STEWART

VG85	2492	1L 2.9Y
------	------	---------

BRADLEY & LEESA WINDRIDGE

EX-92-2E	Windy Ridge Guthrie Emirate	5 Lact.
EX-91-3E	Windy Ridge Stanleycup Abby	6 Lact.
EX-91-2E	Windy Ridge Windbrook Josephine	6 Lact.
EX-90-1E	Rockmo Destry Rae-IMP-ET	5 Lact.
EX-90-1E	Windy Ridge Doorman Kendra	6 Lact.
EX-90-1E	Windy Ridge Laddawesome Redraspberries-ET	4 Lact.
EX-90-1E	Windy Ridge Solomon Kate	5 Lact.
EX-90-2E	Windy Ridge Emerald Larsie	6 Lact.
VG85	Windy Ridge Doc Kate	1L 2.3Y
VG85	Windy Ridge Doc Rosebide	1L 2.2Y

R L & T L WISHART

EX-91-1E	Windy View Armani Bobby	5 Lact.
EX-91-4E	Rowlands Park Socrates Carol	9 Lact.
EX-90-1E	Fleyas Doorman Lotus-ET	4 Lact.
EX-90-1E	Glenorleigh Lavanguard Liskard	6 Lact.
EX-90-1E	Rowlands Park Balance Vicki	6 Lact.
EX-90-1E	Rowlands Park Braxton Marion	5 Lact.
EX-90-1E	Rowlands Park Crown Sasha-ET	6 Lact.
EX-90-1E	Rowlands Park Crr Canbee Arlinda	4 Lact.
EX-90-1E	Rowlands Park Estate Fawina	4 Lact.
EX-90-1E	Rowlands Park Liquid Gold Ding	5 Lact.
EX-90-1E	Rowlands Park Windbrook Mabel-ET	5 Lact.
EX-90-1E	Rowlands Park Wood Lucky	4 Lact.
EX-90-1E	Rowlands Park Wyman Alicia	7 Lact.
EX-90-1E	Windy Vale After Bonnie-IMP-ET	6 Lact.
EX-90-1E	Windy View Impression Paris	4 Lact.
EX-90-3E	Rowlands Park Mr Sam Lucky	8 Lact.
EX-90-2E	Joellan Blitz 3281	11 Lact.
EX-90-2E	Rowlands Park Bolt Lucky-ET	11 Lact.
VG85	Rowlands Park Percy Arlinda-PO	1L 2.1Y

Northern Victoria

MR BRUCE FULLER

VG85	Elmar Chief Farlex 4415	1L 2.10Y
------	-------------------------	----------

J M HISCOCK & SONS

EX-92-4E	Brurob Moon Petite	7 Lact.
EX-91-1E	Brurob Reginald Rani	5 Lact.
EX-90-1E	Brurob Brooksy Linda	6 Lact.
EX-90-1E	Brurob Jeano Ann	6 Lact.
EX-90-1E	Cairnhill Fever Fizz	7 Lact.

MANGARRA HOLDINGS TRUST

VG85	Windy Vale Goldwyn Queen-ET-CNF-DPF-BLF	1L 2.5Y
------	---	---------

GREGORY F MAUGER

EX-91-2E	G Major Moonlit Posch	8 Lact.
EX-90-1E	Andes Rich Jewel	8 Lact.
EX-90-2E	G Major Goochi Posh	5 Lact.
EX-90-2E	Shevron Steady Liberty	8 Lact.
VG85	G Major Nadine Posch	1L 2.10Y

M & M MEYLAND

EX-91-3E	Ashen Plains Brazzle Patricia	5 Lact.
EX-90-1E	Ashen Plains Aftershock Blossom	4 Lact.
EX-90-1E	Murrbrook Goldwyn Petunia-ET	4 Lact.
EX-90-2E	Hadleigh Damion Respect 1-ET	5 Lact.
EX-90-2E	Murrbrook Snow Toni	4 Lact.
EX-90-2E	Murrbrook Windbrook Gem-ET	6 Lact.
VG85	Ashen Plains Doorman Cheeko	1L 3.4Y

J & J PEDRETTI

VG85	Jibantra Park Chief Mollymay	1L 2.9Y
------	------------------------------	---------

**SOMERELLE HOLSTEINS**

EX-90-1E	Murribrook Atwood Janette	3 Lact.
EX-90-1E	Somerelle Goldenboy Lassin	8 Lact.
EX-90-1E	Somerelle Tko Lass	5 Lact.
EX-90-1E	Somerelle Windbrook Bally-IMP-ET	5 Lact.
EX-90-2E	Somerelle Destry Collette	5 Lact.
VG85	Murribrook Diamond Issy-ET-CNF-DPF-BLF	1L 2.9Y

GRAEME SPRUNT

EX-90-1E	Kaarmona Atley Paula 6	6 Lact.
----------	------------------------	---------

WALLAROI HOLSTEINS

EX-91-4E	Fairvale Bolton Butter 165	9 Lact.
EX-91-2E	Wyena Wildwind Caboose	6 Lact.
EX-90-1E	Tramar Goldchip Bobbi	4 Lact.
EX-90-1E	Wallaroi Jordan Melita	7 Lact.
EX-90-4E	Belmont Bolton Ita	11 Lact.

South Gippsland, Victoria**W R & B G ANDERSON**

EX-92-4E	Bundalong Tiergan Jennifer 117-ET	7 Lact.
EX-90-1E	Bundalong Crown Perfection 34	7 Lact.
EX-90-1E	Bundalong Mogul Waves 56	6 Lact.
EX-90-2E	Bundalong Tiergan Starlet-CNF-DPF-BLF	6 Lact.

D & C & R BERRYMAN

EX-90-2E	Netherwood Doorman Pepper-ET	5 Lact.
----------	------------------------------	---------

L G & L A & T C CALDER

EX-91-4E	Calderlea Reginald Matti	8 Lact.
EX-90-2E	Calderlea Fever Mary-CNF-DPF-BLF	7 Lact.
EX-90-2E	Calderlea Freedom Tamantha	5 Lact.
EX-90-2E	Calderlea Tyson Faith 2-CNF-DPF-BLF	6 Lact.

CARISMA HOLSTEINS

EX-90-1E	Carisma Cairnhill Presence 1st-ET	6 Lact.
EX-90-1E	Hill Valley Mogul Silk-ET	6 Lact.
EX-90-3E	Carisma Cairnhill Paradise 4th-ET	5 Lact.
VG85	Carisma Unstopabull Remi-RED	1L 2.2Y

D J & J A CUSTANCE

EX-90-2E	Eliza View Frank Alice 25	12 Lact.
----------	---------------------------	----------

R K & S J GOODE

EX-91-2E	Boronia Glen Canbee Lisa	5 Lact.
EX-90-1E	Boronia Glen Medallion 1545	4 Lact.

A J HARRISON

EX-91-3E	Fairvale Shottle Nola 25	7 Lact.
EX-91-2E	Dornbrae Glauco Megan-TWIN	6 Lact.
EX-90-1E	Krishlaye Lauthority Jada	4 Lact.
EX-90-1E	Krishlaye Windbrook Matini-ET	5 Lact.
EX-90-4E	Eagle Ridge Goldsuns Tiffany	7 Lact.
EX-90-4E	Krishlaye Steady Jasmine	9 Lact.
EX-90-3E	Eagle Ridge Brokaw T Paula	5 Lact.
EX-90-3E	Quality Ridge Baltmor Alice	5 Lact.

INLET VIEW HOLSTEINS

EX-91-4E	Ardmoor Shottle Jane	8 Lact.
----------	----------------------	---------

JONES FAMILY

EX-91-1E	Willette Fever Hay-ET	6 Lact.
EX-91-2E	Eclipse Yorik Tabaret-ET	5 Lact.
EX-91-2E	Murribrook Brawler Lola-ET	5 Lact.
EX-90-3E	Kemi-Kahe L25	9 Lact.
EX-90-3E	Windy View Baltmor Connie	6 Lact.
EX-90-2E	Avonlea-Yf Windbrook Apple-IMP-ET	6 Lact.
EX-90-2E	Cypress Grove R11 Guthrie Rosette-ET	5 Lact.
EX-90-2E	Cypress Grove R12 Guthrie Rosette-ET	5 Lact.

P G PRICE

EX-90-3E	Hill Valley Northern Anamimka	8 Lact.
----------	-------------------------------	---------

WALKERBRAE AUSTRALIA

EX-92-3E	Walkerbrae Impression Donna	5 Lact.
VG85	Walkerbrae Unix Donna	1L 2.2Y

South West Riverina**R G & K V EAGLE**

EX-90-1E	Eagle Ridge Goldchip C Polka	5 Lact.
----------	------------------------------	---------

West Gippsland, Victoria**B L & M COSTER**

EX-90-1E	Bellbrook Goldcrown Linda	7 Lact.
EX-90-1E	Bellbrook Medal Comet	7 Lact.
VG85	Bellbrook Roulette Fay	1L 2.2Y

MUNDEN FARMS HOLSTEINS

EX-91-4E	Heartland Dundee Angel	8 Lact.
EX-90-3E	Amelia Park Gabe Dimples	8 Lact.
EX-90-2E	Sensei Shottle Posey-ET	6 Lact.
EX-90-2E	Tomargo Recluse Solomon Whynot	4 Lact.

MAL R NIKORA

VG86	Winwood Tatoo Lightsout	1L 2.5Y
------	-------------------------	---------

DECLAN L PATTEN

VG86	Lightning Ridge Fd Avalanche Katrysha-IMP-ET	1L 2.5Y
------	--	---------

MATTHEW ROBERTSON

EX-91-2E	Lightning Ridge Cmd C45 Sateen-IMP-ET-RED-PO	7 Lact.
EX-91-2E	Redholme Damion Paradise-ET	7 Lact.

M J, T L, J W & J S ROBERTSON

VG86	Myrtleholme Unstopabull Monique-RED	1L 2.8Y
------	-------------------------------------	---------

Western District, Victoria**ALNOR PARTNERS**

EX-91-3E	Alnor Betty Cats 6029	8 Lact.
EX-90-1E	Alnor Liz Twist 7567	4 Lact.
EX-90-1E	Alnor Lynette Feline 6532	8 Lact.
EX-90-1E	Alnor Teresa Regi 7187	5 Lact.
EX-90-2E	Alnor Gypsy Doubledutch 6814	7 Lact.

B & D ANDERSON

EX-91-1E	Blossomvale Lheros Rose	7 Lact.
EX-90-1E	Blossomvale Reginald Connie	6 Lact.
EX-90-1E	Blossomvale Windbrook Iluka	7 Lact.

P J & J E BOND

EX-91-2E	Taroon Park Blitz 2781	9 Lact.
EX-90-2E	Taroon Park Hillside 355	5 Lact.

P J & C A CASTLES

EX-90-1E	Camellia Grove Marshall Smurf	4 Lact.
EX-90-2E	Camellia Grove Marshalls Catherine	5 Lact.

B J & J L DICKSON

EX-93-3E	Emu Banks Medallion Sonia 7160	7 Lact.
----------	--------------------------------	---------

G M & P E FLEMMING

EX-90-3E	Philmar Aftershock Madora 3924	6 Lact.
EX-90-2E	Philmar Guthrie Leonie 6033	4 Lact.

PETER H FULLERTON

EX-92-2E	Kentish Downs Mvp Tricia	4 Lact.
VG85	Daybreaker Mvp Debutante 41-ET	1L 3.5Y

KERRI & BRENDAN GALLAGHER

EX-90-3E	Jaslana Beacon Demi	7 Lact.
VG85	Galcrest Kingdoc Showstar	1L 2.4Y

KEVIN & CARLA GASS

EX-90-1E	Kearla A Apple Tiffany	4 Lact.
----------	------------------------	---------

JONATHON JOSEPH GLEESON

EX-91-3E	Gleestar Gunnar Aj	8 Lact.
EX-90-1E	Hatali Medallion Ding 761	4 Lact.
EX-90-4E	Gleestar Ernesto Cutie	8 Lact.
EX-90-2E	Gleestar Reflector Perfection	6 Lact.

L J & L J GUYETT

EX-90-4E	Sunny Banks Jetfynn Sunny	8 Lact.
----------	---------------------------	---------

N & C HALLYBURTON

EX-90-1E	Coonara Fever Adeen 5978-IMP-ET	5 Lact.
----------	---------------------------------	---------

GW HIBBERD

VG85	Coorieungle Kingdoc Bigote	1L 2.2Y
------	----------------------------	---------

RICHARD HULL

VG86	Eclipse Emilio 7 2 Princess V-ET	1L 2.11Y
VG85	Eclipse Mirand Adeen-PO	1L 2.8Y

INSTYLE HOLSTEINS

EX-90-1E	Instyle Solomon Patch	4 Lact.
EX-90-1E	Wyena B Mac Caboose	4 Lact.
EX-90-2E	Instyle Solomon Amy	4 Lact.
EX-90-2E	Linsand Atwood Lemondrop-ET	4 Lact.

INSTYLE HOLSTEINS & T K & L M NORTHFIELD

VG86	Cp Capital Cinnamon	1L 2.8Y
------	---------------------	---------

D W & G L JOHNSTON

EX-90-1E	Segenhoe Park Fever Petra	4 Lact.
----------	---------------------------	---------

LINSAND FARMS PTY LTD

EX-94-3E	Linsand Impression Pro	6 Lact.
EX-90-1E	Linsand Dempsey Steph	4 Lact.

EUGENE REA

EX-91-1E	Childers Cove Merrick Alexis	5 Lact.
----------	------------------------------	---------

B E & A B & R B ROBERTSON

EX-90-1E	Struan Destry Cuddles 1	6 Lact.
EX-90-1E	Struan Mario Marion	3 Lact.

R J & E H SWAYN

EX-92-1E	Jordney Park Mrsam Matilda	10 Lact.
EX-90-1E	Jordney Park Damion Ivy	5 Lact.
EX-90-1E	Jordney Park Reginald Alice-RED	4 Lact.
EX-90-3E	Jordney Park Ginary Martha	7 Lact.
EX-90-3E	Jordney Park Tartini Polly	7 Lact.
EX-90-2E	Jordney Park Reginald Kerri	6 Lact.
EX-90-2E	Jordney Park Steady Polly	7 Lact.

WHISKEY CREEK HOLSTEINS

EX-91-2E	Ebony Park Hero Macey	8 Lact.
----------	-----------------------	---------

N & M WILKIE

EX-90-1E	Warramont Diamondback Fondue-ET	3 Lact.
----------	---------------------------------	---------

Northern Western Australia**PEIRCE HOLSTEINS PTY LTD & ECLIPSE HOLSTEINS PTY L**

VG85	Eclipsepeirce Crushabull Lila Z 8743-ET	1L 2.8Y
------	---	---------

Classification tour dates

September/October: Manning, Hunter

October: Western NSW, Central NSW, South Coast & Tablelands: NSW, Far South Coast NSW, Far North NSW

November: WA, Tasmania, Victoria

December: Victoria, South Australia

Bevandale’s record-breaking Excellence

A new Australian record was achieved in far north Queensland when the Bevan family’s 8-year-old Bevandale Breeza Meg EX-90-1E became an 8th generation Holstein to classify Excellent.

While several cow families follow close behind, the remarkable Meg family remains the only Australian Holstein bloodline to achieve this elusive feat.

Holstein Australia classifier Sean Millar scored Breeza Meg fresh on her 6th lactation, having calved in March with a Peak Jagger heifer. Bred by Master Breeders Henry and Anna Bevan and family, the Megs have been a feature of their Bevandale herd since 1998, after Henry’s father John bought Wyoming Lillian Meg EX-91-3E STP 4* LIFE 1 from fellow Master Breeders, Charlie and Peg Shearer (Wyoming Holsteins).

The Meg family is renowned for their longevity, with Lillian Meg surviving a remarkable 22 years, milking for 11 lactations, and producing 12 registered progeny, including 2 Excellent and 2 VG89 daughters. Lillian Meg became a four-time Holstein Australia Cow of the Year finalist, with her daughter Bevandale Talent Meg-RED EX-90-6E the dam of the record breaking Breeza Meg.

Talent Meg herself is still active at 14 years old, milking on her 10th lactation. She was classified in May, alongside her daughter, and awarded EX-90-6E with an EX-93 mammary.

Youthful udders is a trait Henry Bevan sees consistently with his Megs, which he attributes to their remarkable longevity.



Australia’s first 8-generation Excellent Holstein, Bevandale Breeza Meg EX-90-1E, bred by Henry and Anna Bevan and family, Bevandale Holsteins, Ravenshoe, Queensland. Photograph: Simon Tognola

“Typically, the Megs are a slower maturing cow,” he says. “Despite their age, they consistently hold onto a very youthful udder, and do it every time, developing with every lactation – across generation after generation.”

Evidence of their consistency and longevity now spans 60 years and eight consecutive generations to the foundation, Baranoah Meg EX-1E 2*. Bought by the Shearers as a 4-year-old, Baranoah Meg produced an additional 12 lactations at Wyoming Holsteins, calving for the last time at 19 years of age. She was described by Charlie’s daughter Janelle Wenham (Jacasha Holsteins) as a “neat little no-fuss cow” – an observation also made by Henry of his Megs.

“Breeza Meg is just one of those cows that is never a problem, gets in calf easily, and

just does the job,” he said.

For Henry, reaching this milestone with Breeza Meg is a real achievement. He also noted that every generation was born naturally (without ET), which he believes further demonstrates the ability of the Megs to replicate their superior attributes.

Over the decades, there have been many branches of the Megs, producing many show Champions and influential herd sires across multiple states. Henry hopes he can continue the consecutive Excellent line at Bevandale, with Breeza Meg already providing several promising daughters.

“Continuing this Excellent line and reaching the 7th generation was something my dad (John Bevan) worked hard to achieve – so reaching an 8th generation now is a real tribute to him,” Henry said. **HJ**

Advertisers’ index

ABS.....	2
AgriGene.....	7
Coprice.....	23
DeLaval.....	9
Genetics Australia.....	28
Herd 23.....	20
NZ Holstein.....	27
Provico.....	55
Semex.....	56
ST Genetics.....	15
TLG.....	39
WWS.....	4

HOLSTEIN JOURNAL ADVERTISING

Advertising enquiries:
phone Amanda Glossop on 0409 926 429 or email aglossop@holstein.com.au

Editorial enquiries:
phone Lee-Ann Monks on 0419 349 244, or e-mail lmonks@monkscom.com.au

Deadlines: Summer 2022 issue

Advertising bookings: Wednesday 26 October
 Advertising material (copy for layout): Wednesday 26 October
 Advertising material (finished artwork): Wednesday 2 November
 Editorial contributions: Wednesday 26 October
 (e-mailed to lmonks@monkscom.com.au or phone 0419 349 244)



Essentially...

ProfeSTART® COLOSTRUM

MULTI-SPECIES COLOSTRUM SUPPLEMENT

ProfeSTART Colostrum Supplement is formulated to ensure neonatal newborns receive valuable nutrition, immunity and antibodies needed to survive. Contains dried Australian Bovine Colostrum and enhanced with Lactoferrin, Lactoperoxidase, MCT and FOS. Specifically formulated to ensure all ingredients DO NOT inhibit the uptake of IgG antibodies.

THE ProfeSTART ADVANTAGE

- ▶ Non-medicated formulation based on global research, development and local innovation (data on file)
- ▶ Formulated and manufactured by animal nutrition specialists
- ▶ Unsurpassed product quality, performance and technical support
- ▶ Endorsed by farmers and industry specialists
- ▶ Available from leading rural resellers nation wide

BENEFITS

- ▶ **Application** – convenient, easy-to-use formula
- ▶ **Performance** – rapid immunity boost; does not inhibit uptake of IgG antibodies (data on file)
- ▶ **Price** – best value for ultimate composition and performance



ProfeSTART®

1300 380 343
info@provicorural.com.au
www.provicorural.com.au

 **ProviCo**
RURAL

KINGS-RANSOM DROPBOX

0200H012399

HIGHJUMP x CASPER x DELTA



+513 BPI

+2938 GTPI

+101 Overall Type

+3.16 PTAT

+108 Mamm. System

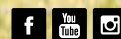
+3.09 UDC

SOURCE: ABV(g)s 22*AUG and CDCB-G & HAUSA-G / 08-22



Office & Warehouse: 2 Station Street, Maddingley Vic 3340 | Postal: P O Box 748, Bacchus Marsh Vic 3340

Phone: 03 4367 7841 | Email: semex@semex.com.au



www.semex.com.au