

# Holstein Journal

AUSTRALIA

AUTUMN 2024



**International  
Dairy Week**

**Master Breeder  
profiles**

**Cow Family  
– Kaloola Bettys**

LEAD INNOVATE DELIVER



# Dreambig

Proving that when you dream big anything is possible

ABV 12/23 75% Rel		Daughters: 30 Herds: 9	
BPI	378	Milk	392
HWI	383	Protein kg	19 0.17%
SI	648	Fat kg	28 0.17%
ASI	158		

HEALTH AND FERTILITY			
SCC	142	DTR FERT	111
MASTITIS RESISTANCE	104	CE	102
SURVIVAL	109		

SAMARITAN x Granite x Delta  
KINGS-RANSOM S DREAMBIG  
Bull ID: 94H019526



- + The proven production sire with 100% GP+ daughters
- + High semen fertility



**Out Now!**

Australian Dairy Sire Directory

US 12/23 88% Rel		Daughters: 42 Herds: 27	
Type			3.14
Udder			2.14
Feet and Legs			1.37
Stature			2.88
Strength			1.45
Body Depth			2.41
Angularity			3.55
Rump Angle			0.75
Thurl Width			2.74
Legs - Side View			0.80
Legs - Rear View			1.84
Foot Angle			1.62
Feet and Legs			1.92
Fore Udder Att.			2.25
Rear Udder Att. (H)			3.08
Rear Udder Att. (W)			4.14
Udder Cleft			2.43
Udder Depth			1.32
Front Teat Pl.			2.35
Rear Teat Pl.			2.34
Teat Length			0.44





**Holstein**  
AUSTRALIA

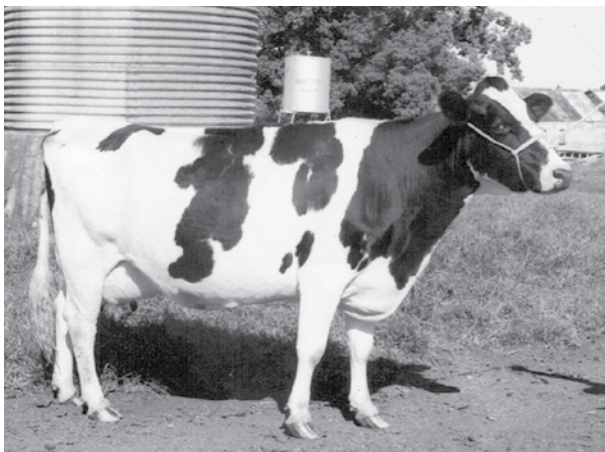
# Contents



10 Australian Dairy Youth launched



14 Mitch Holsteins



22 The Betty Cow Family

2024 off to a flying start .....	5
Melbourne to host 2028 World Holstein Friesian Conference .....	6
Welcome to the HA Board! .....	9
Australian Dairy Youth launched .....	10
Stone earns NZ scholarship honour .....	11
Showing the way to a dairy career .....	12
Future generations front of mind at Mitch Holsteins.....	14
Gilmore Holsteins marks centenary.....	16
<b>Master Breeders</b>	
Fantasia .....	20
Brampton Park.....	21
<b>Cow Family: The many Excellent branches of the Bettys.....</b>	<b>22</b>
<b>International Dairy Week</b>	
Holsteins sweep IDW supreme titles .....	26
Returning reserve claims R&W grand champion title.....	30
IDW Sheri Martin Youth Showmanship .....	34
Confidence and consistency win through for Western District youth.....	35
Caught in the act at IDW .....	38
Call for women to care for their health .....	40
<b>Classification Tour results 11/11/2023 to 05/03/2024.....</b>	<b>42</b>
<b>Last Word.....</b>	<b>46</b>

The Australian Holstein Journal is the official publication of Holstein Australia Inc. Content is copyright and reproduction without permission of the publisher is forbidden. Opinions and views expressed or implied are not necessarily those of Holstein Australia or the publishers and responsibility for the validity or accuracy of any statement, and content of any advertisement, lies solely with the author or advertiser.

Re. No: A14883U ABN: 87 455 118 302

Holstein Australia  
AgriBio, 5 Ring Road, Bundoora Victoria 3083

Produced by Monks Communication on behalf of Holstein Australia  
Editor: Lee-Ann Monks  
Layout: SUBStitution Pty Ltd  
Advertising: Amanda Glossop: 0409 926 429  
Printed by Litho Art, Darra, Qld

**COVER:** Brenton and Ellie Thomas of Instyle Holsteins, from Cooriemungle in western Victoria, with their International Dairy Week Grand Champion Dairy Cow, Instyle Solomon Dahlia EX-91-1E.

Holstein Australia Office: Ph: 03 9835 7600

[www.holstein.com.au](http://www.holstein.com.au)



Terra-Linda

799HO00074



# ROCKET

PARFECT X VG-88-3YR KING DOC X VG-85-2YR CRACKSHOT X VG-86-3YR X VG-87-3YR X VG-87 X VG-88  
X "DEBUTANTE RAE" EX-92-2E 3\* GMD DOM X EX-90 DOM X EX-96-3E 5\* GMD DOM X EX-94-2E GMD DOM  
X EX-90 30\* GMD DOM X ROXY EX-97-4E 6\* GMD X EX-90 6\* GMD X VG-85 5\*

14 EX & VG DAMS

The only A2/A2 BB bull available over  
+3500 GPA LPI & +12 Conformation!



- ✓ +3569 GPA LPI
- ✓ +2924 GTPI
- ✓ +12 Conformation
- ✓ +3.12 PTAT
- ✓ +1547 Kg Milk
- ✓ +77 Kg Fat
- ✓ Outstanding Feet & Legs
- ✓ Low Rump Angle



Blondin  
SIRE



**Agri-Gene Pty Ltd**

123-125 Tone Road, Wangaratta Victoria 3677

Ph: 03 5722 2666 Fax: 03 5722 2777 Email: [info@agrigen.com.au](mailto:info@agrigen.com.au) [www.agrigen.com.au](http://www.agrigen.com.au)







## 2024 off to a flying start

The first two months of the year have been very positive for the Association. January was a massive month for registrations and International Dairy Week provided a focal point for a group of cows that display just what the Holstein breed can offer. Congratulations to all Holstein exhibitors who took part in IDW.

### Live export

When I think back to this time last year, we were looking at a situation where both volume and prices for live export Holstein heifers had been significant, but the future was less clear. That unclear future did turn into a significant decline in the number of heifers being exported. There was, however, an uptick in the number of heifers exported over summer.

Currently the level of live export activity on the horizon is again difficult to predict. We certainly understand live export is a big contributor to the Association and members' bottom line, and the Board has its eye on managing this challenge over the short and long term.

### Software updates

Holstein Australia staff have been testing two new IT systems over past two months. Changes to ILR Online member portal will help members who enter their animals directly into the database via the website. This new system will offer an easier way to enter animals into the database and will also enable members to easily add a photo to the animal's registration.

The second update is to the software that drives classification which is currently being field tested with the view to implementation by mid year. The software and hardware behind the classification system have served HA and members well but an update has been needed for some time.

While the classification process will remain the same, members will see new and improved reporting. In addition, improved dataflow methods on the back end of the system will result in easier and quicker

setup pre-visit. In turn, post-visit report delivery times will be reduced and reports easier to read and assess.

These updates also involve upgrading base platforms so that they are easier to add new reports and services in the future.

### Member initiatives

We are already starting to see the benefits from the newly-formed HA Member Advisory Committee which has met twice so far.

Over the coming months HA will be undertaking a promotional tour to coincide with the introduction of the new classification software following significant input from the Member Advisory Committee. Also, with the full support of the Committee, an Active Sub-Branch Program is being put in place. This will see HA staff work with sub-branch volunteers to identify ways to help attract and retain active members and provide practical on-the-ground support.

The Committee has also had input into the timing of HA competition finalist and winner announcements, with the time between finalists announced and winners recognised extended to maximise time for members to promote that they are finalists. See page 8 for details.

Member Advisory Committee	
Name	Sub-branch
Brent Mitchell (Chair)	North West Victoria
Ron Chittick	Central & West NSW
Lachlan Fry	Western Australia
Justin Johnston	East Gippsland
Lawrie Flannagan	Riverina
Max Hall	Northern Victoria
Toria Patten	West Gippsland
Angela Tweddle	South East SA
Rob Walmsley	South Australia
Tom Otton	Far South Coast NSW
Daniel Redgrove	Hunter Valley NSW
Rhys Jansen Van Beek	Western Districts
Gino Pacitti	Board representative
Phil Daniel	Board representative

Key tasks for the Member Advisory Committee include ensuring member feedback is appropriately addressed, providing a representative forum for members to contribute to HA programs and activities while increasing membership value.

Every Holstein Australia Sub-branch can put forward a Member Advisory Committee representative. If your sub-branch is not currently represented on this committee and you would like to be involved, talk with your Sub-branch President or Secretary or contact me directly.

### Coming soon

The busy start to the year looks set to continue. With the roll out of our two software updates underway and getting our classification promotional tour and Active Sub-branch Program up and running, we're already looking ahead.

On the IT front, a focus will be identifying simple methods to make data extraction from milking machine software packages more straightforward, enabling members to make best use of data they already capture.

In the lead up to DataGene's National Breeding Objective (NBO) survey, HA will be engaging with members during May and June to hear their views on breeding indices and their needs into the future. This feedback will be provided to DataGene for consideration as part of the NBO review process.

On a personal note I'd like to thank our Member Advisory Committee members for their feedback from members and input into the year ahead. I'd also like to acknowledge and thank staff, particularly our Members Services Officers, for the hours they've put in over the past couple of months to deliver some great results. **HJ**



# Melbourne to host 2028 World Holstein Friesian Conference

**H**olstein Australia is delighted to announce it will host the World Holstein Friesian Conference in Melbourne in January 2028.

Holstein Australia President Gino Pacitti said it will be a great opportunity to showcase Australian Holstein genetics on the world stage.

“Australia, with its wide range of grassland and mixed farming systems, is one of the best places to showcase the versatility of the Holstein cow to Holstein breeders from around the world,” Gino said.

“Melbourne is the capital of our largest dairy-producing state and an ideal place with direct international flights from key cities around the world and easy access to prime dairy regions and Holstein Australia member herds.

“With the input and support of our new Member Advisory Committee and HA staff we’ll be able to create a world-class event that shows Australia and the Holstein breed in the best way possible. It’s also a fantastic opportunity for our members to meet breeders from around the world in their own back yard.”

### Plans well advanced

While 2028 may seem a long way off, plans for the World Holstein Friesian Conference are already taking shape. Working together with the Melbourne Convention Bureau, International Dairy Week and Holstein Friesian New Zealand, a provisional program has been put together.

As well as experiencing the best that Melbourne has to offer, HA members and international visitors will have the opportunity to visit member herds in west and northern Victoria, take part in special WHFF events at International Dairy Week and visit New Zealand, taking in the NZ Dairy Event and Holstein Show.

Along with visits to Holstein breeders in some of Australia’s prime dairy regions, there will be many opportunities for Australian and international WHFF delegates to visit some iconic Australian sites.



A pre-conference tour will take visitors along the Great Ocean Road before visiting member herds in Victoria’s Western District and the World Heritage listed Budj Bim Cultural Landscape, home to the Gunditjmarra people for six millennia and site of the world’s oldest aquaculture system.

The Grampians National Park, home to the largest number of significant and ancient Aboriginal rock art paintings and shelters in southern Australia and Victoria’s Yarra Valley Wine Region are also on the tour list.

Holstein Australia CEO Rohan Butler said he and the Board were looking forward

to working with members to create a program that really resonated with the international Holstein community and showed what Australian Holstein genetics has to offer.

“There’s a lot of detail to be put in place, from refining and developing the conference theme to deciding on topics and speakers and a host of other activities to create a memorable event for our own members and delegates from every Holstein association around the world.” **HJ**

*Keep up to date with all our WHFF 2028 news and register your interest by sending an email to [WHFF2028@holstein.com.au](mailto:WHFF2028@holstein.com.au).*

Tentative program: 2028 World Holstein Friesian Conference	
Wednesday 13 - Sunday 16 January	Tour: HA Master Breeder herds, Great Ocean Road, UNESCO World Heritage recognised Budj Bim Cultural Landscape, and Grampians National Park
Sunday 16 January – day	WHFF Board Meeting
Sunday 16 January - evening	WHFF 2028 Conference Welcome Dinner
Monday 17 – Tuesday 18 January	Accompanying Persons Tours (Melbourne and Yarra Valley)
Monday 17 January - day	WHFF Conference & General Assembly Day 1
Monday 17 January - evening	WHFF 2028 Gala Dinner
Tuesday 18 January - day	WHFF Conference & General Assembly Day 2 (followed by WHFF Board Meeting)
Tuesday 18 January - evening	Melbourne Cultural / Food and Wine Experience
Friday 21 – Friday 28 January	Optional – New Zealand 2028 World Holstein Conference Post Tour hosted by Holstein Friesian New Zealand taking in herd visits and the New Zealand Dairy Event and Holstein Show



# Create the FUTURE SALE



## STG Create the Future Sale Tops at \$36,000 Highest average seen in Australia for a Multi Breed Sale

Yet again the STG Create The Future Sale at IDW saw a magnificent crowd on site at Tatura along with over 770 viewing online at Stocklive from around the World.

Auctioneer Brian Leslie OAM stated the sale average was a new record for an All Breeds Sale and was the second highest of all sales at IDW in it's 34 year history.

**HOLSTEIN: \$13,238      JERSEY: \$6,667      AYRSHIRE: \$9,667**  
**ILLAWARRA: \$9,333      BROWN SWISS: \$15,000      GUERNSEY: \$10,000**  
Overall a very successful average of \$11,350 and a total clearance of \$454,000

It is pleasing to note that the 16 lots sired by STG sires average an incredible \$11,437.

Thanks again to all the Australian Breeders for submitting pedigrees of extreme quality to achieve these outstanding results. We wish all the purchases every success with their selections.

### STG Create the FUTURE SALE 2024





# 2024 Competitions and Awards

## Distinguished Service Award

Recognises sustained commitment over an extended period to HA, both within and beyond the member's designated role.

Closing date: 30 June 2024

Winner announced: Holstein Highlights '24

HA contact: John Crowther

Email: [awards@holstein.com.au](mailto:awards@holstein.com.au)

Phone: 03 9835 7600

## Semex-HA All-Australian

A national photographic competition that recognises excellence in conformation and showing.

Closing date: 31 May 2024

Winners announced: Holstein Highlights '24

HA contact: Celia Evans

Email: [awards@holstein.com.au](mailto:awards@holstein.com.au)

Phone: 03 9835 7600

## Master Breeder Award

Recognises the long-term achievement of individuals who have bred at least 300 registered animals over a minimum of 20 years.

Closing date: 30 June 2024

Awards announced: Holstein Highlights '24

HA contact: Celia Evans

Email: [awards@holstein.com.au](mailto:awards@holstein.com.au)

Phone: 03 9835 7600



## Cow of the Year

Recognises all-round excellence in production, classification, breeding and overall contribution to the Australian Holstein breed.

Closing date: 31 May 2024

Winner announced: Holstein Highlights '24

HA contact: Ally Bird

Email: [awards@holstein.com.au](mailto:awards@holstein.com.au)

Phone: 03 9835 7600

## IDW Youth Challenge

A competition involving all aspects of the show ring (clipping, judging and handling) and teamwork.

Held annually at International Dairy Week

Entries close mid-December each year

HA contact: Amanda Glossop

Email: [youth@holstein.com.au](mailto:youth@holstein.com.au)

Phone: 03 9835 7600

## Semex-Holstein Australia On Farm Competition

Unlike conventional livestock judging events, cattle are assessed for their structural correctness on their home property.

Closing date: Each Sub-branch conducts its own competition in spring. The winners are then 'over-judged' to determine regional or state champions, with the results announced at events held in each state during November and December. Winners announced: Holstein Journal (Summer)

Contact your local Sub-branch or Head Office

Email: [enquiry@holstein.com.au](mailto:enquiry@holstein.com.au)

Phone: 03 9835 7600

# Welcome to the HA Board!

Two new directors, have been appointed to the Holstein Australia Board, following a nomination and election process held during December 2023. They are Phil Daniel and Bryan Dickson.

## Phil Daniel

Phil Daniel owns Cleveland Holsteins in Northern Victoria, operating a 180-cow herd housed all year round in a barn and fed total mixed ratio on an adjacent feed pad. Under this intensive system the cows average 10,500 litres and 700 kg of milk solids.

As a Holstein breeder, Phil is firmly grounded in commercial reality. He wants to breed long-lasting, profitable cows, with a focus on balanced and functional type, particularly around udders and rumps.

Phil said his vision was for a strong and robust Holstein Australia into the future that always has members needs front and centre at all industry tables.

"As a lifelong dairy farmer with both on-farm and off-farm business interests I'm a natural problem solver," he said. "At a time when the Association and our industry are facing many challenges I believe we need to operate with integrity and accountability and communicate clearly with our members and stakeholders, and be willing to take the tough decisions when required to meet any challenges ahead.

"It's a real honour to be elected to the Holstein Australia Board by my peers, and I'm looking forward to representing their interests as the Association grows and develops into the future," he said.

Phil has been actively involved in the Northern Victoria Sub-branch for the



Phil Daniel

past five years, including three of those as President, along with serving on the Breed Development and Conformation Committee from 2021-2023.

Cleveland Holsteins is very much a family affair, with Phil's wife Samantha, son Aiden and daughter Mikeala all actively involved in running the farm.

## Bryan Dickson

Bryan and Jo Dickson own Emu Banks Holsteins in Victoria's Western District, milking 850 cows with feed base of pasture, silage and grain.

Having switched from a cross-bred herd to pure-bred Holsteins in 2002, Bryan became an early adopter of genomics and have used it successfully for many years. The whole herd is classified, "whether good, bad or indifferent."

Like Phil Daniel, Bryan's focus is breeding Holsteins fit for commercial reality.

"By far the majority of the Association's members are what I would term commercial members. To run successful businesses, they need Holstein cows that deliver consistently in the dairy and pay their way" Bryan said.

"I believe we need to ensure members understand and can use the Association's services effectively to contribute to the success of their businesses. For example we need to effectively promote a real understanding amongst member and non-member farmers of the economic benefits of registering Holsteins.

"Another real focus for me is the future of the dairy sector. Youth development



Bryan Dickson

is one of the most important things we should be working on, particularly youth involvement with registered Holsteins and the registered side of the industry. I think we have a real opportunity in this space at the moment with the majority of the dairy breed associations getting together under the Australian Dairy Youth banner to develop education, training and skills based programs."

A former Breed Development and Conformation Committee (BDCC) member, Bryan was previously Chair and long term director of DemoDAIRY and served a three year term on the Genetics Australia Board. He is also actively involved in HA's Western District Sub-branch.

All four of Bryan and Jo's daughters are actively involved with the family business. Twins Leah and Anna are at home on the farm while studying Year 12, with older sisters Rachel and Jacque working off-farm.

Holstein Australia Federal President Gino Pacitti welcomed Bryan and Phil to the board.

"They are both firm believers in the commercial benefits that stud breeding can bring to all dairy farmers and have both been advocates for this over many years," Gino said.

"I am looking forward to working with them over their initial three-year terms. The passion, enthusiasm and knowledge they bring to the table further strengthens the Board and I know they are keen to get out and meet as many members as possible in their new roles." **HJ**



# Australian Dairy Youth launched

**A**ustralian Dairy Youth was launched in March. The initiative was set in motion by Holstein Australia and Jersey Australia to bring Australia's dairy breed associations together to develop a national all breeds youth program.

Australian Dairy Youth (ADY) has one simple objective: to support the development of Australia's next and future generations of dairy farmers and industry leaders through programs that grow and nurture farming and leadership capabilities.

Speaking at the new venture's launch, held at the Gippsland Dairy Youth Show, ADY's Committee Chair, Frances Hayden, said one of the key things for her was that the breed associations collaborated.

"We've each spent years trying to do the same thing separately, develop similar youth programs with limited time, money and varying degrees of success. Working together we are stronger; we can reach

The founding members of Australian Dairy Youth are Holstein Australia, Jersey Australia, Guernsey Cattle Society of Australia, Illawarra Cattle Society of Australia, the Australian Red Dairy Breed and Brown Swiss Australia.

Committee members are Frances Hayden (Chair), Robert Anderson (Vice-Chair), Brian Parker, Owen Daley, Paul Cocksedge and Jacqueline Soares.

more people and we can do more," Frances said.

The first two ADY programs are the Australian Dairy Youth Academy and a series of Creative Content Internships, with more programs to be announced shortly.

## Australian Dairy Youth Academy

To be held over 2½ days this September in Melbourne, the Academy will provide an educational and informative learning program to enhance and grow farm

management skills and explore on and off-farm opportunities for those embarking on a dairy career. The program will include key dairy farm management skills along with sessions exploring career pathways and opportunities.

## Creative Content Internships

This program will provide six internships across journalism, photography and graphic design to source, develop and publish content in Australian registered breed association journals and online, providing young dairy professionals with the opportunity to enhance their skill sets and career opportunities beyond the farm gate.

HJ

**To find out more visit the Australian Dairy Youth Facebook page.**



Vice Chair Australian Dairy Youth Robert Anderson and ADY Chair Frances Hayden with Glen Barrett, Jersey Australia, and Adam Sawell, Holstein Australia.

# Stone earns NZ scholarship honour

**T**ammy Stone, (Hawthorn Glen Holsteins, Northern Victoria) attended the NZ Dairy Event in late January as the recipient of 2023 Northern Victorian All Breeds Youth Scholarship

The scholarship is an initiative of the Northern Victorian Sub Branch, with sponsorship from ST Genetics. She received it in recognition of her commitment to developing her judging and showmanship skills.

Tammy said she was excited by the opportunity. "I was very eager to learn more skills in showing cattle," Tammy said.

In NZ Tammy worked with Isaac and Emma Kelson, Tom and Francesca Bennet and Harvey Verwaayen, while joining Robbie and Anna James and family of Joyclas Friesians, a family Holstein-Friesian operation for the past six generations. The family has been showing at the NZ Dairy event since 2009 and currently milks 300 cows on 150 ha at Linton, near Palmerston North on New Zealand's North Island.

Tammy spent four days helping prepare the show string and also led a number of Joyclas entries – including Tahora Doorman Largina, who placed second in the 4 Year Old In-Milk class.

Travelling with partner Nathan Smith (Hightop Holsteins), Tammy took a lot away from her scholarship trip.

"The biggest thing was the people I met and the friendships created," she said.

"I would recommend this opportunity to everyone; it was a great way for me to learn new skills and meet more people within the showing industry."

To qualify for the scholarship, participants were required to be actively involved in local shows around Northern Victoria over the Spring show season – with options including Cobram, Nathalia, Kyabram and Shepparton shows – and involvement in youth challenge teams and youth training days, which were possible thanks to the support of Woolworths Mooroopna.

The Northern Victorian All Breeds Youth Scholarship was created to encourage young people in the region to participate in local shows, while improving their skills and developing their passion for working with Holstein cows.

The younger age sections of the scholarship were won by Kaitlyn Joyce (Beclah Park Holsteins) and Jaxon Collins (Mangarra Lodge), with their prizes sponsored by Holstein Australia.

Applications for the next round of the Northern Victorian All Breeds Youth Scholarship will be opening soon. Interested participants are encouraged to follow the Northern Victoria Sub-branch of Holstein Australia Facebook page for details of upcoming youth days.



Tammy Stone led Tahora Doorman Largina to second place in the 4-year-old In-Milk.



Northern Victoria Sub-branch President Chris Collins presents Tammy Stone with her scholarship.

HJ



# Showing the way to a dairy career

As the CEO of Aurora Dairies, Ben James has come a long way since helping on weekends at a dairy farm when in primary school and later rearing a calf on a vacant block next to his family home in the Adelaide Hills.

Time at local dairy shows planted the seed for Ben's enviable career in professional farm management. He now oversees management of a portfolio of more than 48,000 dairy cows across 54 properties, spread throughout western Victoria, Gippsland, South Australia, Tasmania and New Zealand.

He believes breed societies and agricultural show societies play an important role in engaging and retaining a sustainable workforce for the dairy industry.

"We should never underestimate the benefits of showing dairy cattle," Ben said. "People get hooked on showing. It is a great way of attracting new people, and importantly, developing within them a passion for cows."

Labour shortages, urban sprawl and escalating land values continue to be a challenge for today's dairy farmers. Agriculture has lost favour as a career of choice, and potential new entrants are finding that their dream of farm ownership seems less and less achievable.

But with any new challenge comes new opportunity – and with new opportunities comes innovation.

Ben said there were many meaningful career alternatives in dairy, and he is challenging the traditional model of farm ownership as the ultimate career pathway.

"We need to proactively showcase dairy as a career of choice – and (dairy) shows are a good way to do this," Ben said. "We've got a lot of really great people in our industry doing some really great things, and it's our people who make our business successful."

Ben said that as a teen he was always busy preparing for his next show or calf day, or eagerly pouring over the bull catalogues and sale catalogues that arrived in the mail.

"I was always interested in ag, and I always loved dairy. Showing cows was a key part of fostering that passion."



Ben James

Ben didn't grow up on a family dairy farm but has a strong family history on both parents' sides of owning and operating agricultural businesses, including his grandfather who had a successful Corriedale stud at Parawa in South Australia. His enthusiasm for showing and breeding drove him to seek out his own opportunities, with a lot of help from David Whittaker, a local dairy farmer who supported his interest.

After completing a Bachelor of Applied Science Agriculture at the University of Adelaide, Ben's first job was as a farm hand for South Australian Master Breeders Clem and Lee Mason of Jervois Holsteins. Ben said the Mason family were incredibly supportive, and he lived with them on their farm at Ashville between Meningie and Taillem Bend. While working there, Ben was exposed to the Mason's passion and involvement in showing cows, including Clem's brother Frank and the legendary Holstein champion, Jervois Inspiration

## Aurora Dairies

- 48,000 dairy cows
- 28,000 dairy heifers
- 280 million litres annually
- 54 dairy properties
- 23,000 hectares
- >400 employees

Gretchen EX-1E 25\* 1xEP 1xM.

At university in 1991 Ben worked on the Roseworthy Agricultural College dairy farm for the renowned breeder Jack Bramley including leading his champion cow at Adelaide Royal, Roseworthy Warden May EX-4E STP 10\*.

"I felt quite privileged when Jack let me lead her," Ben said. "Jack could be a tough taskmaster – but I always had a tremendous amount of respect for him."

Ben feels incredibly fortunate to have had industry icons like Jack Bramley and the Mason family as his mentors. He is now hoping he can 'pay it forward' by sponsoring classes at Adelaide Royal and International Dairy Week and implementing several university scholarship programs for young people through Aurora Dairies.

For Ben, the highlight of the shows was getting to work closely with the cows. He took pride in learning their individual personalities and preparing them to look their best on show day.

"Dairying can be hard work – and we have to acknowledge that," he said. "But it's that passion for cows that gets you. Once you've got it, everything else – the early mornings, the long days – disappears."

Ben is a strong advocate of professional careers in operational dairy management and says the key to attracting and retaining a sustainable workforce in agriculture is to promote alternative career pathways outside of farm ownership.

"As an industry, we almost treat people like second-class citizens if they don't want to be a farm owner," he said. "But to sell the dream of becoming a 'farmer' simply through farm ownership is quite limiting.

"Obviously we must not exclude anyone who wants to be a farm owner or an equity partner – but there are many alternative pathways that can provide great avenues for success."

Ben said organisations such as Aurora Dairies are using their graduate programs, AgCAREERSTART and AgFutures to attract and cultivate new entrants and is capitalising on opportunities such as work experience and holiday work to

encourage new entrants to work alongside experienced farm managers to provide on-the-job education and training.

He believes that creating a workplace environment built around strong engagement and empowerment will allow people to capitalise on their individual interests and strengths.

By doing this, he said, dairy can become an industry of choice, and attract a sustainable workforce with a diverse skillset.

"If we want an industry that can support and develop its people, then we must treat dairy like any other traditional career pathway. We need a structure around education and training that can be clearly mapped out and linked back to career pathways and progression," Ben said.

He is critical of those who question the benefits of training their staff or believe it is a wasted investment if they train an employee who then leaves.

"What happens if you don't train someone, and they stay?" Ben asked.

"Dairying is a very people-orientated business, and people will move through your business. If they move onto something better, then that's fantastic. But if we don't find a way to bring new people into the industry, then we just end up shuffling deck chairs.

"It is a great industry to be involved in, I feel very grateful for the opportunities and experiences it has provided, and the great people that I have been able to meet and work with". **HJ**



Ben leading Roseworthy Warden May at Adelaide Royal Show 1991.

## HA members added to GA honour board

Three Australian Holstein breeders have been added to the Genetics Australia Honour Board.

Calister Holsteins, Wilara Holsteins and Vala Holsteins joined an elite cohort when their names were added to the board during the GA 2024: Today, Tomorrow and Beyond conference at Geelong on March 18.

GA CEO Anthony Shelly said the Honour Board, which takes pride of place in the GA boardroom, highlighted the breeders who had made a significant contribution to genetic improvement in Australia.

"Our latest Holstein breeders each have different approaches to their breeding, yet all three have made a massive contribution to the growth of the Holstein breed in Australia," Anthony said.

Selection is based on the impact their bulls have made on the Australian dairy population, and combines both daughter proven and genomic performance.

### Vala

Vala Holsteins has supplied bulls such as MIRAND, EMMETT, ESCHER, LEMONADE, BEACON, CHILLI, EPIC, LENN, MRRIGHT and MDOUGLAS. Owner, Alex Arena, said he was delighted to be recognised for his bull's achievements.

"Being a Holstein breeder is immensely rewarding considering the improvements that breeders have made to the quality of the modern dairy cow for the benefit of all dairy farmers in Australia," he said.

Alex said he was especially proud to have bred many successful polled bulls that helped address animal-welfare concerns around calf dehorning.

His aim now was to address the concerns around climate change and creating opportunities to introduce genetics with greater heat-tolerance into dairy herds.

### Calister

Calister Holsteins has contributed the bulls MAEBULL and DECIPHER into the GA program. Their ongoing popularity among commercial dairy farmers in Australia and overseas is proof that Australian Holsteins



Craig Lister, Calister Holsteins, with an original MAEBULL daughter, Calister Mae Lady 6664 EX-90-1ESTP.

are competitive with bulls from anywhere in the world.

Owner, Craig Lister, said he never intended for his breeding to have that level of impact. "We just wanted cows that were long-lived and productive. It's humbling that our genetics have been able to have a contribution beyond our farm gate."

### Wilara

The Wilara prefix is well recognised for producing bulls that have been valued by farmers around the country, including GILES, JOPPO, LUKIE, TINAMBA and TWITTER.

Wilara Holsteins owner, Trevor Henry, said he tried to breed an animal that could maintain a high level of total milk solids. He was particularly proud of his bulls for representing multiple cow families, either bought into the herd or developed through the appendix system.

"At the moment we have six different cow families putting bulls into AI, including four developed at home," he said. "I think it's only the beginning of the journey for our contribution to the AI industry." **HJ**



Trevor Henry, Wilara Holsteins, with Wilara Booth Jo VG86, dam of JOLET and maternal sister to GILES.



# Future generations front of mind at Mitch Holsteins

Third-generation dairy farmer Brent Mitchell believes the future of the industry is with the next generation, so he feels a responsibility for playing his part to help foster a love for registered cows and dairying.

"I didn't know anything about the stud industry until I was 18 and there weren't a lot of opportunities to learn. With Kim and I not having our own children to pass things along to, this is our way to give back," Brent said.

While Brent and Kim often provide heifers for young people to lead at local shows, it is their commitment to the annual Holstein Australia Youth Challenge at International Dairy Week (IDW) that showcases the level of support they genuinely have for young people in the industry.

Each year, the Mitchells prepare 12-16 heifers for the clipping component of the Youth Challenge.

"It does take a lot of effort to halter break and prepare such a large group of heifers," Kim said.

"But we take pride in preparing heifers who will hopefully be quiet and co-operative and provide the participants in the Youth Challenge with a reliable group of heifers to work with."

The generosity for youth doesn't stop with Mitch Holsteins; local businesses Nutrien Echuca and Rabar Nutrition from Moama both jump on board to help cover the transportation costs of the heifers to and from IDW.

"In the end, it is all about the kids having a positive experience and hopefully then they will be more inclined to want to continue in the industry," Kim said.

Further to their commitment to dairy youth, Brent has stepped into the role of Chairman of the newly former Member Advisory Committee, with the vision to support fellow Holstein Australia members to get the most out of the membership and to assist in shaping the organisation in a positive way moving forward.



Brent and Kim Mitchell with 2017 Intermediate Champion Mitch Aftershock Irene.

## Mitch Holsteins

Based at Bamawm in North-West Victoria, Mitch Holsteins has 300 milkers on a family-led operation whose focus is pure and simple: "We love our registered cows and believe that if we look after them, they will look after us."

Brent's grandfather began with 60 head on a commercial farm, which grew to 120 head under Brent's parents. Having grown up with a passion for farming, Brent

---

*"We love our registered cows and believe that if we look after them, they will look after us."*

---

started his dairy career working in herd improvement and AI sales.

This role led him to return to farming, with he and Kim share-farming from 2011. Brent's motivation was to breed their own cows, rather than just helping other people develop their own.

Mitch Holsteins remains a family affair, with Brent's parents overseeing the heifer and fodder farm; supported by Kim's parents.

"We are so lucky to have the support from our families to do what we do. There are far too many people who don't have that opportunity, so this works great for us," Brent said.

The herd is fed on grass year-round, an achievement which Brent is proud of. "We love feeding cows well on grass and grazing 365 days a year as something really special in this day and age.

"We are working towards achieving 700 kg of solids. We have been so close, but that will be a big thing for us when we get there."

**Cow families**

The Mitchells are no stranger to breeding a quality cow, with one of their all-time favourites being 9-year-old Mitch Aftershock Irene EX-93-4E STP 2\* who won Intermediate Champion at IDW as a 3-year old in 2017. Aftershock Irene has bred her own Excellent daughter – Mitch Guthrie A Irene EX-90-2E, who herself has bred Mitch Solomon G Irene EX-90-1E (owned by Walkerbrae).

They have invested heavily in prominent cow families including the Barbies, Jemimas, Roxys, Sharlenes and Tonis.

Mitch Goldwyn Berri EX-90-3E, whose Grand-Dam is Regancrest-PR Barbie EX-92-3E, is the direct progeny of an imported embryo sired by Toys Hero resulting in Mitch Hero Berri-IMP-ET EX-90-3E STP 7\*. Hero Berri is the dam of two Excellent daughters – Goldwyn Berri EX-90-3E and Mitch Dempsey Barbie-ET EX-90-2E, along with 4 VG classified daughters (Mitch Crushed Berri VG88, Mitch Solomon Berri VG88, Mitch Tatoo Berri VG86 and Mitch Tatoo Berri 2<sup>nd</sup> VG85).

They bought into the world-renowned Roxy family with just 2 b-grade embryos, resulting in Mitchmantle Storm Roxy-IMP-ET EX-90-1E 12\*. She has an Excellent daughter of her own in Mitch Ice Roxy EX-90-2E LIFE1 and two Excellent granddaughters – Mitchmantle Roy Roxy-ET EX-90-2E and Mitchmantle Roy Edith-ET EX-90-2E 2\*.

Murribrook Shotime Tara-ET VG88 5\* has proven a valuable investment, with progeny including Mitch Outside Toni-ET EX-90-3E STP (Silver) LIFE1, while the Jemima family was introduced thanks to the purchase of Wade embryos from the IDW 1999 Intermediate Champion, Brooklane Belt Jemima VG89.

The Mitchells' first Excellent cow was also from this family – Mitch Durham Jem 2<sup>nd</sup> EX-90-3E STP Silver 1xM 1xP LIFE2. Her great-granddaughter Mitch Sabathia Jemma EX-90-1E 2\*, leads a highly active branch of the Jemima family today.

A descendant of the famous Rainyridge Tony Beauty EX-5E 2\*, is Mitch Chipper Beauty-IMP-ET-RED EX-90-3E STP 1\* LIFE1, whose daughter Mitch Latenite Beauty 2-ET-RED sold for \$10,000 at the Cherrylock Party at the Park sale in March.

Eclipse Goldwyn Adeen EX-90-3E STP 3\* 2xM 2xP LIFE2, bred from Aitkenbrae Starbuck Ada EX-94-2E, has proven a great purchase also, with a solid group of young heifers and cows on the ground.

The home-grown cow family, the Yoghurts, provided a 'pinch me' moment at the 2023 Victorian Winter Fair, when Mitch Tatoo Yoghurt VG87, was sought out for private purchase by Jim Strong and Linsand Farms.

**Registration**

"Moving forward, our goal is to work towards being able to register 100% of our cows. We are sitting at about 90% right now, so we are getting close," Brent said.

Kim and Brent plan to continue doing what they are doing – breeding solid cows and being actively involved in the registered Holstein space.

"Our ultimate achievement in time would be to attain our Master Breeder Award. It would be an acknowledgement of the hard work of our entire family and is something significant for us to work towards," Brent said.

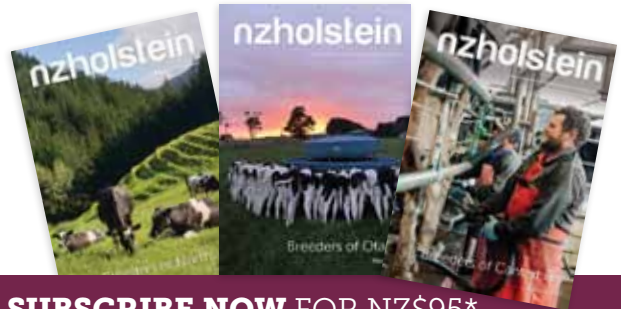
"In the end, we just love breeding great cows and we will always be grateful for the opportunity to do so."



The next generation at Mitch Holsteins includes these calves from the Barbie and Irene families.

**nzholstein**

Official publication of Holstein Friesian New Zealand



**SUBSCRIBE NOW FOR NZ\$95\***

Name: \_\_\_\_\_

Address: \_\_\_\_\_

\_\_\_\_\_

Town/City: \_\_\_\_\_ Postcode: \_\_\_\_\_

Country: \_\_\_\_\_

Phone: \_\_\_\_\_

Email: \_\_\_\_\_

Forward this subscription form or enquires to Anne Boswell  
a.boswell@nzhfa.org.nz, +64 27 394 3904 or post to  
Holstein Friesian New Zealand  
PO Box 9282, Hamilton 3240, New Zealand

\*Annual subscription, three issues per year, postage incl. Payment by bank deposit in NZD and must be exclusive of any bank transaction fees.





# Gilmore Holsteins marks centenary

This year, one of the most influential herds in the Australian Holstein herdbook celebrates 100 years.

Ingolston Holsteins was founded by Thomas Gilmore and his wife Mary in 1923 at Yarrowalla in Victoria's north west.

Their great granddaughter, Claire, is the fourth generation to manage the Ingolston herd, taking over from her retired parents Don and Dale Gilmore.

Don's brother Jim and his wife Dot live next door in the original family homestead built by Jim's grandfather Thomas in the early 1900s. There they established the two-time Master Breeder herd Ingoldale Holsteins and continued the Ingolston philosophy of breeding 'true-type' and long-lived Holsteins.

The Ingolston farm has not milked cows on a commercial basis since 2016, but Claire's enthusiasm for Holstein breeding persists. She maintains a select herd of cows and heifers that she uses for breeding and embryo programs, with any in-milk cow parked at a neighbour's farm.

Despite no longer running an active dairy farm, Claire said she was unable to let go of her love for dairy cows. She insisted it is unlike any other job, and she now indulges her passion by working as a relief milker around the local district.



Fourth generation and current manager of Ingolston Holsteins, Claire Gilmore.

"It's in my blood. Other jobs just don't give back like working with cows does," she said. "I love it. I love the routine and the rhythm. It's just simple."

The Ingolston stud name is a reference to Islington, the town where Thomas's father Andrew first settled when he emigrated from Ireland in 1856.

Thomas began his stud with three black

and white heifers bought at the Yorkshire Friesian stud dispersal of John Carter, from Marong in central Victoria.

The first female carrying the Ingolston prefix, Ingolston Dominion Grace, was born on 15 June 1925.

Within a few years of becoming a member of the Friesian Cattle Club, Thomas firmly established himself as a prominent figure



Don and Dale Gilmore, Ingolston Holsteins. Photograph: Chris Earl, Loddon Herald



Two-time Master Breeders Jim and Dot Gilmore, Ingoldale Holsteins.



Founder of Ingolston Holsteins and Holstein Life Member, Thomas Gilmore.

within the breed. He held executive roles within the Federal Council and Victorian State Council for more than 20 years, including two-terms as President, and was a Federal Life Member of the Holstein-Friesian Association.

His son, Ken, is also a Life Member and together they bred many male and female Holsteins that formed the foundations of some of the most influential Holstein bloodlines in the modern herdbook.

Thomas was an enthusiastic trader of cattle, sourcing bloodlines from across Australia and New Zealand.

### Prominent sires

He won the first of his many Champion Bull titles at Royal Melbourne Show in 1930, with a bull he imported from New Zealand, Cordyline Cremona Pontiac.

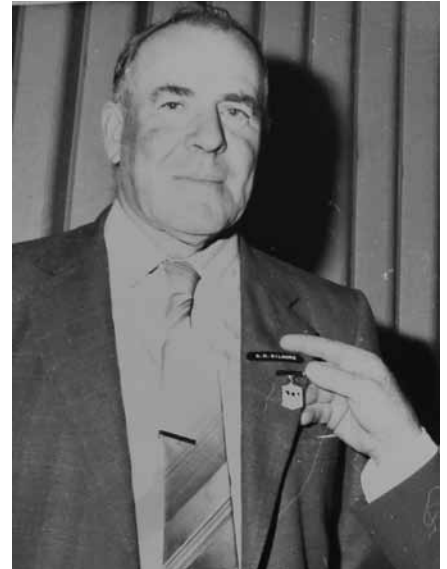
Soon after, a son of Cremona Pontiac, Ingolston King Pontiac, was crowned Champion Bull at Sydney Royal, reigning from 1937-1939, and again in 1941 for his owner J. Lamond of Nowra NSW.

Ingolston quickly became a household name in the Holstein community thanks to prominent sires Ingolston Statesman, Ingolston Sylvester, Ingolston Barry and the legendary Ingolston Squire whose ability to combine extreme udder quality and extreme milk production meant his progeny were highly sought after.

In the early 1930s, Thomas bought several lines of young cows from the distinguished Bolobek herd of O.J. Syme, who at the time was the owner of *The Age* newspaper in Melbourne.

Founded on New Zealand bloodlines, Bolobek Sophie (4392) laid the foundation for the renowned Ingolston Elgas, Edies, Saras and Petunias. Bolobek Salome (2365) was the matriarch behind many influential Holstein sires, along with the Star family at Ingolston and the Dollys at Loudon Hill.

Salome descendent, Ingolston R.J. Satellite, known commonly as the bull IOLS, reached the number 1 position on the Australian Breeding Value (ABV) ratings in the mid-1980s for combined fat and protein kilograms.



Second generation and Holstein Life Member, Ken Gilmore, Ingolston Holsteins.

In 1968, Ingolston Maryann EX-3E 1\* became Australia's first Holstein cow to be classified Excellent. She was a descendant of Ingolston Black Mooie, who, with her sister Ingolston Mooie Triumph, were the foundation behind many recognisable female cow families including the Jessicas at Elmar, the Tossettes at Wandilla, the Ditas at Juleanwes, the Paulines at Glenorleigh, and the Polkas and Pollys at Orchard Vale and Eagle Ridge – just a small sample of the many hugely influential maternal bloodlines that originate from Ingolston cattle.

These days, Claire's small herd includes several members of the original Ingolston E, S, R and O families, alongside her more recent investments, the Felicitys, Lauras, Dollys and Christinas.

She says the Gilmore breeding philosophy has changed very little through the generations with her emphasis remaining on dairy strength and balance.

"I like cows that can go out into a paddock, eat grass and produce milk without a fuss," she said. "It sounds simple – but to do it consistently, you need a strong and consistent maternal line."

Claire said her father, Don's, proudest achievement was breeding the first Holstein cow in Australia to classify Excellent seven-times. In January 2003, Ingolston R.K. Squeaky EX-7E STP Life 1 received her final E at 16-years-old.

"Squeaky was a most loved pet of everyone," Claire said.

Through the generations, the Ingolston

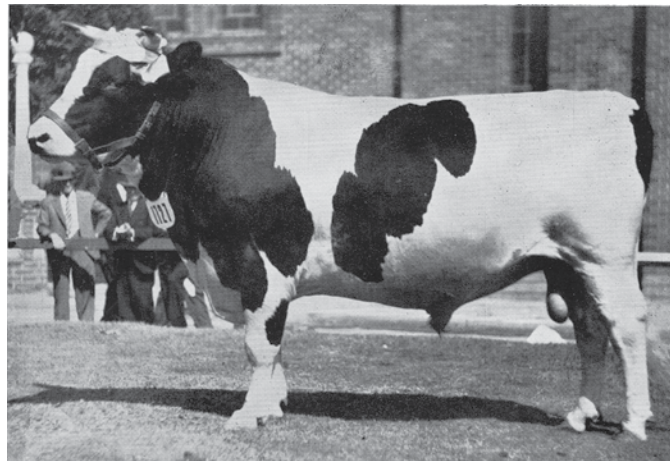


Australia's first Holstein cow to classify Excellent 7-times, Ingolston R.K. Squeaky EX-7E STP Life 1.





ABOVE LEFT: Australia's first Excellent Holstein cow – Ingolston Maryann EX-3E 1\*.



ABOVE RIGHT: Sydney Royal Champion Bull 1937-1939 and 1941, Ingolston King Pontiac, bred by Thomas Gilmore, owned by J. Lamond of Nowra NSW.

stud has branched out to include the prefixes Ingolmore, Hughes, Inglea and the two-time Master Breeder herd, Ingoldale.

For Claire, breeding is not about the accolades or the awards. It's about a love for her cows, and the satisfaction in seeing the continuation of her family's legacy through the many Holstein bloodlines established at Ingolston over the last century.

"I'm sure my great grandfather would never have thought his family would still be here 100 years later – and still breeding Holstein cows. I think it's a reflection of my forebears and what they created." **HJ**

RIGHT: The original export certificate for Cordyline Cremona Pontiac from New Zealand, August 1930.



RIGHT: Proud members of the North West sub-branch IDW 2024 Youth Challenge team, 5th generation, back left: Sophie Gilmore, bottom right: Brady Gilmore, Ingolmore Holsteins.





USDA JANUARY 2024

<b>TPI</b>	<b>MILK</b>	<b>FAT</b>	<b>PROT</b>
<b>2702</b>	<b>645</b>	<b>72 / 0.16%</b>	<b>45 / 0.09%</b>
<b>CE</b>	<b>PL</b>	<b>DPR</b>	
<b>+2.3</b>	<b>+1.0</b>	<b>-0.4</b>	

USDA Type Linear 01/24					
TPI 2702	NMS 560	G Dtrs G Herds 79%Rel			
Linear	-2	-1	0	1	2
Type					1.86
Udder Comp					2.44
Feet and Legs Comp					0.43
Stature					1.7
Strength					0.95
Dairy Form					0.95
Body Depth					0.76
Rump Angle					-0.53
Thurl Width					1.5
Legs Side View					0.53
Legs Rear View					0.58
Foot Angle					1.51
Fore Udder Att					3.68
Rear Udder Att H					3.12
Rear Udder Att W					2.17
Udder Cleft					0.9
Udder Depth					3.33
Front Teat Place					-0.05
Rear Teat Place					0.24
Teat Length					0.38

stantons Lyric-pp  
REMOVER-PP X BIGHIT-P X MONTANA

# Lyric-PP

## NEW RELEASE for 2024

A2A2 and Homo Polled, LYRIC-PP is backed by strength of cow family from Stantons Holsteins. Solid production with positive components, LYRIC-PP is a genuine type & udder improver who offers great value in 2024.



STANTONS LYRIC-PP

dam STANTONS BIGHIT MELODY P VG-85 2YR- #2 GLPI COW DECEMBER '23  
maternal sister STANTONS BUNDLE EXTRA VG-86 2YR - #1 GLPI COW APRIL '23



## Agri-Gene Pty Ltd

123-125 Tone Road, Wangaratta Victoria 3677

Ph: 03 5722 2666 Fax: 03 5722 2777 Email: info@agrigen.com.au www.agrigen.com.au







# Fantasia Holsteins

**Colin and Dianne Seidel  
Allandale, Victoria**

When Colin Seidel was deciding on a prefix name in 1982, his wife Dianne proposed 'Fantasia'; a tongue-in-cheek suggestion that his dream to own 300 head of stud cattle on 120 ha, was a mere fantasy. Fast forward to 2024: the Fantasia name represents 42 years of breeding, 1,000 head of stud cattle on 400 ha and the incredible achievement of Holstein Australia Double Master Breeder.

Colin's introduction to dairying came as a young share farmer in Meningie, South Australia – sparking the dream to one day own his own farm – milking a large herd of registered Holsteins.

Colin and Dianne bought the family farm in Allandale in 1994. They have now stepped back from active management of the farm, handing over to sons Will, Phil and Jason Seidel, supported by Will's partner Ollie and Phil's wife Alicia. The family operation is assisted by Phil and Alicia's children Georgia, Hannah, Lucy and Jake.

Milking 580 registered Holsteins and 60 Jerseys under the Pyelanda prefix, the Seidel's herd is fed a diet of primarily total mixed ration (TMR), which is set out daily by Colin's 14-year old grandson Jake.

Most of the fodder is home-grown; about 3,000 tonnes of hay a year - which is a mixture of annual ryegrass, clover, cereal and summer crops.

"We concentrate on providing our cows with the best feed combination we can, so they can perform at their best," Colin said.

**Farm facts**

**Land size: 400 ha**  
**Cows milked: 640**  
**Production Awards: 509**  
**Lifetime Production Awards: 104**  
**Females Bred: 3,520**  
**Classification: EX 49 VG 672**  
**Star Brood Cows: 21**  
**STP: 108**  
**Years in the Industry: 42 years (founded 1982)**  
**Generation: Currently 1st, 2nd and 3rd generations involved**  
**Important cow families: Bubs, Cupids, Elaines, Eves, Pickmes and Rustys**  
**Favourite bulls used: Baxter, Jedi, Supreme and Butlerview Matador**  
**Current bull team: Crushabull, Dreambig, Genie, Hancock, Hulu, Luster, Renegade and Sidekick**  
**First Excellent cow: Fantasia Renegade Melody EX-3E STP 10\* 4xEP 1xM LIFE5**

**Breeding**

The Fantasia breeding philosophy is to breed true-to-type cows that are functional – essentially cows that will last a lifetime.

"Longevity is probably our main breeding philosophy above all else," Colin said.

"While we invest in bulls to address particular traits, we are also not afraid to sample our own bulls."

The best example of the success of a home-grown bull is Fantasia Mississippi Storm EX – who sired 121 females for Fantasia, which included 3 x EX and 29 x VG daughters. Storm's dam, Fantasia Renegade

Melody EX-3E STP 10\* 4xEP 1xM LIFE5 was Fantasia's first ever Excellent cow and breeds back to Wellstrand Ultimate Melody EX-3E 17\*.

This focus on type has resulted in Fantasia breeding 62 Excellent cows, including Fantasia Blitz Edna EX-94-6E STP GOLD LIFE4 and Fantasia Goldfish Elaine EX-93-4E STP. The Cupids have been a prolific cow family – bred through the Appendix system from Fantasia Kingsley Cupid. The family now boasts 224 progeny, spanning 10 generations, including 7 Excellent and 43 VG classifications.

Fantasia Guthrie Cupid EX-91-4E STP 1xF LIFE1, is a family favourite, "She is an incredible cow; probably the best looking cow on our farm by a mile – with her open rib and great udder," Colin said.

The Cupids are only one of many cow families to be developed through the Appendix system, many of which were purchased from the farm that Colin originally share farmed for seven years before going out on his own. These families include the Eves, Rustys and Bubs.

**Double Master Breeder status**

The Seidels thought they were eligible for a Double Master Breeder Award but had a nervous wait to find out if it was a reality. "Our commitment to registering every heifer and consistently classifying has been a key to the Double Master Breeder achievement," Colin said.

The family understands why classifying and registering cows can be a lower priority when times get tough. But the gap created in pedigrees cannot be filled and has a flow-on effect to cows getting STP and Star Brood Cow awards.

"The Double Master Breeder is definitely something we are proud of; 40 years of prioritising registering cows. The fact we have been able to achieve this across multiple generations is quite an achievement," he said.

Planning ahead, promotion of the cows they have worked so hard to develop is on the radar for the Seidels, but their main goal remains to stay sustainable enough to ride the ups and downs of the industry for the next generation.

HJ



Colin Seidel with his sons, Will and Phil, with Phil's children Hannah, Lucy and Jake.

# Brampton Park Holsteins



## RB & H Mountford

### Southern Western Australia

Having grown up surrounded by Holstein cows, all Brad Mountford has ever wanted to do was to be on a dairy farm. He left school to work with his father, Ron, on their Rosabrook farm in southern Western Australia. In recent years Brad has taken over the breeding program.

They received their first Master Breeder Award in 2021 – a nod to those cow families invested in by Ron Mountford over the years. The second award is a testament to the breeding choices led by Brad, with a combined focus on type and production. “Brampton Park was established from key cow families that dad bought from around Western Australia. It is from those families that I have been lucky enough to be able to breed,” Brad said.

With up to 290 milkers, the herd is fed a combination of wheat, lupin and canola in the dairy, supplemented by hay and silage. The cows average 10,500 litres per lactation with the top ones producing 14,000 litres. The breeding focus is on tall, open-framed, big-bodied cows and developing cow families including the Maggies and Madelines, who boast a large number of their highest classified cows over a number of generations.

Both maternal lines of the Maggie and Madeline families breed back to Blawearly B Maggie VG86 4\*, with her daughter Brampton Park W.B Maggie EX-3E STP 6\* becoming a stalwart of the family.

W.B Maggie’s daughter, Brampton Park S.B Madeline EX-5E STP 3\* 2xEP 1xM 1xP LIFE4 bred a solid home-grown bull in Brampton Park Storm Max EX – who sired 46 daughters in the Mountford herd, including 1 Excellent and 15 VG daughters.

The longevity of the family is present in cows such as Brampton Park Lee Madeline EX-90-2E and Brampton Park BN Mitzie EX-90-1E, who is eight generations down the line from S.B Madeline.

Another of S.B Madeline’s daughters, Brampton Park K.J Madeline VG88 5\* 1xM LIFE1 bred both Brampton Park FT Madeline EX-92-1E 1xM 1xP and Brampton Park CE Madeline EX-90-3E LIFE2.

## Farm facts

**Land size: 220 ha and 198+ ha leased**

**Cows milked: Up to 290**

**Females Bred: 1,137**

**Production Awards: 1,108**

**Lifetime Production Awards: 42**

**Classification: EX 9 VG 269**

**Star Brood Cows: 14**

**STP: 2**

**Years in the industry: 50 years**

**Generation: 3rd generation**

**Cow families: Felicity, Maggie, Madeline, Princess and Whynot**

**Favourite bulls: Dashawn, Fix and Impression and really liking Lustre daughters heifers**

**Important breeding traits: Larger cows with good udders**

**First Excellent cow: Brampton Park WB Maggie EX-3E STP 6\***

Then there is the Miss branch of the family which includes another two Excellent cows in Brampton Park S.D Miss EX-2E 2\* and her granddaughter Brampton Park CJ Miss EX-90-2E.

Another important family for the Mountford’s has been the Whynots – which descend from Andes Apple Whynot 3<sup>rd</sup> 2\*, who was purchased at the Andeswood dispersal in Victoria in 1984.

Progeny of note from this family include

Brampton Park H.W Winette-ET VG86 3\*, Brampton Park BK Winette VG85 5\* and Brampton Park BCS Winifred VG87. Another branch of the Whynot family has seen the development of Brampton Park GP Winnipeg EX-90-1E, who classified Excellent on her third calf last year.

Descending from Brampton Park T.L Primula VG86 STP 4\* LIFE2 is Brampton Park DS Pansy EX-91-2E 1\* 1xEP 2xM 2xP whose daughters include Brampton Park OP Pansy VG (2yr).

The double Master Breeder Award came as a surprise for the Mountfords, who only achieved their first Master Breeder Award in 2021.

“We are very pleased to have achieved this award – especially with the first being so close,” Brad said.

“It has been a real team effort to achieve what we have and it was made extra special to be able to receive the award in person at the Awards Dinner in Bunbury.” Brampton Park has seen steady growth in numbers and production averages and will continue to work on these areas in the future.

“Our aim is to try and grow the herd and gradually increase numbers while continuing to develop key cow families,” he said.



Master Breeder Brad Mountford, of Rosabrook WA, says.



## The many Excellent branches of the Betty family tree

BY JON HOLLAND

It was raining Excellents at Kaloola Holsteins when the Holstein classifier visited the farm of Tony and Leesa Northfield in October 2023.

The Northfields added 13 new Excellent cows to their classification tally, with another four cows receiving a multiple EX score.

Among the Excellents were 10 members originating from the same maternal bloodline, including the 5-year-old, Kaloola Awesome Christmas EX-91-1E, who became a sixth successive generation of Excellent from the Northfield's mighty Betty family.

### Kaloola Holsteins

The Northfield family milk 120 Holsteins on their 106 hectare property at Tatham, 20 km south-west of Lismore in the Northern Rivers region of NSW. Tony and Leesa have managed the business for nearly 20 years after taking over from Tony's parents Ken and Muriel in 2005.

Their three daughters, Anna-Lee (18), Katelyn (16) and Danielle (14) enjoy helping on the farm when they are not at school, and preparing cows for their local shows.

Showing is something Tony enjoys sharing with his family. It was an interest he developed from a young age, and was the motivation for his parents in establishing their Kaloola Holsteins stud.

"My parents bought our first Holstein in 1980 as a calf for me to show as a Rural Youth Calf," Tony said.

The Rural Youth program was established in NSW as an organisation to support young people from regional communities.

"It was a club for kids on the land," Tony explained. "It was for kids from all backgrounds and industries including beef, dairy, pigs and horticulture."

"It's what got me interested in showing – and now we all do it together. If we have a bit of luck on the day then that's good."



Master Breeders the Northfield family, Kaloola Holsteins: Anna-Lee, Danielle, Leesa, Tony and Katelyn Northfield.

The Northfield's farm sits along the banks of the Richmond River, with travelling irrigators used to grow millet and kikuyu over the summer months and annual ryegrass pastures through the winter and spring, with vetch hay bought-in to fill the feed gaps.

The herd receives 2 tonnes of concentrates per cow per year, producing 950,000 litres of milk at a 7,500 litre herd average.

In 2006, the Northfields and their Kaloola Holsteins achieved Master Breeder status.

Tony said classification has been an integral part of his operation since the Holstein herd was established in 1981.

He uses it to monitor the success of his breeding program, and to build the pedigrees behind his maternal bloodlines.

"I want cows that are dairy and have good udders," Tony said. "My objective is to breed VG cows, with the best ones going on to score Excellent."

"It adds depth to the pedigree, but also shows they are still sound, and calving enough times to go Excellent."

At six successive generations of Excellents,

the Northfield's Betty family is now hot on the heels of Australia's leading Excellent cow families, including the Satins and the Shimmers on seven generations, and the reigning Australian record holders, the Meg family of Bevandale Holsteins on eight.

### The covergirl

The Bettys first arrived at Kaloola Holsteins in March 1983 when Tony's parents Ken and Muriel bought the cover page cow, Glendawn Marquis Betty EX-1E 16\* at the Glendawn Dispersal sale of Reon George.

At the time, the Northfield's were milking a predominantly jersey herd, but were gradually increasing the influence of the Holsteins as their higher milk yields were better suited for their factory quotas.

Tony said their transition to black and white began by attending a number of recognised breeder sales, and buying the cheapest animals in the ring.

Luckily, he said, they took a different approach at the Glendawn Sale after listening to some advice from fellow breeders.

# Australian Holstein Cow Family

"We were told, if we were going to go and buy one – then buy the one on the cover," Tony said. "So we did."

Marquis Betty made top price at the sale, arriving at the Northfields farm as a heavily pregnant 6-year-old. She calved just a few weeks later, with a bull calf by Romandale Re-Count. Her last calf was born in July 1991 when she was 17 years old.

In total, Marquis Betty calved 11 times, producing a lifetime total of 49,507 litres from eight herd recorded lactations, with a top lactation of 7,772 litres and a PI 122.

She classified Excellent as a 12-year-old in August 1988, with an EX-93 mammary and EX-92 for dairy strength.

Marquis Betty was a daughter of Glendawn Kriss Betty VG87, stemming from a deep Australian cow family tracing more than 20 generations to the Rosey family of David Mitchell from Lilydale in southern Victoria.

Coincidentally, it is the same maternal bloodline as the Cutie family (featured in the *Australian Holstein Journal* Summer 2023). Their common ancestor, Polygon Springfield Speckles, was born in September 1930 to breeder W.J. Tinning, Polygon Holsteins, Kyabram, Victoria, and owned by A.R. Davis, Kyvalley Holsteins, Tongala, Victoria.

The two branches have been separated by nearly a century of breeding, yet Tony said he can still see a family resemblance through the body and udder.

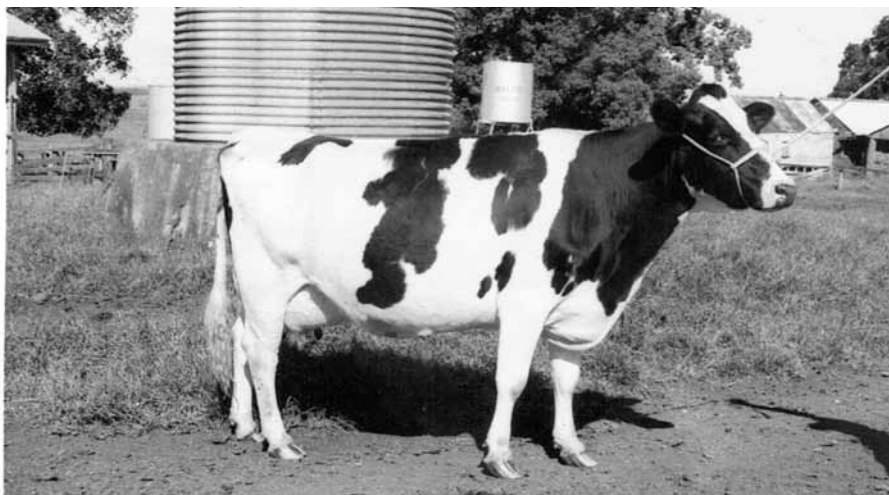
Even more remarkable was the response of both branches when crossed to the Canadian Superior Sire, Hanoverhill Starbuck.

When Master Breeder Jim Gilmore (Ingoldale) flushed Ingolston Carnation VG85 16\*, the foundation of the Cuties, to Starbuck, the combination of Marquis Betty with Starbuck was also a game changer at Kaloola.

It was the first time the Northfields had flushed a cow, and it was an outstanding result, producing 18 viable embryos, 11 pregnancies and six heifer calves.

The flush produced two Excellent daughters, along with two VG89, a VG87 and a VG85. All six achieved Star Brood Cow status, with five also awarded Superior Total Performance.

In total, the six Starbuck daughters produced a staggering lifetime record of more than 400,000 litres, with an average lifetime performance of 10 lactations.



The foundation – Glendawn Marquis Betty EX-1E 16\*

The top performer, with a lifetime record of 83,369 litres, peaking at 10,639 litres and 677 kg milk solids, PI 162, was Kaloola Starbuck Liz-ET EX-3E STP 6\* 2xM Life1.

In 1990, as a 4-year-old, Liz was crowned Champion Cow at the Lismore Feature Show under judge Colin Daley, Ourway Holsteins. She was Reserve Champion at the Dorrigo Feature Show that same year, along with champion titles at local shows including Casino, Kyogle, Alstonville and Bangalow.

"Liz was a little deeper in the body than the other Starbucks, and she had a good, well attached udder," Tony said.

In 1993, Liz was the lead cow in the Northfield's breeder pen of 3, alongside her ET sister Kaloola Starbuck Betty-ET EX-4E STP 11\* and herdmate Kaloola Starbuck Floss VG89-TW 1\*. The Starbucks were unbeatable that year, winning the Supreme Pen of 3 at Lismore, Casino, Murwillumbah and Bangalow.

## Standing the test of time

Kaloola Brady Liz EX-90-1E is a descendant of Starbuck Liz, and a fifth generation Excellent. The 8-year-old daughter of Kaloola Finalcut Liz EX-90-1E 3\* was among the latest group of new Excellents and was named Champion Mature Cow in the 2023 Queensland On Farm Challenge State final by judge Daniel Holmes (Arabella).

In his comments, Daniel said Brady Liz was a great example of an opened framed and balanced mature cow that had stood the test of time.

He praised her overall youthfulness and cleanliness, and was in awe of her udder attachments, giving her maximum points for the height of her mammary system.

"The mature cow was in magnificent form," Daniel said on the presentation video. "She was so clean, she was so dairy. This cow was 8-year-old and had six calves – yet was carrying her udder right up in her body."



Kaloola Holsteins, Lismore Dairy Spectacular 1993 Supreme Pen of 3: Kaloola Starbuck Floss-TW VG89 1\* (not a Betty), Kaloola Starbuck Betty-ET EX-4E STP 11\* and Kaloola Starbuck Liz-ET EX-3E STP 6\* 2xM Life1.



# Australian Holstein Cow Family



Supreme Champion Cow, Kyogle Show 1992 – Kaloola Starbuck Betty-ET EX-4E 11\* with John Clark (Interbreed Judge, Sunny Valley Guernseys), Ken Northfield, Kaloola Holsteins, and trophy sponsor Mr Smith.

The 4<sup>th</sup> dam of Brady Liz, Kaloola Marbuck Liz EX-91-3E 3\*, was the only Excellent daughter in Australia by the Starbuck son Mr Marbuck.

Tony admitted using a bull with such an old pedigree was an unusual mating at the time, but he liked Marbuck's dam, Miss Mark Maui EX-4E, and he knew Starbuck blood worked well over the Betty bloodline.

"We pick bulls we think will work well over our cows," he said. "We prefer bulls that leave a consistent line, and then correctively mate them to make the best cross."

Tony said the bulls from Comestar Holsteins in Canada worked particularly well over his Bettys.

The Comestar Lee daughter, Kaloola Richlee Liz EX-91-3E STP 1\* Life1 was a stylish framed cow scoring EX-94 for dairy strength, and a big time production cow producing 74,756 litres from nine lactations at a 4.6% fat test.

The Comestar Leader daughter, Kaloola Leader Liz 2<sup>nd</sup> EX-90-1E STP 3\* scored EX-96 for dairy strength. Tony attributed the superior capacity to her dam, Kaloola Skychief Liz VG87, and said it was a trait she passed onto her daughter, Marbuck Liz, and through the generations now to Brady Liz.

"Leader Liz had the spring of rib and the big barrel of her Skychief mother," Tony said. "But she showed a little more dairyness and quality to her udder as well." That familiar openness and capacity

was also present in her granddaughter Kaloola Goldwyn Liz EX-90-4E STP 1\*. She combined the "big barrel" of the Leader and Skychief before her, with the correct leg set and higher components of her Marbuck dam, plus the added style and cleanliness of her sire, Braedale Goldwyn.

In 2012, Goldwyn Liz was crowned Supreme Intermediate at the Lismore Dairy Spectacular, and Champion 2-year-old in the Queensland OFC State final. She milked for eight lactations with a lifetime total of more than 3,300 kg of fat at an average 5.3%.

Tony described her as a compact yet very complete cow with a good udder and nice capacity.



Queensland On Farm Challenge State final Champion Mature Cow 2023- Kaloola Brady Liz EX-90-1E.

"She wasn't overly big, and there wasn't anything overly special about her," he said modestly. "She didn't really excel in anything – but there were no real holes in her. Just a good, all round type of cow that we all like to milk."

## Australia's first EX-9E

At 11 stars, Kaloola Starbuck Betty-ET EX-4E STP 11\* remains among the Northfield's highest pointed Star Brood Cows and their first homebred cow to score Excellent.

At her prime, the Northfield family took Starbuck Betty to five or six local shows a year, often sharing the spotlight with her ET sister Starbuck Liz. The pair accumulated many championship titles across northern NSW and southern Queensland.

Starbuck Betty's eldest daughter Kaloola Astro Betty EX-2E, by Bridon Astro Jet, was her first daughter to classify Excellent.

Kaloola Jed Bunty-ET EX-92-9E STP 4\* and her three VG89 ET sisters, were among Starbuck Betty's youngest daughters.

In 2012, Jed Bunty scored 9E as a 15½ year-old, becoming Australia's first EX-9E Holstein.

According to Tony, Jed Bunty looked her best when she scored VG88 on her second lactation – the same year she was crowned Junior Supreme Champion at Lismore Show by Master Breeder judge Charlie Shearer (Wyoming).

Jed Bunty passed her superior conformation and longevity to her daughter Kaloola Terra Bunty 2<sup>nd</sup>-ET EX-91-7E STP 1\*, reaching 7E as a 13-year-old on her 10<sup>th</sup> lactation.

While Jed Bunty may hold the record as the first to reach EX-9E, it was Starbuck Betty's Conant-Acres-JY Broker daughter, Kaloola Broker Betty EX-4E, who laid the foundation behind the Northfield's longest successive Excellent branch.

Broker daughters were not typically noted as big production cows, yet Broker Betty maintained an average PI of 115 over 6 lactations with a top record as a 9-year-old of 10,509 litres.

As an 8-year-old, she produced a heifer calf by Lutz-Meadows E Mandel. The calf was born on Christmas Day – so it was decided to call the calf Kaloola Christmas Betty EX-91-5E STP 2\* LIFE 2.

Tony said Christmas Betty was an impressive individual, that reminded him a lot of the original Marquis Betty.

# Australian Holstein Cow Family

"Christmas Betty was a really good cow for us. She had a long neck, and was a very dairy cow with nice capacity," he said.

She won Supreme Champion Cow at Lismore in 2005, and with a record of more than 94,000 litres, remains the Northfield's highest ever lifetime producer.

Her daughter, Kaloola Destry Christmas EX-91-1E 1\*, is a fifth generation Excellent. Tony said she missed out on additional E's as she wasn't classified during the COVID pandemic. She produced numerous high-performing daughters, including Kaloola Doorman Christmas VG89, and the sixth generation Excellent, Kaloola Awesome Christmas EX-91-1E.

## A red and white Christmas

In November last year, Awesome Christmas placed second in the 5-year-old class of the Far North Coast sub-branch On Farm Competition.

She was beaten by another of Christmas Betty's granddaughters, Kaloola Solomon Christmas VG89, who the judge later named as the 5-year-old Queensland State Champion.

Tony said Awesome Christmas was quite typical of the Bettys, showing plenty of width and capacity and a very sound udder.

She belongs to Tony and Leesa's youngest daughter Danielle.

"The girls each had a heifer of their own, and Danielle wanted a red one," Tony said.

"Anna-Lee and Katelyn had heifers bought for them – but we thought we could breed Danielle a red one from Awesome Christmas – so she became her heifer."

Her daughter, Kaloola Unstobull A Christmas-ET-Red VG86, is fresh on her second lactation with red and white



Lismore Dairy Spectacular Supreme Champion Cow 2005 – Kaloola Christmas Betty EX-91-5E STP 2\* Life2, exhibited by Tony Northfield, Kaloola Holsteins, with sponsor Peter Graham, WFI.

daughters by Coomboona Zipit Mirand and Avant-Garde-I Latenite.

"It is 40 years since we first bought the Marquis cow, yet you can definitely see the characteristics coming through from the previous generations," Tony said.

"The family has always bred very strong, and hopefully they'll still be doing it for generations to come."

The continued success of the various branches of Bettys is something Tony and his family are incredibly proud of, with several branches now reaching 14 generations of VG/EX with 10 generations carrying the Kaloola prefix.

To date, there have been 57 maternal descendants of Marquis Betty that have surpassed the +90 Excellent benchmark with many accumulating multiple Excellent scores, alongside multiple branches now boasting Excellent scores over successive generations.

HJ

## Betty family tree

**Glendawn Marquis Betty EX-1E**

16\* 02-10-1976

(Agro Acres Marquis Ned EX)



**Kaloola Starbuck Betty-ET EX-4E**

STP 11\* 11-07-1986

(Hanoverhill Starbuck EX)



**Kaloola Broker Betty EX-4E**

26-07-1992

(A-Conant-Acres-JY Broker)



**Kaloola Christmas Betty EX-91-5E**

STP 2\* Life 2 25-12-2000

(Lutz-Meadows E Mandel VG)



**Kaloola Destry Christmas EX-90-1E**

1\* 22-04-2012

(Scientific Destry VG)



**Kaloola Awesome Christmas EX-91-1E**

17-06-2008

(Luck-E Awesome-Red)



Kaloola Awesome Christmas EX-91-1E.



Kaloola Solomon Christmas VG89.



# Holsteins sweep IDW supreme titles

**In front of a packed crowd at Tatura Park, Holsteins claimed all three Supreme Interbreed titles at International Dairy Week in January. Jon Holland reports.**

A further 3,500+ viewers around the globe followed the judging via livestream as the Holstein judge Barclay Phoenix of Phoenix Holsteins, Canada, awarded Senior Champion to the 6-year-old Holstein, Instyle Solomon Dahlia EX-91-1E, bred by Brenton and Ellie Thomas of Cooriemungle in western Victoria.

Soaking in the atmosphere, the judge thanked the event organisers for the opportunity, and encouraged more young people to “jump on board” the dairy show scene.

“Shows are not dead. Shows are alive and vibrant. There is no better business, and there are no better people,” Barclay said.

Dahlia was declared the early front-runner after Barclay placed her first and best

**Judge: Barclay Phoenix  
Phoenix Holsteins, Ontario, Canada**

udder of a very strong 6-year-old in-milk class.

He admitted Dahlia did not strike him when she first entered the ring. But as he analysed her further, he realised just how good she really was.

“When you stand this cow up – she must be balanced, because she’s a lot bigger than you think,” Barclay said. “When you talk about balance, dairyness, good udders and feet and legs – she kind of wraps it all up.”

Barclay gave Dahlia the advantage for her superior udder quality and the correctness of her feet and legs over the second placed 6-year-old, and eventual Reserve Senior Champion, Bluechip Black Rose-ET EX-93-2E.

Rose was exhibited by the partnership of Elm Banks and Struan Holsteins, and is a daughter of the 2016 All Australian and IDW Senior Champion Holstein, Windy Vale Contender Rose-ET EX-95-2E\*.

Barclay said he preferred the balance of his reserve cow’s fore to rear udder, and the slope to her rump over her 7-year-old herdmate and Honourable Mention, Elm Banks Doorman Lulu EX-95-3E, also exhibited by Chris and Mary Gleeson of Elm Banks Holsteins.

## Senior Champion a testament to Australian Holstein breeding

“These cows are a testament to your breeding program in Australia,” Barclay said of his senior line-up. “A tremendous group of cows with tremendous mammary systems that have stood the test of time. You guys should be very proud.”

Dahlia is a Walnutlawn Solomon daughter backed by four generations of Instyle breeding to the foundation cow Philro Marty Dahlia EX-90-2E.

She was among a small group of heifers Brenton and his wife Ellie brought with them after Brenton’s father Rodney dispersed his herd.

The couple left Dorrigo in northern



IDW Senior Champion Holstein lineup: Sponsor Brian Leslie DLS, judge Barclay Phoenix, Senior Champion – Instyle Solomon Dahlia EX-91-1E, led by Cameron Yarnold, Reserve – Bluechip Black Rose-ET EX-93-2E, led by David Dyment, Hnr Mention – Elm Banks Doorman Lulu EX-95-3E, led by Gabriel Letarte, Holstein Australia President Gino Pacitti.



IDW Senior Champion Holstein – Instyle Solomon Dahlia EX-91-1E, led by Cameron Yarnold, exhibited by Brenton & Ellie Thomas, Instyle Holsteins, Coorimungle, Victoria.

NSW four years ago, and moved to Coorimungle in south-west Victoria where they now milk 200 registered Holsteins with their three young children Evie, Jamie and Lewis. The move enabled them to buy their own farm, but also allowed Brenton greater opportunity to indulge in his passion for showing cows.

For Brenton, showing is about sharing time with friends and family, working as a team, talking about cows and enjoying a few beers.

“Ever since I was a kid, I dreamed of breeding great cows and competing at big shows like Dairy Week,” Brenton said. “Obviously it’s great to win – but ultimately, I just want my cows to look good and for people to see I have a nice line of cows in the shed.”

Last year Dahlia stood 6<sup>th</sup> in her class at IDW, and finished third in the 5-year-old All Australian competition.

Brenton said Dahlia was “just an everyday cow” that continued to get better with age.

She is recently fresh on her fourth lactation after producing 13,495 litres and 980kg milk solids last season, and has been rebred to sexed Blondin Direct, in the hope she will return to form for Dairy Week 2025.

“She’s got no holes really,” Brenton said.

“She has an awesome udder, really good feet and legs, a strong rump, and she’s long and dairy and sharp – she looks as good here as she does at home.”

## Results – Senior

**Senior Champion Holstein, Grand Champion Holstein & Interbreed Supreme Champion:** Instyle Solomon Dahlia, B & E Thomas, Instyle Holsteins, Coorimungle, Victoria; **Reserve Senior Champion:** Bluechip Black Rose-ET, Elm Banks Holsteins & Struan Holsteins, Koroit, Victoria; **Honourable Mention:** Elm Banks Doorman Lulu, C & M Gleeson, Elm Banks Holsteins, Koroit, Victoria. **Senior Best Udder:** Instyle Solomon Dahlia, B & E Thomas, Instyle Holsteins, Coorimungle, Victoria. **Premier Breeder:** J & C Gardiner & family, Avonlea Holsteins, Nar Nar Goon, Victoria. **Premier Exhibitor:** R & J Gordon & family, Gorbro Holsteins, Cohuna, Victoria. **Premier Sire:** Stantons Chief (Agri-Gene)

## Princess crowned world class intermediate

When the 2-year-old Eclipse Perennial C Princess VG87 was named Intermediate Champion for 2024, she joined an elite few that have successively won Junior Champion and Intermediate Champion

titles at International Dairy Week.

Princess was bred by Master Breeder Richard Hull (Eclipse) and exhibited by the Cherrylock and Mario Park partnership.

Judge Barclay described his champion as “world class” and the style of young cow he was looking for in the intermediate show.

“If I had a suitcase big enough – I’d be taking her home with me,” Barclay said. “She exemplifies what a young cow should look like. She’s got a beautiful mammary system. She’s got that show style. She has adequate width, and tremendous feet and legs.”

He gave Princess the advantage for her length of frame, strength of loin and correct slope from hip to pin over his Reserve Intermediate, the junior 3-year-old from the Master Breeder Clydevale herd of the Dee family of Cohuna, Clydevale Doc Cleavage-Imp-ET VG86.

Via her EX-95 dam, Cleavage is backed by 10 generations of Excellent to the incomparable brood cow Glenridge Citation Roxy EX-8E.

The judge said Cleavage moved a little nicer on her legs than his Honourable Mention and Intermediate Best Udder, Kelisher Tadoo Salina VG89, exhibited by the Templeton family of View Fort Holsteins, Tarwin.

Brad Gavenlock of Cherrylock Holsteins said his Princess boasts many of the attributes that has made her bloodline highly sought after worldwide.

Her pedigree features a double cross of the famous cow family, with her sire Eclipse Perennial, and dam Eclipse Crush A1 Princess-ET EX-90-2E both descendants of the Holstein Australia Cow of the Year finalist, Eclipse Damion G Princess-IMP-ET EX-90-2E 10\* 1xM 1xF 1xP.

“Cow families are king, so we really shouldn’t be surprised by the Princesses when they keep finishing at the top,” Brad said.

Following her Junior Champion’s title in January last year, Princess was also crowned Intermediate Champion at Sydney Royal in April, and in September, named All Australian Junior 2-year-old in-milk for 2023.

When she’s not competing at the shows, Princess competes in a 1,000 cow herd. Brad says she thrives in the freestall environment thanks to her balanced frame



and ideal dairy strength.

“The key to breeding healthy cows is to avoid extremes. Princess is not extreme anywhere. She is very correct in her frame and her rump structure is close to perfect,” Brad said. “If you wanted to teach a young person, or someone new to the industry about dairy strength – she’s it.”

**Results – Intermediate**

**Intermediate Champion Holstein & Supreme Intermediate Interbreed**

**Champion:** Eclipse Perennial C Princess, Gavenlock & Polson family, Cherrylock & Mario Park Holsteins, Tallygaroopna, Victoria; **Reserve Intermediate Champion:** Clydevale Doc Cleavage-Imp-ET, Dee family, Clydevale Holsteins, Macorna, Victoria; **Honourable Mention:** Kelisher Tadoo Salina, M & N Templeton, View Fort Holsteins, Tarwin, Victoria.

**Intermediate Best Udder:** Kelisher Tadoo Salina, M & N Templeton, View Fort Holsteins, Tarwin, Victoria.



Eclipse Perennial C Princess VG87, 1<sup>st</sup> IDW Snr 2-year-old in Milk, exhibited by Brad and Jess Gavenlock, Cherrylock Holsteins & Mario Park Holsteins.



Intermediate champions lineup: Tommy Araki; judge Barclay Phoenix; Intermediate Champion, Eclipse Perennial C Princess VG87, exhibited by Cherrylock & Mario Park Holsteins; Reserve Champion, Clydevale Doc Cleavage-Imp-ET VG86, exhibited by the Dee family, Clydevale Holsteins; Honourable Mention Intermediate & Best Intermediate Udder, Kelisher Tadoo Salina VG89, exhibited by the Templeton family, View Fort Holsteins; and Scott Lord, DLS.



## Another crown for the Princess family

The Princess cow family was again at the top of the class in the dry heifer show, with the summer yearling heifer, Gorbro Hano O Princess, exhibited by Master Breeders the Gordon family of Gorbro Holsteins, named Junior Champion Holstein and Supreme Interbreed Junior Champion.

The Siemers DJ Hano daughter impressed the judge with her correct leg set and superior combination of dairyness and strength.

"This young heifer exemplifies the right combination of style and strength," Barclay said. "She has a decided advantage in the way she stands and moves on her rear legs over the Reserve Champion."

Princess placed ahead of the Reserve Hillview Park Link Me Up, exhibited by Master Breeders the McPhee family of Hillview Park Holsteins, Finley, NSW.

The Easterbrook family from Tatura in northern Victoria received Honourable Mention with their entry, Whyndell Sidekick Paradise.

Princess was bred by the Gordon family who milk 600 registered cows in their newly refurbished freestall barn in Cohuna in north-west Victoria.

Herd manager Glen Gordon said he bought her dam, Eclipse Octane Princess 2-ET VG87, as a young in-milk cow from Rohan Sprunt at the Kaarmona Holsteins 'Once in a Decade Sale' in May 2021.

"She was cheap as chips at the sale – but she's made a hell of a cow," Glen said.



Gorbro Hano O Princess, 1<sup>st</sup> IDW Summer calf, led by Kelly Bleijendaal, exhibited by the Gordon family, Gorbro Holsteins, Cohuna.

In a surprise move, just hours after Princess was named champion, the Gordons entered her in the ST Genetics Australia 'Create the Future' sale. She made an equal third top price of \$18,000, selling to the Maxmount, Semthurst Park and McDonald Park Holsteins partnership.

Glen admitted it was an opportunistic sale, but said he wanted to maintain their reputation for selling their best – and Princess was their best.

"It's not like we were hiding a 'better' sister down the back paddock," Glen said.

"And she's not a collector's item. This is a business. It costs a lot of money to show cows at Dairy Week, and she's covered our costs."

### Results – Junior

**Junior Champion Holstein & Supreme Junior Interbreed Champion:** Gorbro Hano O Princess, Gordon family, Gorbro Holsteins, Cohuna, Victoria; **Reserve Champion:** Hillview Park Link Me Up, McPhee family, Hillview Park Holsteins, Finley, NSW; **Honourable Mention:** Whyndell Sidekick Paradise, RK & JL Easterbrook, Tatura, Victoria.



Junior championship lineup: Sponsor Tommy Araki, Japan Holstein Australia President – Gino Pacitti, Glen Gordon – Gorbro Holsteins, Junior Champion – Gorbro Hano O Princess led by Kelly Bleijendaal, Reserve Junior Champion – Hillview Park Link Me Up led by Lisa McKay, Honourable Mention Junior – Whyndell Sidekick Paradise led by Jett Easterbrook, Sponsor Carl Kent, USLGE and judge Barclay Phoenix.



# Returning reserve claims R&W grand champion title

BY JON HOLLAND

It was a case of déjà vu for the International Dairy Week 2024 Red and White Holstein Show, with the Intermediate and Reserve Intermediate Champions from 2023, both returning to defend their titles.

Last year's champion, Gorbro Unstopabull Admire-Red-Imp-ET VG88 Admire was again in impressive form, claiming the 2024 Senior Champion title for the Gordon family, Gorbro Holstein.

But Admire was upstaged by her younger rival, and last year's reserve, Gorbro Unlucky Jodie-Red VG85. As the Intermediate Champion, Jodie went on to claim the Grand Champion title of the Red and White show.

Judge Nico Bons of Bons Holsteins, Holland, had difficulty separating the pair in the final championship, but admitted he could not take his eyes away from his intermediate.

"She's such a nice stylish cow," he said, giving Jodie the advantage in the final for her head carriage, the blending of her body parts and her superior feet and legs.

Jodie was exhibited by the Gorbro team for her new owners, Geoff and Christine

**Judge: Nico Bons, Bons Holsteins, Holland**

Peatling of Moonshay Park Holsteins.

The Peatlings milk 240 cows at Invergordon in northern Victoria. The couple have been showing cattle on and off at Dairy Week for many years, however this was their first IDW Champion.

They bought the 3-year-old for an equal top price of \$20,000 at the Gorbro Holsteins "Raise the Roof" sale in February last year.

Christine admitted that while they selected Jodie in the hope she may do well at a major show, she was still surprised by her Dairy Week success.

"We saw her in the red show last year and I really liked her, and I thought – well hoped – she was good enough to go one better," Christine said.

"We've won classes here before – but not a Champion. So this is pretty special."

Christine said her love for the red coloured Holstein came from her father who used to show Guernseys.

Her theory was "if I've gotta milk cows, I want to milk nice cows".

"I just like what I like," she said. "It might sound silly – but I just love them."

Jodie was pregnant at the time of the sale, producing a heifer calf for the Peatlings by Stgen Doral-Red, that Christine said already showed a lot of promise.

Excited by Jodie's development on her second lactation, Christine contacted her breeder Glen Gordon, who agreed to manage Jodie's preparation for another run at a Dairy Week crown.

"We like breeding good cows, and I think Jodie could start something good for us," Christine said. "This show has been really good, but now we have to breed something from her."

Judge Nico has followed IDW for many years via social media and live streaming, and was thrilled by the invitation to come to Australia to judge our biggest show.

"It is a very special moment for me to be here," he said. "The quality was spectacular. I was looking for cows that were balanced, had enough chest width, and that have spectacular udders. I could find many cows with these qualities"

In his comments, Nico said his Intermediate Champion was a young cow with a big future.

"She's so correct and so balanced," he said. "She is very open of her rib and a very, very good rump structure. How she moves on her feet and legs, her width of rear udder and the width all the way through the cow places her over my reserve."

Nico selected his winning senior 2-year-old, Gorbro Riverdown Asia-Red-Imp-ET VG85 for his Reserve.

Asia was yet another winning entry bred by the Gordon family. She used her extra height and width of rear udder to place over the winning junior 2-year-old Honourable Mention, Sun Vale Jordy Destini-Red GP84, exhibited by the Anderson family of Sun Vale Holsteins, Numurkah.



IDW Grand Champion Red & White Holstein – Gorbro Unlucky Jodie-RED VG85 exhibited by Geoff and Christine Peatling, Moonshay Park Holsteins, Invergordon, led by Lauren Fitsmaurice.

**Results – Intermediate**

**Red and White Holstein Intermediate Champion & Grand Champion:** Gorbro Unlucky Jodie-Red, G & C Peatling, Moonshay Park Holsteins, Invergordon, Victoria; **Reserve:** Gorbro Riverdown Asia-Imp-ET-Red, R & J Gordon & family, Gorbro Holsteins, Cohuna, Victoria; **Honourable Mention:** Sun Vale Jordy Destini-Red, Anderson family, Sun Vale Holsteins, Numurkah, Victoria.

**A lot to admire about the senior champion**

The dominance of Gorbro Holsteins continued in the Senior Red and White Holstein show with their 4-year-old Gorbro Unstopabull Admire-Red-Imp-ET VG88, claiming the 2024 Senior Champion's title. Judge Nico Bons said the senior title was a very close contest between the 4-year-old Admire and the winning 5-year-old, Lightning Ridge CMD Dback Barbara-Red-ET EX-90-2E, exhibited by the partnership of Brenton and Ellie Thomas, Instyle Holsteins, and Judson Jennings, Rusty Red Holsteins.

Nico praised Barbara for her style, her overall width, and the exceptional height and width of her rear udder – but it was not enough to place her above his champion Admire. "My champion – she's so stylish," Nico said. "She has just the right body condition. She's open of the rib, and she has a



Sponsor Australian Dairyfarmer Alastair Dowie, judge Nico Bons with the IDW Red & White Holstein Supreme Udder – Lightning Ridge CMD Dback Barbara-ET-Red EX-90-2E, exhibited by B & E Thomas, Instyle Holsteins and J Jennings, Rusty Red Holsteins.

fantastic udder. Today, it's the way she moves on her feet and legs that puts her above the second cow." For his Honourable Mention, Nico tapped the 6-year-old Windy Vale Awesome Ashlyn-Red VG88, exhibited by the Anderson family of Sun Vale Holsteins, Numurkah. The best is yet to come for the red and white champion according to Admire's breeder Glen Gordon.

He said Admire thrived in the show shed environment at IDW, averaging a whopping 65 litres per day as the leading production cow of his show string. Glen owns a part share in her North American dam, Luck-E Diamondadmire-ET-Red EX-95 who is a direct daughter of the acclaimed brood cow Luck-E Advent Asia-ET-Red EX-94. The investment has given Glen the opportunity to import embryos from the



Senior Champion lineup: Glen Gordon, Gorbro Holsteins, judge Nico Bons, IDW Senior Champion Red & White Holstein – Gorbro Unstopabull Admire-Imp-ET-Red VG88 exhibited by the Gordon family, Gorbro Holsteins, Cohuna; Reserve – Lightning Ridge CMD Dback Barbara-Red-ET EX-90-2E, exhibited by B & E Thomas, Instyle Holsteins and J Jennings, Rusty Red Holsteins; Honourable Mention – Windy Vale Awesome Ashlyn-Red VG88, exhibited by the Anderson family, Sun Vale Holsteins, Numurkah, sponsor DLS Brian Leslie.





1<sup>st</sup> placed IDW Red & White Progeny Pair – Gorbro Unstopabull Admire-Imp-ET-Red VG88 and Gorbro Riverdown Asia-Imp-ET-Red VG85, exhibited by the Gordon family, Gorbro Holsteins, Cohuna.

famous bloodline, resulting in Admire and her full ET sister the Reserve Intermediate, Riverdown Asia.

While he always held high expectations for the progeny pair, Glen admitted their repeated Dairy Week success seemed a far-fetched dream.

### Results – Senior

**Red and White Holstein Senior Champion:** Gorbro Unstopabull Admire-Imp-ET-Red, R & J Gordon & family, Gorbro Holsteins, Cohuna, Victoria; **Reserve:** Lightning Ridge CMD Dback Barbara-ET-Red, B & E Thomas, Instyle Holsteins, J Jennings, Rusty Red Holsteins, Victoria; **Honourable Mention:** Windy Vale Awesome Ashlyn-Red, G & M Anderson & family, Sun Vale Holsteins, Numurkah, Victoria.

### Tim Tam a champion from any direction

Investments in red and white Holsteins have continued to pay off for Gippsland dairy farmers Rod and Steph Goode, with their most recent purchase, Cherrylock Tequila Tim Tam-Imp-ET-Red, named



IDW Senior Champion Red & White Holstein – Gorbro Unstopabull Admire-Imp-ET-Red VG88 led by Kelly Bleijendall, exhibited by the Gordon family, Gorbro Holsteins, Cohuna.

Junior Champion of the IDW Red and White Holstein Show.

The 7-month-old heifer impressed the judge with her maturity and balance.

“My champion is a balanced kind of heifer – and with so much quality,” Nico said in his comments. “Every way you look at her, from the front, from the rear, from the side – she always shows you the right profile.”

Nico gave Tim Tam the advantage for her strength of topline and correctness of rump over the Reserve, Lightning Ridge Analyst Siren-ET-Red, exhibited by the Patten, Borba and TR Investments partnership.

In naming Siren as his Reserve, Nico praised her length of neck and said it was her superior angularity and spring of rib that placed her over his Honourable Mention, Avalon Mandate Drama-Red, exhibited by the Modra family, Avalon Holsteins, Gunbower.

It has been a rapid rise to the top for the Goode family and their Boronia Glen Holsteins.

The couple, who milk 350 cows at Poowong North, only recently started registering their cows as a way of building value in their assets.

Steph hopes she can fast-track their herd’s development by investing in elite animals and using IVF and ET technologies to expand their influence on their herd.

Tim Tam is a granddaughter of the 9-time Red and White All-American nominated Holstein, Jen-D Devil Tiffany-Red EX95-3E.

Steph was quite keen on the cow family, so when she was the losing bidder on a pick-of-4 ET sisters at Cherrylock “Party in the Park” sale in March 2023, she approached Brad and Jess Gavenlock and bought Tim Tam in a private sale.

At this stage, Steph said showing cows was just an interest, but hopes it would potentially add further value to their assets and increase awareness of their stud and their breeding program.

She said her next outing would be her local Korumburra Show in February, where she plans to prepare and lead a heifer on her own for the first time.

“I have been very lucky to have good people like Jess and Brad to learn off,” Steph said. “They are always more than happy to divulge and share what they know, as well as lots of other people down our way that have offered to help.”



IDW Red & White Holstein Junior Champion- Cherrylock Tequila Tim Tam-Imp-ET-Red led by Imogen Kath, exhibited by Steph Goode, Baronia Glen Holsteins.

# Verified Holsteins



## Holstein Australia's online sales platform

Verified Holsteins is the easiest way to sell quality Holstein cows and bulls.  
List your available stock online to maximise your returns in an efficient, cost-effective  
and secure way, saving you time and money.

### How to sell Holsteins

Want your animals for sale to reach the widest possible audience without stepping outside your farm gate? Holstein Australia members just enter your membership number, details of animals for sale and listing duration on our seller form and send it to us. We'll do the rest.

### What animals can I sell?

To ensure that Verified Holsteins offers only the highest quality female and male Holsteins, all animals listed must be either:

- Registered Holsteins, or
- Currently unregistered but eligible for registration.

For genomically tested animals that meet the above criteria, purchasers will be able to view and search for animals based on BPI, ABVs and specific traits.

Verified Holsteins saves you time and money, showcasing the quality Holsteins you want to sell to dairy farmers and breeders nationwide 24/7.

### Buying animals

Verified Holsteins Online is the quickest and easiest way to find quality female and male Holsteins to help you achieve your breeding goals.

With no signup fees or hidden costs, buy registered and genomically tested Holstein cattle anytime, anywhere from your computer, tablet or smartphone, direct from the vendor or their authorised agent.

Visit Verified Holsteins Online or contact Adam Sawell on 0401 096 507 to find out more.

[www.verifiedholsteins.online](http://www.verifiedholsteins.online)





# IDW Sheri Martin Youth Showmanship

BY JON HOLLAND

It was the thrill of the competition, and the opportunity to put her skills to the test that drove enthusiastic youth competitor Scarlett Bawden's love of showing dairy cattle.

The 13-year-old from Willow Grove in west Gippsland is a fourth generation show person. She has been competing in dairy parading competitions since she was 4-years-old, after learning all about showing cows from her father Glen.

"My dad has been showing cows for most of his life," Scarlett said. "It is a family interest and something we like doing together."

The Year 8 student from Trafalgar High School finished second in the primary section of the Sheri Martin Youth Showmanship class at International Dairy Week in January.

The event featured close to 100 participants spread across four age categories.

The Tatura Park arena was at full capacity during the hotly contested primary section.



IDW Sheri Martin Youth Showmanship – Primary section. 2<sup>nd</sup> place – Scarlett Bawden, Majestic Holsteins, Willow Grove, with Majestic Maestro Dove and judge Jessica Gavenlock, Cherrylock Cattle Co.

**Judge: Jessica Gavenlock,  
Cherrylock Cattle Co.,  
Tallygaroopna, Victoria**

Yet Scarlett managed to keep her cool, saying she drew from her past experiences at her local shows.

"At the start I was a little nervous, but once I was in the ring, I focussed on the judge and presenting my heifer as best I could," she said.

Judging the showmanship class was Jessica Gavenlock of Cherrylock Holsteins.

The renowned cattle fitter congratulated Scarlett for the way she set her heifer and her control around the ring, saying it was exactly what she looked for when she needed someone to parade a heifer at a show.

Scarlett won her opportunity to come to Dairy Week after receiving the encouragement award at the North Vic Allbreeds Heifer Classic in Kyabram in November.

The prize was a free entry to Dairy Week, which Scarlett used to enter her yearling heifer Majestic Maestro Dove in the Youth Show, where she finished fifth in their class.

She enjoys spending time with her heifers at home and selecting which one to take to the shows. Scarlett said she decided on Dove because she was the heifer with the most dairy quality and the most style.

"She was quiet, and she was the right-sized heifer for me to lead," Scarlett says, "but she also loves the attention."

When she's not at the dairy shows, Scarlett can also be found competing in equestrian eventing and showjumping.

She was also a member of the Gippsland Dairy Youth team for the Holstein Australia Youth Challenge Trials.

Scarlett said her friends at home did not have cows and do not understand what she does at the shows – so Dairy Week was a great opportunity for her to catch up with friends who shared her interest.

"It's great to come to dairy week and see so many young people having a go," she said. "It's important that young people have opportunities to learn and improve their skills in presenting their cows well."

But most importantly for Scarlett, showing is about spending time training her heifer, and the excitement of parading her heifer in the ring.

## Results: Youth Showmanship

### Senior Handler:

1. Angus Fraser
2. Zoe Botha
3. Iszi Crawford
4. Tom McKnight
5. Tammy Stone

### Intermediate Handler:

1. Becky Hines
2. Alexis Allen
3. Stacey Gleeson
4. Chelsea Atkins
5. Astre Modra

### Primary Handler:

1. Indiana Cole
2. Scarlett Bawden
3. Maci Crothers
4. Chloe Gleeson
5. Evie Cerullo

### Junior Handler:

1. Piper McDonald
2. Sophia Patterson
3. Max Fisher
4. Jaxon Collins
5. Layla Yarrington



Sheri Martin Youth Showmanship competitor Scarlett Bawden with her heifer, Majestic Maestro Dove.

# Confidence and consistency win through for Western District youth

BY JON HOLLAND

**S**trong leadership, teamwork and confidence across all disciplines gave the Cobden AB team from the Western Districts the advantage over the opposing 12 teams in the Holstein Australia Youth Challenge Trials at International Dairy Week in January.

The challenge attracted 130 competitors representing all states and all breeds. It has become a premier feature at IDW, with some families travelling more than 10 hours to compete in the team event.

The overjudges for this year's event included Daniel Bacon, Victoria, (clipping), Olivia Millhouse, Tasmania, (parading) and Courtney Afford, SA, (judging).

The team from North West Victoria started strongly with an early lead after the clipping scores were tallied. The South Australian team made up some ground with a skilled performance in the parading, and the Australian Ayrshire team received top marks for their confident finish in the junior judging category.

In the end, the Western Districts Cobden AB team was the most consistent performer across all three disciplines, finishing the challenge with the highest score overall.

In second place was the Eagle Direct team from Northern Victoria, followed closely by the South Australian team in third.

This was Western Districts team leader Anna Dickson's 10<sup>th</sup> year competing in the Youth Challenge. The 17-year-old said the event was one of the highlights of her week.

"It's great being able to do something you enjoy, and to do it as part of a team," she said. "We all know each other and I think we all work well together as a team."

This year Anna took a senior role within the group, which she said was a great learning experience for her and her fellow team leaders Toby Flemming and Abbie Hanks.

"We were used to having older kids there to look up to for help – but now we're the older ones, so it was on us to pick up that responsibility."

## Holstein youth

Anna said when they selected their Cobden AB team they nominated a senior person as a leader and mentor for each discipline, with Toby heading the clipping team and Abbie the parading.

Anna lead the judging team and took on the role of speaking over the microphone. She said it was a little intimidating – but she was confident she was up to the task.

"I think it's important to stay positive with your comments when you are judging, and back up what you say," she said. "Everyone's just out there doing their best."

As a former youth competitor herself, and now a National Judges Panel member, overjudge Courtney Afford understands the pressure.

She said she benefited enormously from the confidence she gained as a teenager participating in the Youth Challenge.

"The Youth Challenge is a great learning experience," she said. "It builds skills and

confidence and is a great opportunity for younger people to develop in themselves."

"Judging can often be heavily criticised, but as long as you trust your judgement and justify yourself with your comments, you should be really happy with yourself."

Courtney said the maturity of this year's competitors was a real highlight.

"They looked really comfortable out there speaking, and were so confident and cruisy. Some of them you'd think did it as a day job."

She said even the younger and less-experienced competitors were able to get a lot of the placings correct, and were using terminology and phrasing in their comments well beyond their years.

Tasmania's Olivia Millhouse was responsible for overjudging the parading section.

After observing each group of three for their overall presentation, teamwork, technique and uniformity, Olivia said there was very little between the winning teams.

She said the stand-out teams were those that benefited from strong leadership and communicated well as a team when a heifer was being difficult, or



Holstein Australia Youth Challenge Trials 1<sup>st</sup> place – Western Districts Cobden AB. Back row: Toby Fleming, Joe Chant, Layl Shelley, Abbie Hanks, Stacey Gleeson. Front row: Matilda Rundle, Anna Dickson, Olivia Gallagher, Caitlyn Rundle, Shae Tweddle. Photograph: Cowsmopolitan, Inc



when a younger member was feeling overwhelmed.

“There were some individuals that took on leadership roles within their group which was really impressive,” Olivia said. “They took charge of any situation and stayed calm and were really encouraging.

“At this age, many of the kids wouldn’t even recognise the important skills they are developing,” she said. “But they are important skills they will need in the future – hopefully as future leaders themselves in the dairy industry.”

**Results: Youth Challenge**

- 1<sup>st</sup> – Western Victoria Cobden AB
- 2<sup>nd</sup> – Northern Victoria, Eagle Direct
- 3<sup>rd</sup> – South Australia

**Individual awards:**

Clipping: 1<sup>st</sup>: Scott Moran, Northern Vic, Eagle Direct; Encouragement: Jackie Taylor, North West Vic, Genesis ET

Parading: 1<sup>st</sup>: Evie Cerullo, Kiannah Bartholomew, Lucy Newman, South Australia

Judging: 1<sup>st</sup>: Macs Rubain, Australian Ayrshires



Holstein Australia Youth Challenge Trials – 2<sup>nd</sup> place – Northern Victoria Eagle Direct. Back row: Sarah Lloyd, Claudia Ross, Charlie McMullin, Jake Beggs, Thomas Gordon, Tyler Gordon. Front: Seb Lemma, Sienna Ross, Scott Moran, Emily Gordon. Photograph: Cowsmopolitan, Inc



Holstein Australia Youth Challenge Trials – 3<sup>rd</sup> place – South Australia. Back row: Katie Bell, Toby Zilm, Will Philpott, Chris Thompson, Spencer Eckert, Evie Cerullo. Front row: Lochie Philips, Lucy Newman, Cooper Philips, Kiannah Bartholomew, Chelsea Schutz, Tess Newman. Photograph: Cowsmopolitan, Inc



Clipping encouragement award. Judge Daniel Bacon with Jackie Taylor – North West Victoria, Scott Moran – Northern Victoria Eagle Direct. Photograph: Cowsmopolitan, Inc



Judging encouragement award: Judge Courtney Afford, Macs Rubain, Australian Ayrshires. Photograph: Cowsmopolitan, Inc



Parading encouragement award: Judge Olivia Millhouse, with South Australia team members Evie Cerullo, Kiannah Bartholomew, Lucy Newman. Photograph: Cowsmopolitan, Inc



# AUSTRALIA'S BEST HOLSTEINS

## A2P2 PP LUSTER X DUKE



Daughter Proven

No Horns Policy

#1 BPI PP sire over 110 Overall Type

CONV **\$30<sup>00</sup>**  
SEXED **\$65<sup>00</sup>**

## TIRANO P JERONIMO X MAIN EVENT



Daughter Proven

Top 1% Sustainability Index

Top 1% BPI, HWI and SI

RRP **\$28<sup>00</sup>**

## POLLGARTH P BANJO X BRINX



NEW release sire

Health Trait Specialist sire

104 Heat Tolerance sire

RRP **\$20<sup>00</sup>**

## LASTIN FEDORA X JETT



Daughter Proven

High Production sire

Type & Udder improver

RRP **\$24<sup>00</sup>**

## CANDYMAN ADZOOK X FORTNITE



Calving Ease Specialist

Short Gestation Length Sire

Top 1% BPI, HWI and SI

RRP **\$25<sup>00</sup>**

## TINAMBA VARLEY X LETSGO



Total performance sire!!

Top 1% Sustainability Index

\$520 BPI, 274 ASI, Overall Type 109

RRP **\$26<sup>00</sup>**

## VITTORIA PP RED CFP X MISSION

Ultra plus



No Horns Policy

#1 PP RED Holstein BPI

Red bull with Production

RRP SEXED **\$55<sup>00</sup>**

## GONE PP ALLDAY X BASIC

Ultra plus



No Horns Policy

Type & Udder Specialist

Out-Cross POLLED Pedigree

RRP SEXED **\$70<sup>00</sup>**

## PILBARA PERSEUS X POWERBALL

Ultra plus



Reliable Caving Ease Sire

Top 1% BPI, HWI and SI

#1 Sustainability Index Sire

RRP SEXED **\$55<sup>00</sup>**

The RRP prices listed are exclusive of GST. Individual offers available with current stock, pricing is subject to change at the release of the April 2024 ABVs



# Call for women to care for their health

**A** call for women in the dairy industry to put their own health first was the theme of the Power of Women in Dairying annual dinner at International Dairy Week 2024.

Each year, the Power of Women community comes together, but this year's event had a distinctly different feel. In memory of industry stalwart Sheri Martin, who passed away due to ovarian cancer, this year's keynote speaker was Georgie Herbert, Donor and Partnerships Director of Ovarian Cancer Research Foundation (OCRF).

Georgie raises vital funds to develop a detection test for ovarian cancer. Currently, 70% of women are diagnosed in advanced stages; meaning less than a third of them are expected to survive beyond five years.

She has a personal connection to this insidious disease; having lost her Mum, Mands Herbert, to ovarian cancer in 2017 after an 11-year fight.

Georgie's key message to women in the dairy industry was to stop putting the cows and farm ahead of their own health. As a dairy farmer calls in the vet if a cow is ill or seems 'off', she encouraged women to head to the doctor if something doesn't seem right.

"The symptoms of ovarian cancer are so vague – for many women, the only signs are cramps, bloating, feeling full or needing to urinate more often – all symptoms which mimic common female complaints," she said.

"It is imperative for women to advocate for their own health – if something doesn't seem right, persist until you have an answer."

More information about ovarian cancer can be found on the Ovarian Cancer Research Foundation website.



Power of Women dinner MC, Casey Treloar, interviewing Georgie Herbert from the Ovarian Cancer Research Foundation.

## Holstein Australia

Holstein Australia is a long-term supporter of the Power of Women in Dairying movement, which sponsors women to attend the World Dairy Expo in Madison, Wisconsin.

So far, Clare Modra (Avalon), Penny Welch (Autumn) and Emmalea Wishart (Rowlands Park) have been the three successful recipients of this highly prized scholarship.

The Power of Women in Dairy Bette Hall Award also acknowledges trail blazers in the industry, with four Holstein breeders having been recipients since its inception in 2016: Leanne Dobson (Fairvale), Jenny Grey (The Pines), Pam Malcolm (Paringa) and Mandy Pacitti (Misty Brae).

Holstein Australia congratulates Winsome Anderson, who become the 8<sup>th</sup> woman to be awarded the Bette Hall Award in recognition of her outstanding contribution to the Jersey breed.



RIGHT: 2024 Bette Hall Award winner Winsome Anderson with previous recipients Lyn Boyd, Lisa Broad, Pam Malcolm and Mandy Pacitti.





TOP LEFT Judson Jennings makes the final touches before hitting the ring.

TOP RIGHT: Bev and Gary Carpenter (Garerley) and Ross Soares (Calderbrae) enjoy a catch up.

ABOVE LEFT: Lee Hamilton and Abbie Hanks with Lot 19 in the St Genetics 'Create the Future' sale – Ashen Plains Lambda Lilly.

ABOVE RIGHT: Holstein Australia President Gino Pacitti oversees the Cows Create Careers final.

LEFT: Adam, Colin and Mark Dee of Clydevale Holsteins were recognised for their 2023 Cow of the Year – Clydevale MrSam Pisa EX-91-3E.

BELOW LEFT: Glen Gordon and Andrew Cullen with Westmuir Chief Pearl (Gorbro, Westmuir & Cullen) – 1st place and Best Udder in 4-year-old In-Milk class.

BELOW RIGHT: Emmalea Wishart (Rowlands Park) prepares to enter the ring with Rowlands Park Chief Cinnamon.

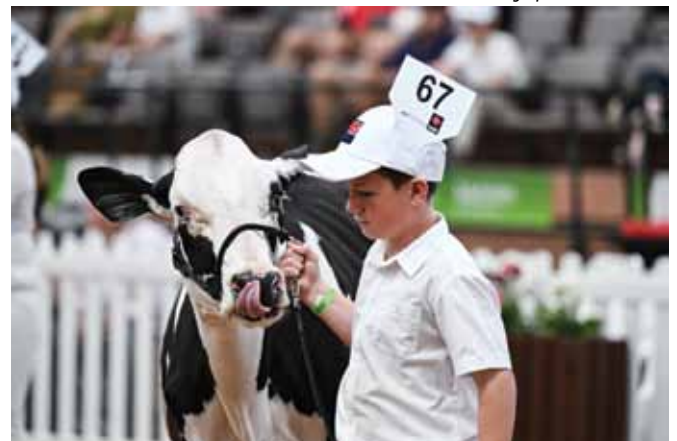






## Caught in the act at IDW

*Photographs: Fiona Hanks*









# Classification Tour results

## 11/11/2023 to 05/03/2024

### Central & Western NSW

#### D D CHESWORTH

EX-91-3E	Tomargo Goldsbrax Gina	5 Lact.
EX-90-1E	Tomargo Aftershock Adeen	4 Lact.
EX-90-1E	Tomargo Farnear Gina	5 Lact.
EX-90-1E	Tomargo Solomon Gina	5 Lact.
VG85	Tomargo Crushabulls Gina	1L 2.10Y

#### S D & E G CHESWORTH

EX-92-1E	Tomargo Recluse Fever Apricot	5 Lact.
EX-91-3E	Tomargo Recluse Bradnick Audacity	5 Lact.
EX-91-2E	Tomargo Recluse Balti Starbaby	5 Lact.
EX-91-2E	Tomargo Recluse Gold Starbaby	6 Lact.
EX-90-1E	Arabella 1st Bev	3 Lact.
EX-90-1E	Tomargo Recluse Avalon Ally	5 Lact.
EX-90-1E	Tomargo Recluse Bradnic Anthem	5 Lact.
EX-90-1E	Tomargo Recluse Braxt Tilly	6 Lact.
EX-90-1E	Tomargo Recluse Ceo Katie	5 Lact.
EX-90-1E	Tomargo Recluse Fashion Paula	5 Lact.
EX-90-1E	Tomargo Recluse Fever Hope	5 Lact.
EX-90-1E	Tomargo Recluse Glauco Reckless	5 Lact.
EX-90-1E	Tomargo Recluse Goldsn Alison	6 Lact.
EX-90-1E	Tomargo Recluse Million Ingrid	6 Lact.
EX-90-1E	Tomargo Recluse Regi Katie	5 Lact.
EX-90-1E	Tomargo Recluse Solomon Crisp	5 Lact.
EX-90-1E	Tomargo Recluse Stanley Crisp	5 Lact.
EX-90-4E	Tomargo Recluse Bradnick Dee	6 Lact.
EX-90-3E	Instyle Doorman Turnell	5 Lact.
EX-90-3E	Tomargo Recluse Farnear Starbaby	5 Lact.
EX-90-3E	Tomargo Recluse Windbrook Tina	6 Lact.
EX-90-2E	Tomargo Recluse Bankroll Karla	5 Lact.
EX-90-2E	Tomargo Recluse Bradnick Jean	6 Lact.
EX-90-2E	Tomargo Recluse Circuit Katie	5 Lact.
EX-90-2E	Tomargo Recluse Jim Quality	4 Lact.
EX-90-2E	Tomargo Recluse Solom Tilly	5 Lact.
VG86	Tomargo Recluse Diamond Mavis	1L 2.7Y
VG86	Tomargo Recluse Sidekick Vegemite	1L 2.7Y
VG85	Tomargo Recluse Diamond Brema	1L 2.6Y
VG85	Tomargo Recluse Diamond Klaske	1L 2.6Y
VG85	Tomargo Recluse Sidekick Sue	1L 2.10Y

#### GREGORY MOORE

EX-90-1E	Tomargo Recluse Chiefs Joan	3 Lact.
----------	-----------------------------	---------

### Manning NSW

#### KILLARRA PARK

EX-91-4E	Killarra Park Aftershock Fussy	8 Lact.
----------	--------------------------------	---------

#### CAMERON YARNOLD

EX-94-4E	Arrallik Atwood Candy 2-ET	7 Lact.
EX-92-3E	Oxley Vale Erb Piebe	7 Lact.
VG85	Arrallik Alongside Piebe	1L 2.3Y

### South Coast & Tablelands NSW

#### A R CRAWFORD

VG85	Mayfair Arrow Shimmer-CNF-DPF-BLF	1L 2.8Y
------	-----------------------------------	---------

#### JIM STRONG

VG87	Strongbark Tattwo Tiffany 2nd-ET-CNF-DPF-BLF	1L 3.0Y
------	--	---------

#### JIM STRONG & LINSAND FARMS PTY LTD

EX-90-1E	Strongbark Ms Doorman Voltage	4 Lact.
----------	-------------------------------	---------

### South West Riverina NSW

#### LE & K L CULTON

EX-90-1E	Ellamatta Mario Ellie	4 Lact.
----------	-----------------------	---------

#### FLANAGAN FARMS

EX-90-1E	Wood Lawn Guthrie Zebra 5792	7 Lact.
EX-90-1E	Wood Lawn Maverick Elaine 6351	5 Lact.
EX-90-1E	Wood Lawn Samite Haydee 6869	4 Lact.
EX-90-1E	Wood Lawn Unix Marcia 6110	6 Lact.
VG85	Wood Lawn Dylan 8454	1L 1.11Y

VG85	Wood Lawn Lambda Christina 8194	1L 2.3Y
VG85	Wood Lawn Lenux 7716	1L 3.2Y
VG85	Wood Lawn Mirand Silk 8028-PO	1L 2.8Y
VG85	Wood Lawn Wanda 7865	1L 2.10Y

### Fleurieu & Central SA

#### ALTMANN FARMS

EX-91-1E	Blackwood Park Wickham Angel 7633	6 Lact.
EX-90-1E	Blackwood Park Crush Telstar 7738	5 Lact.
EX-90-1E	Blackwood Park Kingdoc Kara 8117	3 Lact.
EX-90-1E	Blackwood Park Mincio Pearl 7370	7 Lact.
EX-90-1E	Blackwood Park Saturn Verity 7802	5 Lact.
VG85	Blackwood Park Radio Token 8370	1L 2.9Y
VG85	Blackwood Park Revere Kara 8398	1L 2.7Y
VG85	Blackwood Park Revere Liz 8457-TWIN	1L 2.4Y

#### BRAEFORD PROP.

EX-93-2E	Braeford Hammer Emma	5 Lact.
----------	----------------------	---------

#### GLENMAX HOLSTEINS

EX-91-2E	Glenmax Linderman Cari	4 Lact.
EX-90-1E	Glenmax Aladdin Marcia-RED	4 Lact.
EX-90-3E	Glenmax Fever Sally	5 Lact.

#### GLENUNGA PROPRIETORS

EX-90-1E	Avonlea Kay-ET	3 Lact.
EX-90-1E	Glenunga Buxton Jakaya	5 Lact.
EX-90-1E	Glenunga Solomon Graceful	3 Lact.
EX-90-5E	Glenunga Beacon Saluke	8 Lact.
EX-90-2E	Glenunga Falcon Dingly	6 Lact.
EX-90-2E	Glenunga Windbrook Stephany-TWIN	5 Lact.
VG86	Glenunga Tatoo Butterthyme	1L 3.0Y
VG85	Glenunga Rubels Red Harmonica	1L 3.4Y
VG85	Glenunga Sogno Etsy	1L 2.10Y

#### L B & M A GOLDER

VG85	Golderama Kingpin 2918	1L 2.11Y
------	------------------------	----------

#### R P HERRMANN & CO

VG85	Clardale Kingdoc Stacie	1L 2.6Y
------	-------------------------	---------

#### SHERRIE & JAMES HURRELL

EX-90-1E	Merrijae Apache Molly	4 Lact.
----------	-----------------------	---------

#### P T & K M KERBER

EX-91-3E	Andante Attorney Ros-PO	7 Lact.
----------	-------------------------	---------

#### BRIDGET LIEBELT

VG85	Torlea Sidekick Lisa	1L 2.5Y
------	----------------------	---------

#### C G & F D MASON

EX-91-1E	Jervois Byway Charm	4 Lact.
EX-91-1E	Jervois Chels Courtney	3 Lact.
VG86	Jervois Radar Jamboree	1L 2.9Y

#### MISTY BRAE HOLSTEINS PTY LTD

EX-92-3E	Misty Brae Breeza Penny	7 Lact.
EX-91-3E	Misty Brae Jenkins Della	7 Lact.
EX-90-1E	Misty Brae Attitude Gretch	4 Lact.
VG86	Misty Brae Morning Cinderella-CNF-DPF-BLF	1L 2.5Y

#### H A NEWMAN & CO

EX-92-5E	Newlyn Park Regan Maid	9 Lact.
EX-90-1E	Newlyn Park Mvp Maid	5 Lact.
VG85	Newlyn Park Buffalo Posch	1L 2.10Y

#### ANDREW PACITTI

EX-91-4E	Misty Brae Yorick Della-ET	7 Lact.
EX-90-1E	Empire Destry Samantha	4 Lact.
EX-90-1E	Empire Musketeer Sam	6 Lact.
EX-90-1E	Empire Russian Pearl	4 Lact.

#### PARINGA VIEW PARK

EX-90-1E	Edge Crush Sweet	4 Lact.
----------	------------------	---------

#### D S PEGLAR

EX-90-1E	Sleepy Hollow Silver Anthea	6 Lact.
----------	-----------------------------	---------

#### PRIME SA

EX-91-1E	Billabong Delon Showgirl	6 Lact.
----------	--------------------------	---------

EX-91-3E	Primeacres Shottle Paulete	10 Lact.
EX-90-1E	Primeacres Hercules Jayda	5 Lact.
EX-90-2E	Jervois Breeza Gretchen	9 Lact.

#### ROCKWELLA FARM HOLSTEINS

EX-91-3E	Rockwella Farm Regal Jewel-CNF-DPF-BLF	7 Lact.
EX-90-1E	Rockwella Farm Balisto Belle	4 Lact.
EX-90-3E	Edge Long Shakira-CNF-DPF-BLF	7 Lact.
EX-90-2E	Edenburg Berryhill Taze	6 Lact.
EX-90-2E	Rockwella Farm Dispatch Heather 3rd	5 Lact.
VG85	Rockwella Farm Pyramid Pandora-CNF-DPF-BLF	1L 2.4Y

#### C J & K A ROYANS

EX-90-1E	Windy Vale Acme Barb-ET-BR	6 Lact.
VG85	Windy Vale Jagger Rose-ET-CNF-DPF-BLF	1L 2.2Y
VG85	Windy Vale Moment Asher	1L 2.2Y

#### R & R WALMSLEY

EX-91-2E	Robsvue Avalanche Penny	4 Lact.
VG85	Robsvue Crushabull Piper	1L 2.10Y

#### R & R WALMSLEY & C J & K A ROYANS

EX-90-2E	Coomboona Apples A Bambi-IMP-ET-RED	5 Lact.
----------	-------------------------------------	---------

#### D R & E D ZWECK

EX-90-1E	Donava Rambo Calamity	5 Lact.
----------	-----------------------	---------

### South Eastern SA

#### BENLARGO HOLSTEINS

EX-90-1E	Benlargo Archival Olivia	5 Lact.
EX-90-1E	Benlargo Jettair Margot	5 Lact.
VG87	Benlargo Alligator Ding	1L 2.6Y
VG85	Benlargo Bardo Ding	1L 2.4Y

#### D J & T A FIEBIG

EX-92-5E	Warramont Medallion Fromage-ET	9 Lact.
----------	--------------------------------	---------

### Tasmania

#### CALTHORPE FRIESIAN STUD PTY LTD

EX-92-3E	Fairvale Aj Nola 28	7 Lact.
EX-90-1E	Calthorpe Jw Lorraine	4 Lact.
VG85	Calthorpe Perseus Princess	1L 2.4Y

#### CRADLEVIEW HOLSTEINS

EX-93-5E	Cradle View Lheros Midge	9 Lact.
EX-93-2E	Cradle View Bonair Dot	10 Lact.
EX-91-1E	Cradle View Windbrook Leanne	9 Lact.
EX-91-2E	Cradle View Finalcut Edie	10 Lact.
EX-90-2E	Cradle View Baltimore Lucy 3rd	5 Lact.
VG85	Cradle View Solomon Lucy 2nd	1L 3.4Y

#### DATUMVALE HOLDINGS PTY LTD

EX-91-1E	Datumvale Absolute Favour-ET	8 Lact.
EX-90-1E	Barostin Reginald Megan 316	7 Lact.
EX-90-1E	Datumvale Goldchip Annable	7 Lact.
EX-90-4E	Datumvale Windbrook Roxy-IMP-ET	8 Lact.
EX-90-2E	Datumvale Goldsun Ding	7 Lact.
EX-90-2E	Datumvale Samuelo Royal	10 Lact.
VG86	Datumvale Sidekick Cyrus	1L 2.5Y
VG85	Datumvale Solomon Nola	1L 2.5Y
VG85	Datumvale Tatoo Nila	1L 2.6Y

#### J M & V LILLICO

VG85	Hindlee Royal Nipit 21100-CNF-DPF-BLF-PO	1L 2.4Y
------	--	---------

#### RADFORD BROS

EX-90-1E	Hawova Diamond Jodie-RED	4 Lact.
----------	--------------------------	---------

### East Gippsland Victoria

#### R JOHNSTON

EX-91-1E	Glomar Hotline Sarah 6200-MFF-CNF-DPF-XIF-BLF	4 Lact.
EX-91-3E	Glomar Mccutchen Anney 5506-CNF-DPF-BLF	6 Lact.
EX-90-1E	Glomar Supersire Lady 5435-ET	5 Lact.
EX-90-1E	Glomar Supersire Lucky 5430-ET	7 Lact.
VG85	Glomar Bold Lucky 6917-ET-CNF-DPF-BLF	1L 2.9Y
VG85	Glomar Bold Lucky 6918-ET-CNF-DPF-BLF	1L 2.9Y
VG85	Glomar Tatoo Sarah 6875-ET-CNF-DPF-BLF	1L 2.10Y

#### AMY STRINGER

EX-90-1E	Windy View Bradnick Heidi	4 Lact.
----------	---------------------------	---------

### North-Eastern Victoria

#### ADLEJAMA HOLSTEINS

VG85	Adlejama Cfp Tanya 3701-PC-CNF-DPF-BLF	1L 2.6Y
VG85	Adlejama Semino Janea 3625-CNF-DPF-BLF	1L 2.10Y

**PRICE HILL PTY LTD**

EX-90-1E Bluff Glen Wilpower Ella 2533 6 Lact.

**North-Western Victoria****CLYDEBANK HOLSTEINS**

EX-90-1E Clydebank Dempsey April 4 Lact.  
 EX-90-1E Clydebank Glauco Rosebeta 5 Lact.  
 EX-90-1E Clydebank Stanley Cup Marla 6 Lact.  
 EX-90-1E Clydebank Unix Melody 3 Lact.  
 EX-90-1E Clydebank Uno Gailor 4 Lact.  
 EX-90-4E Clydebank Sailing Whitney 7 Lact.  
 EX-90-2E Clydebank Loaded Caroline 5 Lact.  
 VG85 Clydebank America Rosebeet 1L 2.5Y  
 VG85 Clydebank Ledame Genoa 1L 2.10Y

**CLYDEVALE HOLSTEINS PTY LTD ATF DEE****FAMILY TRUST**

EX-95-4E Hullabaloo Bolton Sundae 7282-ET-CNF-DPF-BLF 6 Lact.  
 EX-93-3E Clydevale Sampson Shampoo 5 Lact.  
 EX-92-6E Clydevale Million Paradise-ET 9 Lact.  
 EX-92-3E Clydevale Beau Patron 9 Lact.  
 EX-90-1E Clydevale Chief Fizzig 3 Lact.  
 EX-90-1E Clydevale Merlot Pinot 5 Lact.  
 EX-90-1E Clydevale Piston Pita 4 Lact.  
 EX-90-1E Clydevale Pragna Gabrielle 8 Lact.  
 EX-90-1E Clydevale Sundance Fantasia 4 Lact.  
 EX-90-4E Clydevale Pragna Icecream 8 Lact.  
 EX-90-3E Clydevale Brobie Player 6 Lact.  
 EX-90-2E Beltana Mainstreet Rose-BR 5 Lact.  
 EX-90-2E Beltana Tiger Rhonda 5 Lact.  
 EX-90-2E Clydevale Sampson Ilka 5 Lact.  
 EX-90-2E Clydevale Solomon Foxy-ET-CNF-DPF-XIF-BLF 4 Lact.  
 VG86 Clydevale Lance Saphira 1L 2.8Y  
 VG85 Clydevale Cfp Postage-PO 1L 2.4Y  
 VG85 Clydevale Radio Faith 1L 2.6Y  
 VG85 Clydevale Sidekick Playmate 1L 2.8Y

**ELMAR HOLSTEINS**

EX-92-1E Calivil Park Goodwhone Duchess 4 Lact.  
 EX-91-1E Elmar Pety Josephine 2 6 Lact.  
 EX-91-4E Warrabell LauthORITY Lizzy-ET 8 Lact.  
 EX-90-1E Elmar Berlu Essie 5 Lact.  
 EX-90-1E Elmar Dempsey Jessica 2 6 Lact.  
 EX-90-1E Elmar Gotten Farlex 6 Lact.  
 EX-90-1E Elmar Mccutchen Josephine 7 Lact.  
 EX-90-1E Elmar Monterey Jessica 11-ET 6 Lact.  
 EX-90-1E Elmar Pety Farlex 6 Lact.  
 VG85 Elmar Chief Josephine 4787 1L 2.6Y  
 VG85 Elmar Sidekick Josephine 4755 1L 2.7Y

**ELMAR HOLSTEINS & R J & L E BLACKBURN**

VG85 Elmar Sidekick Lulu 4920-ET-CNF-DPF-BLF 1L 1.11Y

**ELMAR HOLSTEINS & LYNDSEY HEATH &****MITCHELL FLEMING**

EX-90-1E Elmar Rambo Jessica 4222-ET-CNF-DPF-BLF 3 Lact.

**ANGUS FRASER**

EX-92-1E Loudon Hill Dempsey Dixie 2 6 Lact.

**T D & K J GILMORE**

EX-91-1E Ingolmore Okaffeine Lisa 4 Lact.

**GLYNYARI HOLSTEINS**

EX-90-1E Glynyari Ashlift Whynot 5 Lact.  
 EX-90-1E Glynyari Beemette Whynot 3 Lact.  
 EX-90-1E Glynyari Goldsun Whynot-ET 8 Lact.  
 EX-90-3E Banksia Vale Bolton Bubbles-TWIN 11 Lact.  
 EX-90-2E Bruro Hoginjack Judith 9 Lact.  
 VG85 Glynyari Belkick Bubbles 1L 2.5Y  
 VG85 Glynyari Mchillix Bubbles 1L 2.8Y  
 VG85 Glynyari Select Superb 1L 2.9Y  
 VG85 Glynyari Sidekick Hailey 1L 2.6Y

**C B & K E GORDON**

EX-91-2E Gorgala Crush Rose-CNF-DPF-BLF 4 Lact.  
 EX-90-1E Gorgala Aftercrush Charcoal 3 Lact.  
 EX-90-1E Gorgala Bradey Shimmer-CNF-DPF-BLF 5 Lact.  
 EX-90-1E Gorgala Chill Josie 3 Lact.  
 EX-90-1E Gorgala Medallion Ruby 5 Lact.  
 EX-90-3E Gorbto Stanley Cup Roxmary 6 Lact.  
 VG85 Gorgala 1st Chief Supreme 1L 2.3Y  
 VG85 Gorgala Arrow Jessica 1L 2.4Y  
 VG85 Gorgala Deltalambda Thea 1L 2.8Y

VG85 Gorgala Docuno Roxmary 1L 2.0Y  
 VG85 Gorgala Kassarand Berlin 1L 2.3Y  
 VG85 Gorgala Sidekick Spot 1L 2.2Y  
 VG85 Gorgala Sidekick Supreme 1L 2.0Y  
 VG85 Gorgala Twister Hazel 1L 2.7Y  
 VG85 Gorgala Twister Midgee 1L 2.3Y  
 VG85 Gorgala Unstopabul Tiffany 865-ET-CNF-DPF-BLF 1L 2.4Y

**R K & J R GORDON**

VG85 Gorbto Arrow Maida 1L 2.10Y  
 VG85 Gorbto Arrowarch Tiffany 1L 2.8Y

**BEN GOVETT**

EX-92-4E Foxdale Reginald Peggy-CNF-DPF-BLF 8 Lact.  
 EX-90-1E Murrubrook Diamond Candace-ET 4 Lact.  
 EX-90-1E Tandara Crush Mae-ET 4 Lact.  
 EX-90-1E Tandara Crush Pollyanna 10 4 Lact.  
 EX-90-2E Tandara Multiple Heather 14-ET 4 Lact.  
 EX-90-2E Tandara Unknown Heather 18-ET 4 Lact.  
 VG85 Elmar Chief Jessica 4773-ET-CNF-DPF-BLF 1L 2.7Y

**ROBERT L GUNDRY**

EX-90-1E Gunwilla Park Della Caliba 6 Lact.  
 EX-90-3E Gunwilla Park Fever Maree 6 Lact.  
 VG85 Gunwilla Park Luster Jamie 1L 2.8Y  
 VG85 Gunwilla Park Randell Radio 1L 2.4Y

**K B CASH FAMILY TRUST**

EX-91-1E Rockstar Pg Undenied Cassy-ET 3 Lact.  
 EX-90-1E Murrubrook Doorman Penny-ET 4 Lact.  
 EX-90-2E Haven View Awesome R Portrait-ET 4 Lact.

**CRAIG A LISTER**

EX-90-1E Calister Mae Lady 6664 7 Lact.

**T, K, C & T MCGILLIVRAY**

EX-90-2E Bluechip Nonis Atwood-ET 5 Lact.  
 VG85 Killara Radio Ally 3182 1L 2.7Y  
 VG85 Killara Radio Tiffany 3179 1L 2.7Y

**MITCH HOLSTEINS**

EX-93-4E Mitch Aftershock Irene-CNF-DPF-BLF 6 Lact.  
 EX-90-3E Mitch Goldenboy Fairyfloss 9 Lact.  
 VG85 Mitch Altitude Cheeky-IMP-ET-RED-CNF-DPF-BLF 1L 2.9Y  
 VG85 Mitch Riverdown Irene-TWIN 1L 2.9Y  
 VG85 Tpm Legs Alicia Chief 1L 2.9Y

**MITCHMANTLE HOLSTEINS**

EX-91-1E Ingoldale Ok Mandy 6 Lact.  
 EX-90-1E Mitchmantle Defiant Gem-RED 6 Lact.  
 EX-90-2E Ingolmore Clark Index 7 Lact.  
 VG85 Eclipspeirc Mirand Silver 9523-ET-PO 1L 3.8Y

**JADE & SCOTT SIEBEN**

EX-90-1E Dellym Defiant Goldy-IMP-ET 6 Lact.

**B E & J N SOMERVILLE**

EX-91-2E Holloddon Legacy Corrine 2422 6 Lact.  
 EX-90-1E Melaleuca Impression Rosebud 3 Lact.  
 EX-90-1E Melaleuca Sidekick Lautelma-IMP-ET-CNF-DPF-BLF 3 Lact.  
 EX-90-2E Clydebank Stanley Cup Gleam 7 Lact.  
 VG85 Melaleuca Boom Odella 1L 2.6Y  
 VG85 Melaleuca Boom Quality 1L 2.7Y  
 VG85 Melaleuca Ledame Jane 1L 2.8Y

**T & M SOMERVILLE**

EX-90-1E True Blue Absolute Jode 4 Lact.  
 EX-90-3E True Blue Damion Jodie-ET 6 Lact.  
 VG85 True Blue America Scarlet-RED 1L 2.6Y

**BRADLEY & LEESA WINDRIDGE**

EX-92-1E Windy Ridge Aftershock Baw Baw 6 Lact.  
 EX-92-4E Windy Ridge Damion Larsie 7 Lact.  
 EX-92-2E Windy Ridge Laddawesome Redraspberries-ET 5 Lact.  
 EX-91-3E Windy Ridge Atwood Josephine 6 Lact.  
 EX-90-1E Windy Ridge Aftershock Jem 6 Lact.  
 EX-90-1E Windy Ridge Licorice Octane 3 Lact.  
 EX-90-2E Windy Ridge Doorman Kendra 7 Lact.  
 EX-90-2E Windy Ridge Solomon Kate 6 Lact.  
 VG86 Windy Ridge Radio Bliss 1L 2.7Y  
 VG85 Windy Ridge Mirand Lila Z-PO 1L 2.7Y

**R L & T L WISHART**

EX-91-1E Rowlands Park Solomon Mabel 4 Lact.  
 EX-90-1E Rowlands Park Chief Cinnamon-ET 3 Lact.  
 EX-90-1E Rowlands Park Crush Eve 4 Lact.  
 EX-90-1E Rowlands Park Silver 2235 3 Lact.  
 EX-90-4E Rowlands Park Mr Sam Lucky 9 Lact.

EX-90-3E Rowlands Park Bolt Lucky-ET 12 Lact.  
 EX-90-2E Rowlands Park Braxton Marion 6 Lact.  
 EX-90-2E Rowlands Park Crown Sasha-ET 7 Lact.  
 EX-90-2E Rowlands Park Goldsun Mabel-ET 6 Lact.  
 EX-90-2E Windy Vale After Bonnie-IMP-ET 7 Lact.  
 VG85 Rowlands Park Undenied Mabel 1L 2.3Y

**Northern Victoria****G B & M M ANDERSON**

EX-90-1E Windy Vale Awesome Ashlyn-ET-RED 5 Lact.  
 VG86 Sun Vale Jordy Destiny-RED 1L 2.2Y

**D E & S K CULTON**

EX-92-2E Calivil Park Tiller Elma 4 Lact.  
 EX-92-2E Calivil Park Val Fastnet 6 Lact.  
 EX-91-1E Calivil Park Cbsamite Ellie 3 Lact.  
 EX-91-1E Calivil Park Model Nugget 5 Lact.  
 EX-91-1E Calivil Park Supershot Valerie 3 Lact.  
 EX-91-1E Calivil Park Vampire Magpie 5 Lact.  
 EX-91-2E Calivil Park Gsun Lindy 6 Lact.  
 EX-90-1E Calivil Park A Awesome Susie-RED 3 Lact.  
 EX-90-1E Calivil Park B52 Colleen 3 Lact.  
 EX-90-1E Calivil Park Golden Dreams Heather 6 Lact.  
 EX-90-1E Calivil Park Goldy Delight 8 Lact.  
 EX-90-1E Calivil Park LauthORITY Ellie 2nd-ET 7 Lact.  
 EX-90-1E Calivil Park Lexicon Lindy 6 Lact.  
 EX-90-1E Calivil Park Rocky Fastnet 4 Lact.  
 EX-90-1E Calivil Park Tiller Kathy 6 Lact.  
 EX-90-1E Calivil Park Tonka Ellie 6 Lact.  
 EX-90-1E Calivil Park Triplece Valerie 5 Lact.  
 EX-90-2E Calivil Park Lhero Ellie 10 Lact.  
 EX-90-2E Calivil Park Sidney Magpie-CNF-DPF-BLF 7 Lact.  
 EX-90-2E Calivil Park Tiller Magpie 6 Lact.  
 VG86 Calivil Park Skick Polly 1L 2.7Y

**J P CULTON**

VG85 Calivil Ridge Sidekick Tania 1L 2.9Y

**M L HARVEY**

EX-90-1E Gapsted Onslow Limousine 4 Lact.

**J M HISCOCK & SONS**

VG85 Bruro Crushabull Eligeney 1L 2.7Y

**RICHARD HULL**

VG86 Eclipse Mirand August II-PO 1L 2.8Y  
 VG86 Eclipse Nacash Princess 1L 2.8Y  
 VG85 Eclipse 9622 1L 2.9Y  
 VG85 Eclipse Jagger Imelda I-ET 1L 2.1Y  
 VG85 Eclipse Moovin A Princess-ET 1L 2.2Y

**SCOTT & PHILIPPA ROBINSON**

VG86 Eastview Back To Bonnie-ET 1L 2.6Y

**J & M SHANNON PASTORAL COMPANY PTY LTD**

EX-91-1E Willette Eudon Alison 7-ET-MFF-CNF-DPF-XIF-BLF 4 Lact.  
 EX-90-1E Tomargo Recluse Bradict Dee-ET 3 Lact.

**NATHAN J SMITH & D & N SMITH**

VG87 Hightop Kingdoc Vienna 1L 3.2Y

**SOMERELLE HOLSTEINS**

EX-91-4E Willette Redesign Alison 5 9 Lact.  
 EX-91-3E Grantley Reginald Biddy-CNF-DPF-BLF 7 Lact.  
 EX-90-1E Camlou Goldchip Aphrodite-IMP-ET 5 Lact.  
 EX-90-1E Somerelle Aftershock Class 6 Lact.  
 EX-90-1E Somerelle Aftershock Jacko 8 Lact.  
 EX-90-1E Somerelle Ss Eddy 8 Lact.  
 EX-90-2E Somerelle Aftershock Collette 6 Lact.  
 EX-90-2E Somerelle Bradnick Roxy-IMP-ET 6 Lact.  
 EX-90-2E Somerelle Goldenboy Lassin 9 Lact.  
 EX-90-2E Somerelle Tko Lassity 7 Lact.

**STRATHFIELD HOLSTEINS**

EX-91-2E Byrne Lea Edify Shamrock 5 Lact.  
 EX-90-1E Coomboona Diamondback Sateen-IMP-ET 4 Lact.  
 EX-90-1E Oakwood Chief Posey 17986-ET 4 Lact.  
 EX-90-2E Eagle Ridge Archrival Ad Polka 6 Lact.

**H J WILLIAMSON**

EX-91-4E Heritage Grove Circuit Marylou 7 Lact.

**West Gippsland Victoria****C & F BILLS**

EX-92-1E Hearts Ridge Kingdoc Wendy 3 Lact.  
 EX-90-1E Hearts Ridge Solomon Lautamie 4 Lact.





# CLASSIFICATION

VG85	Hearts Ridge Aristocrat Rene	1L 2.4Y
VG85	Hearts Ridge Boom Blackrose	1L 2.9Y
VG85	Hearts Ridge Kingdoc Posch 2nd	1L 2.5Y
VG85	Hearts Ridge Kingdoc Spot	1L 2.4Y

## CHARLOTTE BILLS

EX-90-3E	Budgerree Acme Jodes-ET-RED	6 Lact.
J H & C J GARDINER & LINSAND FARMS PTY LTD		
EX-91-2E	Avonlea Solomon Ella	4 Lact.

## J H & C J GARDINER & MAXMOUNT HOLSTEINS

EX-90-1E	Pooley Bridge Shottle Kay 201	3 Lact.
----------	-------------------------------	---------

## J H & C J GARDINER & MATTHEW AND NICOLA TEMPLETON

EX-93-3E	Avonlea Sanchez Alana-IMP-ET	5 Lact.
----------	------------------------------	---------

## JARRAH HOLSTEINS

EX-94-2E	Jarrah Guthrie Queen	5 Lact.
EX-91-1E	Jarrah Gold Baby 2	5 Lact.
EX-90-1E	Jarrah Dauntless Susan	5 Lact.
EX-90-1E	Jarrah Fever Susan 2	5 Lact.
EX-90-1E	Jarrah Rambo Merial	3 Lact.
VG86	Jarrah Kingdoc Francis 2	1L 3.4Y

## K J & J G LAWRENCE

VG85	Addingwood Tailor 5269-CNF-DPF-BLF	1L 2.4Y
------	------------------------------------	---------

## DYLAN MCDONALD

VG85	Mcdonald Amazon Bonnie	1L 2.4Y
------	------------------------	---------

## MUNDEN FARMS HOLSTEINS

EX-92-1E	Arrowstar Attorney Lee	5 Lact.
EX-91-1E	Dryfield Bradnick Shamlee	3 Lact.
EX-90-1E	Andes Lin Quality 2nd	5 Lact.
EX-90-3E	Tomargo Recluse Solomon Whynot	5 Lact.
EX-90-2E	Pooley Bridge Fever Blackrose 48	7 Lact.

## MATTHEW ROBERTSON

EX-93-4E	Redholme Braxton Dream	10 Lact.
EX-91-3E	Lightning Ridge Cmd C45 Sateen-IMP-ET-RED-PO8 Lact.	
EX-91-3E	Redholme Damion Paradise-ET	8 Lact.
EX-90-1E	Redholme Licorice Bib-RED	6 Lact.
EX-90-1E	Redholme Magnetism Rose-PO	4 Lact.
EX-90-3E	Avonlea Dj Sally	10 Lact.
VG85	Redholme Unstopabull Satin-RED	1L 3.6Y

## DECLAN L PATTEN

EX-90-1E	Murrubrook Diamond Vetta-ET	4 Lact.
----------	-----------------------------	---------

## TROY SMETHURST

EX-92-3E	Ryanna Sanchez Topsy-ET	10 Lact.
EX-92-2E	Smethurst Park Lavanguard Bubbles 4315-ET	8 Lact.
EX-90-1E	Blackn White Solomon Candice 3rd-ET	4 Lact.
EX-90-1E	Lockstock Kimball Scarlett-ET-RED-CNF-DPF-XIF-BLF 3 Lact.	
EX-90-1E	Windy Vale Lauthority Toni	5 Lact.
EX-90-2E	Cowarol Uno Regidawn	5 Lact.
EX-90-2E	Eclipse Highoctane Imelda-IMP-ET-CNF-DPF-BLF 5 Lact.	

## STARCREST HOLSTEINS

EX-90-1E	Starcrest Gold Marymay	6 Lact.
EX-90-1E	Starcrest Goldfarm Petal	7 Lact.
EX-90-1E	Starcrest Halogen Sally	5 Lact.
EX-90-1E	Starcrest Unofev Mary	4 Lact.
EX-90-2E	Starcrest Dorcy Opal	7 Lact.
EX-90-2E	Starcrest Monterey Marymay	5 Lact.

## WINAVIEW HOLSTEINS

EX-90-2E	Winaview Explode Waves-ET	7 Lact.
----------	---------------------------	---------

## South Gippsland Victoria

### W R & B G ANDERSON

EX-91-2E	Bundalong Superstar Miri 3613-IMP-ET-CNF-DPF-XIF-BLF	4 Lact.
EX-90-1E	Bundalong Bighit Ding 3761-PF-CNF-DPF-XIF-BLF 4 Lact.	

### D & C & R BERRYMAN

EX-92-6E	Netherwood Lauthority Lois	9 Lact.
EX-91-1E	Netherwood Doorman Delvine	7 Lact.
EX-90-1E	Netherwood Cody Oleander	6 Lact.
VG85	Netherwood Mirand Boron 3rd-PO	1L 2.9Y
VG85	Netherwood Mirand Mandy-PO	1L 2.9Y

### GAVIN BROAD

EX-91-3E	Jet Star Asterix Carly	6 Lact.
----------	------------------------	---------

### L G & L A & T C CALDER

EX-92-2E	Calderlea Fever B Tassalie	6 Lact.
EX-91-1E	Calderlea Lauthority Tina	5 Lact.

EX-91-3E	Calderlea Steady Starbright	6 Lact.
EX-91-3E	Calderlea Tyson Faith 2-CNF-DPF-BLF	7 Lact.
EX-91-2E	Calderlea Windbrook Missy-IMP-ET	6 Lact.
EX-90-1E	Calderlea Tyson Gracie 2	4 Lact.
EX-90-2E	Calderlea Goldwyn A Topsy 3-ET	6 Lact.
EX-90-2E	Calderlea Rover Nadia	6 Lact.
EX-90-2E	Calderlea Tyson Roxette	5 Lact.
VG85	Calderlea Mafia Jaunita	1L 3.5Y
VG85	Calderlea Mafia La Topsy	1L 4.4Y

### L G & L A & T C CALDER, R & H PERRETT & A J & S D MACKIE

EX-90-2E	Eclipse Solomon A Bailey-ET-CNF-DPF-BLF	4 Lact.
----------	---	---------

### CARISMA HOLSTEINS

EX-92-5E	Carisma Fever Cathy	8 Lact.
EX-91-1E	Carisma Jacot Paradise	3 Lact.
EX-90-1E	Cairnhill Windbrook Paradi	5 Lact.
VG85	Carisma Impression Cathy	1L 2.6Y

### CARISMA HOLSTEINS & CAIRNHILL

EX-93-4E	Carisma Demolish Victory	6 Lact.
----------	--------------------------	---------

### T J & J E CLARK

EX-90-1E	Harklajze Control Jaspa	3 Lact.
EX-90-4E	Harklajze Evasion Dusty	7 Lact.
EX-90-2E	Harklajze Reginald Hannay	7 Lact.
VG85	Harklajze Delta Lambda Maggie	1L 2.4Y
VG85	Harklajze Summerday Janet	1L 2.8Y

### DILEE HOLSTEINS

VG85	Dilee Lauti Ollie 549-CNF-DPF-BLF	1L 2.7Y
------	-----------------------------------	---------

### A J HARRISON

EX-94-7E	Krishlaye Lauthority Pippa-ET	10 Lact.
EX-92-3E	Krishlaye Presley Pollo	5 Lact.
EX-91-3E	Dombrae Glauco Megan-TWIN	7 Lact.
EX-91-3E	Krishlaye Zalgartis Marsha	7 Lact.
EX-91-2E	Krishlaye Windbrook Matini-ET	5 Lact.
EX-90-1E	Krishlaye Melvin Alida	6 Lact.
EX-90-5E	Eagle Ridge Goldsuns Tiffany	8 Lact.
EX-90-4E	Eagle Ridge Brokaw T Paula	6 Lact.
EX-90-2E	Krishlaye Lauthority Jada	5 Lact.

### JONES FAMILY

EX-91-3E	Murrubrook Brawler Lola-ET	6 Lact.
EX-91-3E	Sleepy Hollow Goldsun Anthea	7 Lact.
EX-90-1E	Belmont Reginald Sally	5 Lact.
EX-90-1E	Cypress Grove P89 Mark Lonley-RED	8 Lact.
EX-90-1E	Cypress Grove R146-OC	7 Lact.
EX-90-1E	Horizon Brokaw Loyal	5 Lact.
EX-90-1E	Windy View Bradnick Debbie	5 Lact.
EX-90-4E	Kemi-Kahe P47	8 Lact.
EX-90-3E	Cypress Grove R11 Guthrie Rosette-ET	6 Lact.
EX-90-2E	Murrubrook Dream Paloma-CNF-DPF-BLF	7 Lact.
VG85	Cypress Grove X199 Luster Wanda	1L 2.3Y
VG85	Cypress Grove X25 Chief Lucy	1L 2.8Y
VG85	Cypress Grove X258 Revere Daytona-RED-CNF-DPF-BLF	1L 2.3Y

### JONES FAMILY & JUSTIN STALEY

EX-90-1E	Paringa Destry Zikes-BR	9 Lact.
W B & F G & B A LOUGHRIDGE		
EX-92-1E	Tamscott Circuit 5204	8 Lact.
EX-91-1E	Tamscott Ernesto 5089	8 Lact.
EX-91-1E	Tamscott King Doc 6112	3 Lact.
EX-90-1E	Tamscott Jedi 5873	4 Lact.
EX-90-1E	Tamscott Leno 5697	5 Lact.
VG85	Tamscott Aristocrat 6692-CNF-DPF-BLF	1L 2.4Y
VG85	Tamscott Lambda 6804-CNF-DPF-BLF	1L 2.2Y

### HAYDEN & RACHEL NEED

EX-90-1E	Hazel Oaks Uno Rowena 2590	4 Lact.
EX-90-2E	Hazel Oaks Monterey Vaughan 2487	5 Lact.
VG85	Hazel Oaks Joppolo Vaughan 2943-PO	1L 2.4Y

### NERRENA HOLSTEINS

EX-90-1E	Hartwoud Fever Min	9 Lact.
----------	--------------------	---------

### R & H PERRETT

EX-90-1E	Hill Valley Commander G Achilli	3 Lact.
----------	---------------------------------	---------

### WAYNE PROSSER

EX-90-1E	Pro Way Unix Fancy	6 Lact.
----------	--------------------	---------

### JUSTIN STALEY

EX-91-1E	Town-View Carnival Charity	8 Lact.
EX-90-2E	Robley Park Epic Jessie	5 Lact.

### MATTHEW AND NICOLA TEMPLETON

EX-93-3E	View Fort Dictator Dottie	6 Lact.
EX-90-1E	Avonlea Kingdoc Mistress	3 Lact.
EX-90-2E	Pooley Bridge Gillespie Sadie 75	7 Lact.
EX-90-2E	View Fort Roble Sadie	4 Lact.
VG87	View Fort Lambda Butter	1L 2.2Y
VG85	View Fort Doc Rapahel	1L 2.9Y
VG85	View Fort Radio Posch	1L 2.8Y

### MATTHEW AND NICOLA TEMPLETON & LUKE GARDINER

VG87	View Fort Jagger Satin	1L 2.4Y
------	------------------------	---------

### WALKERBRAE AUSTRALIA

EX-93-4E	Walkerbrae Impression Donna	6 Lact.
EX-90-1E	Walkerbrae Callum Toni	4 Lact.
EX-90-1E	Walkerbrae Unix Zandra	5 Lact.

### WANDILLA PAST CO

EX-92	Wandilla Octane Trigger 11th (MALE)	7.3Y
EX-91-1E	Wandilla Osaka Spirit 2nd	6 Lact.
EX-90-1E	Wandilla Aftershock Beauty 122	7 Lact.
EX-90-1E	Wandilla Archival Emerald 85th	5 Lact.
EX-90-1E	Wandilla Dreams Royalty 99	4 Lact.
EX-90-1E	Wandilla Rocky Figni 75	7 Lact.
EX-90-1E	Wandilla Sirocco Tassalie 175th	5 Lact.
EX-90-1E	Wandilla Spur Tassalie 160	5 Lact.
EX-90-3E	Wandilla Bradnick Crinkle 67th	7 Lact.
EX-90-2E	Wandilla Dreams Lois 80th	6 Lact.
EX-90-2E	Wandilla Spur Helen 13th	5 Lact.
VG85	Wandilla Kingdoc Tassalie 221	1L 3.7Y
VG85	Wandilla Roble Beauty 230	1L 3.7Y

### WENDY WHELAN

EX-90-1E	Inlet Oasis Hoboliv 5015	10 Lact.
----------	--------------------------	----------

## Western District Victoria

### ALNOR PARTNERS

EX-91-2E	Alnor Prue Planet 6467	9 Lact.
EX-90-1E	Alnor Beth Doubledutch 6767	7 Lact.
EX-90-1E	Alnor Julie Vosac 5826	9 Lact.
EX-90-1E	Alnor Lynette Twist 7528	5 Lact.
EX-90-1E	Alnor Nancy Superpoll 7768-PO	5 Lact.
EX-90-3E	Alnor Gypsy Doubledutch 6814	8 Lact.
EX-90-3E	Alnor Teresa Regi 7187	7 Lact.
VG85	Alnor Bonnie Crisis P 8926-PO	1L 2.10Y

### ZAC ANDERSON

EX-90-4E	Amarula Acme Paradise	8 Lact.
----------	-----------------------	---------

### BRETT CIRILLO

EX-90-2E	Ambrewlea Adema Primrose	6 Lact.
----------	--------------------------	---------

### B J & J L DICKSON

EX-90-2E	Emu Banks Guthrie Jackie 8689	4 Lact.
VG85	Emu Banks Jeronimo Amorossi 12807-CNF-DPF-BLF 1L 2.3Y	
VG85	Emu Banks Torro Louanna 12786-ET-CNF-DPF-BLF 1L 2.3Y	

### T J & T M FLEMING

EX-92-5E	Craigburn Medallion Irish 3479	8 Lact.
EX-91-5E	Craigburn Magnetism Carolyn 3204	9 Lact.
EX-90-1E	Craigburn Brazzle Ann 3763	6 Lact.
EX-90-1E	Craigburn Foresight Mirrors 3262	10 Lact.
EX-90-1E	Craigburn Geography Melanie 4119	4 Lact.
EX-90-1E	Craigburn Reginald Wendy 3890	6 Lact.
EX-90-2E	Craigburn Brazzle Roxy 3687	6 Lact.
VG86	Craigburn Chief Essi 4538	1L 2.9Y
VG85	Craigburn Doc Gypsy 4496	1L 3.4Y
VG85	Craigburn Loth Wiggles 4554	1L 2.7Y
VG85	Craigburn Milano Opal 4606	1L 2.6Y
VG85	Craigburn Mirand Roxy 4570-PO	1L 2.7Y
VG85	Craigburn Perseus Wendy 4560	1L 2.7Y

### BRENTON J FLEMING

VG85	Pinebrook Drastic Anika-CNF-DPF-BLF	1L 2.8Y
------	-------------------------------------	---------

### G M & P E FLEMMING

EX-90-1E	Philmar Aftershock Fern 6064	5 Lact.
EX-90-1E	Philmar Fantasy Pauline 3779	8 Lact.
EX-90-1E	Philmar Guthrie Patsy 6025	5 Lact.
VG86	Philmar Chief Carol 6484-CNF-DPF-BLF	1L 2.7Y
VG85	Elmar Unix Jessica 4586-CNF-DPF-BLF	1L 3.4Y

### CHRIS & MARY GLEESON

EX-96-5E	Elm Banks Brook Misty	9 Lact.
EX-95-3E	Elm Banks Doorman Lulu	5 Lact.



EX-94-5E	Elm Banks Fortres Faithful	8 Lact.	VG85	Elm Banks Haniko Kiara	1L 2.6Y	<b>B E &amp; A B &amp; R B ROBERTSON</b>	
EX-93-5E	Elm Banks Fever Madeleine-ET-CNF-DPF-BLF	9 Lact.	VG85	Elm Banks Jag Peach	1L 2.3Y	EX-90-1E	Quality Ridge Crush Jane 4 Lact.
EX-93-3E	Eclipse Solomon Cinderella	5 Lact.	VG85	Elm Banks Jagger Atlee-ET	1L 2.3Y	EX-90-1E	Struan Baltimor Cuddles 6 Lact.
EX-93-3E	Elm Banks Mario Lass	6 Lact.	VG85	Elm Banks Jagger Gilly	1L 2.3Y	EX-90-1E	Struan Bradnick Carol 5 Lact.
EX-93-2E	Bluechip Black Rose-ET	4 Lact.	VG85	Elm Banks Jagger Wattle	1L 2.3Y	EX-90-1E	Struan Jordy Lynne-ET 4 Lact.
EX-93-2E	Elm Banks Bradnick Lassie	4 Lact.	VG85	Elm Banks Kingdoc Maddie	1L 2.11Y	EX-90-1E	Struan Mae Erin 2 6 Lact.
EX-92-1E	Elm Banks Solomon Lulu	4 Lact.	VG85	Elm Banks Kingdoc Pride	1L 2.11Y	EX-90-1E	Struan Saturn Whitehead 4 Lact.
EX-92-1E	Elm Banks Tattoo Maddie	3 Lact.	VG85	Elm Banks Lambda Lass	1L 2.10Y	EX-90-1E	Struan Solomon Chardony 4 Lact.
EX-92-4E	Elm Banks Acme Lucille	7 Lact.	VG85	Elm Banks Master Beyonce	1L 2.9Y	VG85	Gorbros Sideric Robin 1L 2.4Y
EX-92-4E	Elm Banks Dempsey Tassalie	8 Lact.	VG85	Elm Banks Master Donna	1L 2.9Y	<b>R W &amp; J SUARES</b>	
EX-92-2E	Elm Banks Crush Berry	4 Lact.	VG85	Elm Banks Master Tiffany-ET	1L 2.10Y	EX-91-1E	Calderbrae Trump Mandy 3 Lact.
EX-91-3E	Parrabel Atwood Okabargo-IMP-ET	6 Lact.	VG85	Elm Banks Master Tiffany-ET	1L 2.10Y	<b>WESTMUIR HOLSTEINS</b>	
EX-91-1E	Elm Banks Bradnick Annie	4 Lact.	VG85	Elm Banks Master Velvet	1L 2.9Y	EX-90-1E	Bluechip C Awesome Rose-ET 4 Lact.
EX-91-1E	Elm Banks Jeddy Gleam	4 Lact.	VG85	Elm Banks Mirand Deliah-PO	1L 2.2Y	EX-90-1E	Van Dijk Doc Cosmo li-ET 3 Lact.
EX-91-1E	Elm Banks Tattoo Peach	3 Lact.	VG85	Elm Banks Moovin Dina	1L 2.1Y	EX-90-1E	Westmuir Beemer Bright 5 Lact.
EX-91-5E	Elm Banks Bradnick Donna	7 Lact.	VG85	Elm Banks Nick Princess	1L 3.0Y	VG86	Westmuir Jagger Josie 1L 2.4Y
EX-91-5E	Elm Banks Dianne Shottle	8 Lact.	VG85	Elm Banks Pretty Girlie	1L 2.9Y	VG85	Westmuir Jagger Robina 1L 2.2Y
EX-91-4E	Elm Banks Brad Butterlass	7 Lact.	VG85	Elm Banks Sidekick Gilly	1L 2.2Y	<b>WHISKEY CREEK HOLSTEINS</b>	
EX-91-3E	Elm Banks Laddie Sunspot	6 Lact.	VG85	Elm Banks Sidekick Leetza	1L 2.10Y	EX-90-1E	Ebony Park Fever Toni 8 Lact.
EX-91-3E	Elm Banks Legendary Berry	6 Lact.	VG85	Elm Banks Sidekick Maggie	1L 2.4Y	<b>N &amp; M WILKIE</b>	
EX-91-3E	Fairvale Bradnick Josie 130	5 Lact.	<b>CHRIS &amp; MARY GLEESON &amp; ECLIPSE GENETICS</b>		EX-92-2E	Warramont Diamondback Fondue-ET 4 Lact.	
EX-91-2E	Elm Banks Brad Lulu	4 Lact.	EX-90-1E	Elm Banks Bradnick Rose-ET 3 Lact.	<b>Northern WA</b>		
EX-91-2E	Elm Banks Dolly Polly-ET-CNF-DPF-BLF	6 Lact.	EX-90-1E	Elm Banks Chief Princess 3 Lact.	<b>ANGI BROS</b>		
EX-91-2E	Elm Banks Shot Peach	7 Lact.	<b>CHRIS &amp; MARY GLEESON &amp; SCOTT &amp; PHILIPPA ROBINSON</b>		EX-94-4E	Angelis Spottie Devoted 920 10 Lact.	
EX-91-2E	Elm Banks Tatoo Gilly	4 Lact.	VG86	Elm Banks Moovin Lulu 1L 2.6Y	EX-92-1E	Angelis Apple Bluey 813 4 Lact.	
EX-91-2E	Taroon Park Goldchip 3586	5 Lact.	<b>B F &amp; G P &amp; J HAND</b>		EX-91-1E	Angelis Buddha Bluey 770 4 Lact.	
EX-90-1E	Elm Banks Beemer Magic	3 Lact.	EX-92-4E	Eclipse Contender August-IMP-ET-RED 7 Lact.	EX-91-3E	Angelis Blackrose Ladylike 344 13 Lact.	
EX-90-1E	Elm Banks Brad Princess	5 Lact.	<b>INSTYLE HOLSTEINS</b>		EX-90-1E	Angelis Apple Bertha 446-RED 6 Lact.	
EX-90-1E	Elm Banks Chief Ballet	3 Lact.	EX-93-2E	Instyle Solomon Dahlia 4 Lact.	EX-90-1E	Angelis Apple Bluey 740-OC 5 Lact.	
EX-90-1E	Elm Banks Diamond Lulu	3 Lact.	EX-90-1E	Instyle Diamond Tilly 3 Lact.	EX-90-1E	Angelis Apple Joy 701-RED 6 Lact.	
EX-90-1E	Elm Banks Impress Duchess	3 Lact.	VG86	Instyle Doc Auromie-ET 1L 2.5Y	EX-90-1E	Angelis Connie Bluey 541 6 Lact.	
EX-90-1E	Elm Banks Jacoby Elegance	3 Lact.	VG86	Instyle Master Sugar 1L 2.9Y	EX-90-1E	Angelis Mascalse Alice 490 7 Lact.	
EX-90-1E	Elm Banks Jacoby Night	3 Lact.	VG85	Instyle Doc Edith 1L 2.4Y	EX-90-1E	Angelis Shottle Bertha 347 8 Lact.	
EX-90-1E	Elm Banks Jacoby Primrose	3 Lact.	VG85	Instyle Doc Susa 1L 2.4Y	EX-90-1E	Angelis Shottle Bluey 537 6 Lact.	
EX-90-1E	Elm Banks Jordy Red Lynley-ET-CNF-DPF-BLF	4 Lact.	VG85	Instyle Tatoo Perfection 2 1L 2.7Y	EX-90-1E	Angelis Shottle Connie 642 6 Lact.	
EX-90-1E	Elm Banks Kool Lynley	3 Lact.	<b>J H &amp; N J JENNINGS</b>		EX-90-1E	Angelis Shottle Silky 363 8 Lact.	
EX-90-1E	Elm Banks Mirand Sky-PO	3 Lact.	EX-90-1E	Chapple Valley Lavanguard Suzanne 1678 7 Lact.	EX-90-2E	Angelis Apples Raybe 549-RED 8 Lact.	
EX-90-1E	Elm Banks Paradise Sky	6 Lact.	EX-90-1E	Chapple Valley Solomon Grendal-IMP-ET 3 Lact.	VG85	Angelis Advance Rhonda 1320-RED 1L 3.11Y	
EX-90-1E	Elm Banks Tatoo Ambrosia	3 Lact.	EX-90-2E	Chapple Valley Sympatico Letta 1811 6 Lact.	VG85	Angelis Rubels Apple 1580-RED 1L 2.6Y	
EX-90-4E	Elm Banks Golden Girl	7 Lact.	<b>J W JENNINGS</b>		<b>BROSELINDA PARK</b>		
EX-90-3E	Elm Banks Bradnick Maggie	6 Lact.	EX-90-2E	Rusty Red Absolute Georgia-RED 6 Lact.	EX-90-2E	Acero Shottle Ruby 10 Lact.	
EX-90-3E	Elm Banks Bradnickinterest	6 Lact.	<b>J W JENNINGS &amp; INSTYLE HOLSTEINS</b>		VG85	Broselinda Park Mirand Lilibet Bp22-PO 1L 2.3Y	
EX-90-3E	Elm Banks Loaded Lass	6 Lact.	EX-91-2E	Lightning Ridge Cmd Dback Barbara-ET-RED 4 Lact.	<b>D M &amp; L M FRY</b>		
EX-90-2E	Eagle Ridge Elijah Paula	5 Lact.	<b>JONATHON JENNINGS</b>		EX-92-1E	Katandra Park Solomon Bonnie 3 Lact.	
EX-90-2E	Eastview Aftershock Bonnie	6 Lact.	EX-90-1E	Avonlea Brady Allie-IMP-ET 4 Lact.	EX-91-3E	Katandra Park Stonewall Deb 7 Lact.	
EX-90-2E	Elm Banks Brad Lassie	6 Lact.	VG85	Wigley 2322 Luster Toni 1L 3.3Y	EX-90-1E	Katandra Park Kennedy Marie 3 Lact.	
EX-90-2E	Elm Banks Pit Jodie-ET-RED	6 Lact.	<b>JONATHON JENNINGS, BEN GOVETT &amp; DANIEL W BACON</b>		VG85	Katandra Park Bt Sidekick Candace-ET 1L 2.8Y	
EX-90-2E	Elm Banks Polly Anna-ET-CNF-DPF-BLF	6 Lact.	EX-90-1E	Rusty Red Atwood Apple 4 Lact.	VG85	Katandra Park Chief Mel 1L 2.8Y	
EX-90-2E	Elm Banks Regan Daphne	4 Lact.	<b>LINSAND FARMS PTY LTD</b>		<b>G R &amp; C Z MANNING</b>		
VG87	Elm Banks Chief Beyonce	1L 2.6Y	VG85	Linsand Mogul Hollie 1L 2.9Y	EX-92-1E	Shade River Chase Beryl 6080 5 Lact.	
VG87	Elm Banks Chief Mistress	1L 2.7Y	<b>LINSAND FARMS PTY LTD &amp; B A, K A &amp; M J GOSS</b>		<b>Southern WA</b>		
VG86	Elm Banks Bradnick Peach	1L 2.8Y	VG85	Linsand Octane Tara 1L 2.3Y	<b>G A &amp; L E JENKINS</b>		
VG86	Elm Banks Chief Anna 5949	1L 2.4Y	<b>B &amp; Y MCVILLY</b>		EX-92-5E	Treeton Iota Cherry 7 Lact.	
VG86	Elm Banks Chief Apple	1L 2.9Y	EX-93-5E	Fairvale Dempsey Posch 3 8 Lact.	EX-90-1E	Treeton Supersire Joy 6 Lact.	
VG86	Elm Banks Chief Berry	1L 2.4Y	EX-90-1E	Kearla Absolute Supra-IMP-ET-RED 5 Lact.	EX-90-1E	Treeton Supersire Marigold 6 Lact.	
VG86	Elm Banks Doctor Lulu	1L 2.7Y	EX-90-1E	Windy View Bradnick Barbara 4 Lact.	EX-90-2E	Treeton Impression Ivory 7 Lact.	
VG86	Elm Banks Jagger Lulu	1L 2.3Y	EX-90-1E	Windy View Shottle Maggie 6 Lact.	VG85	Treeton Macnut Marigold-CNF-DPF-BLF-PO 1L 2.7Y	
VG86	Elm Banks Jagger Velvet	1L 2.3Y	EX-90-1E	Windy View Undenied Lilly-ET 3 Lact.	<b>KITCHEN FARMS</b>		
VG86	Elm Banks Kingdoc Jossie	1L 3.3Y	EX-90-4E	Windy View Goldendreams Barbara 7 Lact.	EX-91-1E	Carenda Jacey Funky 6 Lact.	
VG86	Elm Banks Master Silk	1L 2.10Y	VG86	Windy View Mpl Rdg Chief Lilly 1L 2.4Y	EX-91-1E	Carenda Montana Vista-MFF-CNF-DPF-XIF-BLF 5 Lact.	
VG86	Elm Banks Mirand Primrosette-PO	1L 2.6Y	VG85	Windy View Chief Elegance 1L 2.7Y	EX-90-3E	Carenda Mainevent Vanda 5 Lact.	
VG86	Elm Banks Moovin Candace 1-ET	1L 2.4Y	VG85	Windy View Durham Elegance 1L 2.1Y	EX-90-2E	Carenda Mainevent Verbena 6 Lact.	
VG86	Elm Banks Moovin Tiffany	1L 3.1Y	VG85	Windy View Mpl Rdg Talent Paradise 1L 3.1Y	VG85	Carenda River Summer-CNF-DPF-BLF 1L 2.10Y	
VG86	Elm Banks Princess Harmony	1L 2.8Y	<b>P &amp; M KERR FARMING PTY LTD</b>		<b>R B &amp; H MOUNTFORD</b>		
VG86	Elm Banks Randy Wattle-PO	1L 2.11Y	VG85	Rookery King Doc Whiskers 1498 1L 2.4Y	EX-91-3E	Brampton Park Wp Gaye 5 Lact.	
VG86	Elm Banks Sidekick Lady 5952	1L 2.4Y	<b>EUGENE REA</b>		EX-90-1E	Brampton Park Bn Mitzie 4 Lact.	
VG86	Elm Banks Sidekick Odessa	1L 2.3Y	EX-93-4E	Childers Cove Meridian Mia 8 Lact.	VG85	Brampton Park Lx Gaye 1L 2.7Y	
VG86	Elm Banks Sidekick Skye	1L 2.3Y	EX-90-1E	Childers Cove Armani Australis-ET-RDC 6 Lact.	VG85	Brampton Park Mr Bessie-PO 1L 2.8Y	
VG86	Elm Banks Solo Elegance	1L 2.10Y	EX-90-1E	Childers Cove Dempsey Licorice-ET 6 Lact.	VG85	Brampton Park Op Pansy 1L 2.9Y	
VG86	Elm Banks Stantons Sky	1L 2.2Y	EX-90-1E	Childers Cove Jacot Radiant-RED 4 Lact.	<b>V R RODWELL</b>		
VG86	Elm Banks Stop Dolly	1L 2.10Y	EX-90-1E	Childers Cove Mogul Blaze 8 Lact.	EX-90-2E	Acero Xraeted-ET 9 Lact.	
VG85	Elm Banks America Alanna	1L 2.6Y	VG86	Childers Cove Mogul Blaze 8 Lact.			
VG85	Elm Banks America Tiffany	1L 2.2Y	VG85	Childers Cove Lambda Belle 1L 2.9Y			
VG85	Elm Banks Beemer Lynley	1L 2.3Y	VG85	Childers Cove Kingdoc Atlanta 1L 2.5Y			
VG85	Elm Banks Bradnick Lice	1L 2.6Y					
VG85	Elm Banks Bradnick Melody	1L 2.11Y					
VG85	Elm Banks Doc Elegance	1L 2.5Y					



# Well-travelled Holsteins

**F**inding the right buyer for your cows is never easy – especially when your dairy farm is in one of the most geographically isolated regions in the country.

But for Western Australian Master Breeders, Jacqui and Bob Biddulph of Leeuwin Holsteins, the culmination of decades of Holstein registrations and AI breeding has paid off, with 169 of their cows finding a new home on the other side of the continent with Brendan and Sarah Glass (Amburla Holsteins), at Gundowring in Victoria’s north east.

Jacqui said the ability to attract a buyer, and their willingness to transport the cows across the Nullarbor, reflected the value of breeding registered cattle with a solid genetic profile.

“The value of the registration, the genomics, the herd recording, and the up-to-date classification has contributed significantly to the buyer having confidence in our cattle,” she said.

The cows were transported in three batches – with the first arriving in Victoria on 27 January. Each trip involved five days and 3,600 km, stopping every 1,000 km to unload, rest, feed and water the cows.

The Leeuwin cows will form the base of a new herd for the Glass family, to be managed on their second dairy, on a newly leased property, not far from their existing 400 cow farm at the Kiewa Valley in Victoria’s Alpine region.



The first truck arriving at Amburla Holsteins.

Having bought the cows sight-unseen on the recommendation of his livestock agent, Brendan said he was happy with how quickly they adjusted to their new environment.

“When they arrived, they just walked off the truck and went straight down the paddock and started grazing,” he said.

“They’ve got a bit of middle to them and are set a little smaller than our cows – but they have neat udders and will suit the hills and the grazing system on our second farm.”

He said the first of the cows have begun calving, and he is glad he took the risk.

“Buying from a Master Breeder herd – I was confident they would be a good sound group of cows that would work well for us,” he said.

“Even after you add in the transport costs, it would have been hard to find cows of this quality if we were buying locally.”

The Biddulphs were equally delighted with the sale, with Jacqui saying she was keen to follow the progression of her cows within the Amburla herd.

“It will be exciting to see how good Holstein genetics can perform under different farming systems – even if it is on the other side of the country.”



The Leeuwin cows relaxing in their new home in north-east Victoria.

## Advertisers’ index

ABS.....	2
AgriGene.....	4 & 19
Genetics Australia.....	37
HA Competition dead lines.....	8
NZ Holsteins.....	15
Semex.....	48
ST Genetics.....	7
Verified Holsteins.....	33
WWS.....	47

## HOLSTEIN JOURNAL ADVERTISING

### Advertising enquiries:

phone Amanda Glossop on 0409 926 429 or email [aglossop@holstein.com.au](mailto:aglossop@holstein.com.au)

### Editorial enquiries:

phone Lee-Ann Monks on 0419 349 244, or e-mail [lmonks@monkscom.com.au](mailto:lmonks@monkscom.com.au)

### Deadlines: Winter 2024 issue

Advertising bookings: Wednesday 17 April

Advertising material (copy for layout): Wednesday 17 April

Advertising material (finished artwork): Wednesday 24 April

Editorial contributions: Wednesday 17 April

(e-mailed to [lmonks@monkscom.com.au](mailto:lmonks@monkscom.com.au) or phone 0419 349 244)



These brothers come from the EX-92 Doc dam that traces back to Queen of the Breed Glenridge Citation Roxy EX-97 via famous brood cows Gloryland Goldwyn Locket EX-94, Gloryland Lana Rae EX-94, Hanoverhill Tony Rae EX-96 and Hanoverhill TT Roxette EX-94.

These brothers will breed balanced cows with great strength and width throughout and deep and wide rib structure. Look for high quality mammary systems with particularly high and wide rear udders – all without compromising on production and health traits.

# LEGENDAIRY

7HO16491 TOWNLINEACRE LEGENDAIRY-ET  
HOMECOMING X DOC X DOORMAN



**TYPE** +3.41 PTAT | SLOPED RUMPS  
**UDDERS** +2.62 UDC | GOOD TEAT LENGTH  
**FERTILITY AND CALVING EASE** +0.6 DPR | 2.5 SCE  
**POWER** +2.20 STRENGTH | +2.87 DEPTH | +2.99 OPEN RIBBED

# LOMBARDI

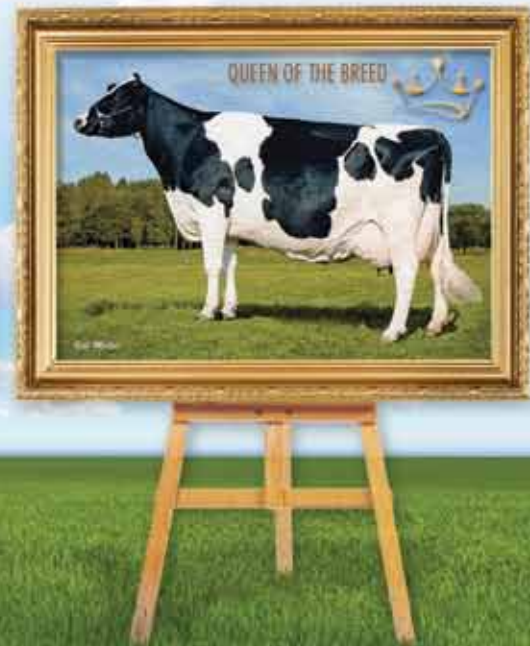
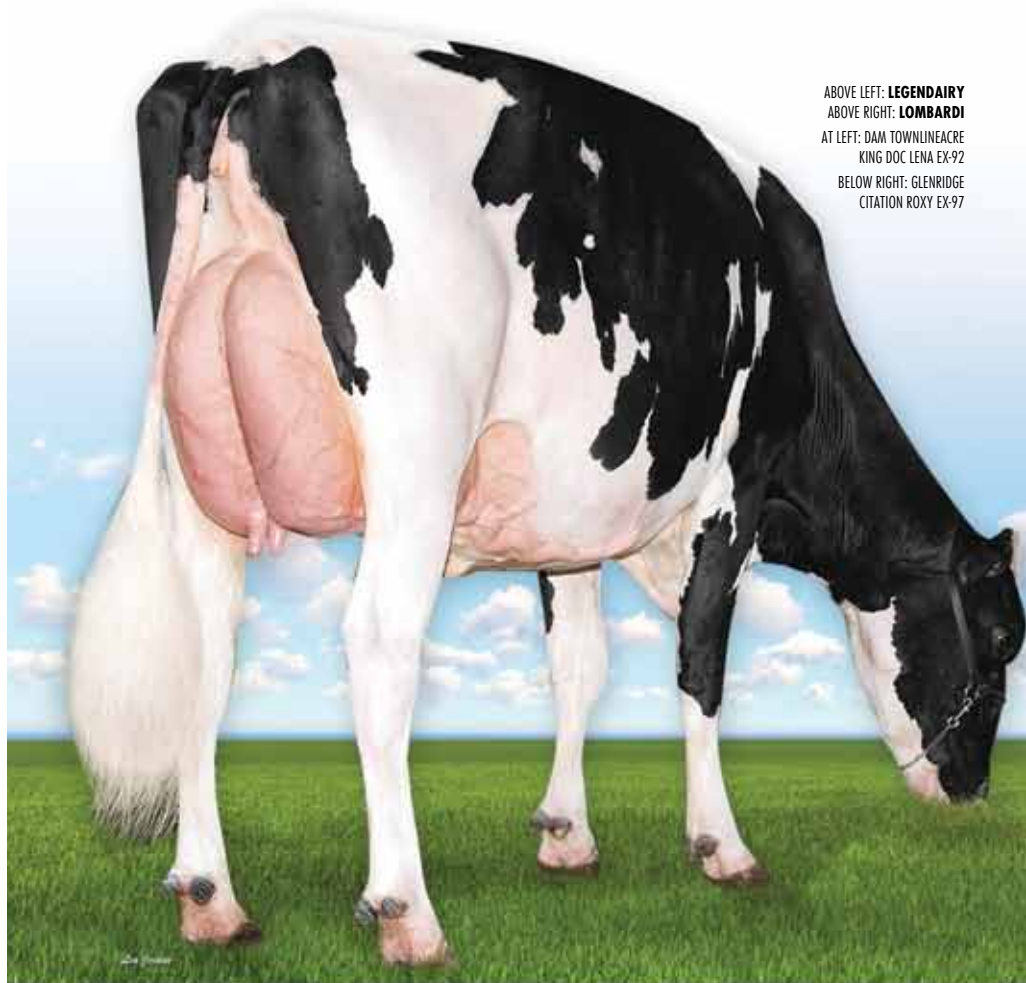
250HO16490 TOWNLINEACRE DL LOMBARDI-ET  
DELTA-LAMBDA X DOC X DOORMAN



**TYPE** +3.52 PTAT | +3.14 UDC  
**UDDERS** +4.50 RUH | +4.63 RUW  
**FUNCTIONAL** SLOPED RUMPS | LOW SOMATIC CELL  
**PRODUCTION** ADDS MILK AND COMPONENTS

# PEDIGREE, PERFORMANCE AND POWER

ABOVE LEFT: LEGENDAIRY  
ABOVE RIGHT: LOMBARDI  
AT LEFT: DAM TOWNLINEACRE  
KING DOC LENA EX-92  
BELOW RIGHT: GLENRIDGE  
CITATION ROXY EX-97



HERE FOR YOU.

## WORLD WIDE SIRES

Phone (03) 5831 5559 • info@wwsaustralia.com

[wwsaustralia.com](http://wwsaustralia.com)



<sup>g</sup>Force and <sup>g</sup>gender SELECTED are trademarks of Select Sires Inc. 12/23 CDCB and HA data. 7HO16491 Rel. Type 79%, Rel. DPR 75%, Rel. SCE 63%; 250HO16490 Rel. Type 80%.

# Product of the USA



# GENERATION AFTER GENERATION

*We Are Genetics For Life*

## DUCKETT HABIT



0200H012805

HOLYSMOKES x DOC x JEDI

**+2931** GTPI

**+89** Fat lbs **+0.19** Fat%

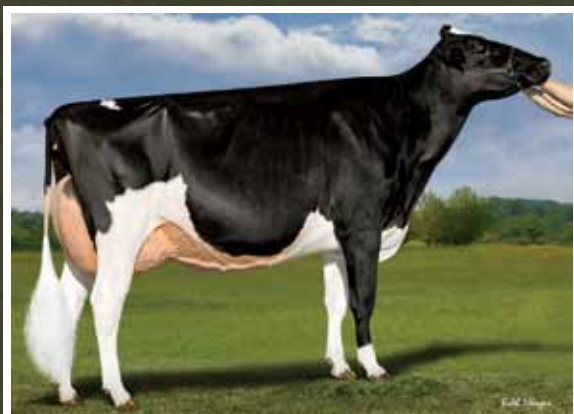
**+2.14** PTAT **+2.11** Udder Composite

**+0.6** Daughter Pregnancy Rate

SOURCE: CDCB-G & HAUSA-G / 12-23



*Holly McFarlane*



0200H012805 Duckett Habit is a much anticipated son from the record-breaking S-S-I Doc Have Not 8784 EX- 96-USA. He's an A2A2, 0200H012222 Holysmokes son available at +2.14 PTAT with +2.11 UDC, siring strength, quality mammary systems from a deep pedigree tracing back to EX-95-2E GMD DOM 5\* Dellia herself.

Dam: S-S-I DOC HAVE NOT 8784 EX-96-5YR-USA



[www.semex.com.au](http://www.semex.com.au)

